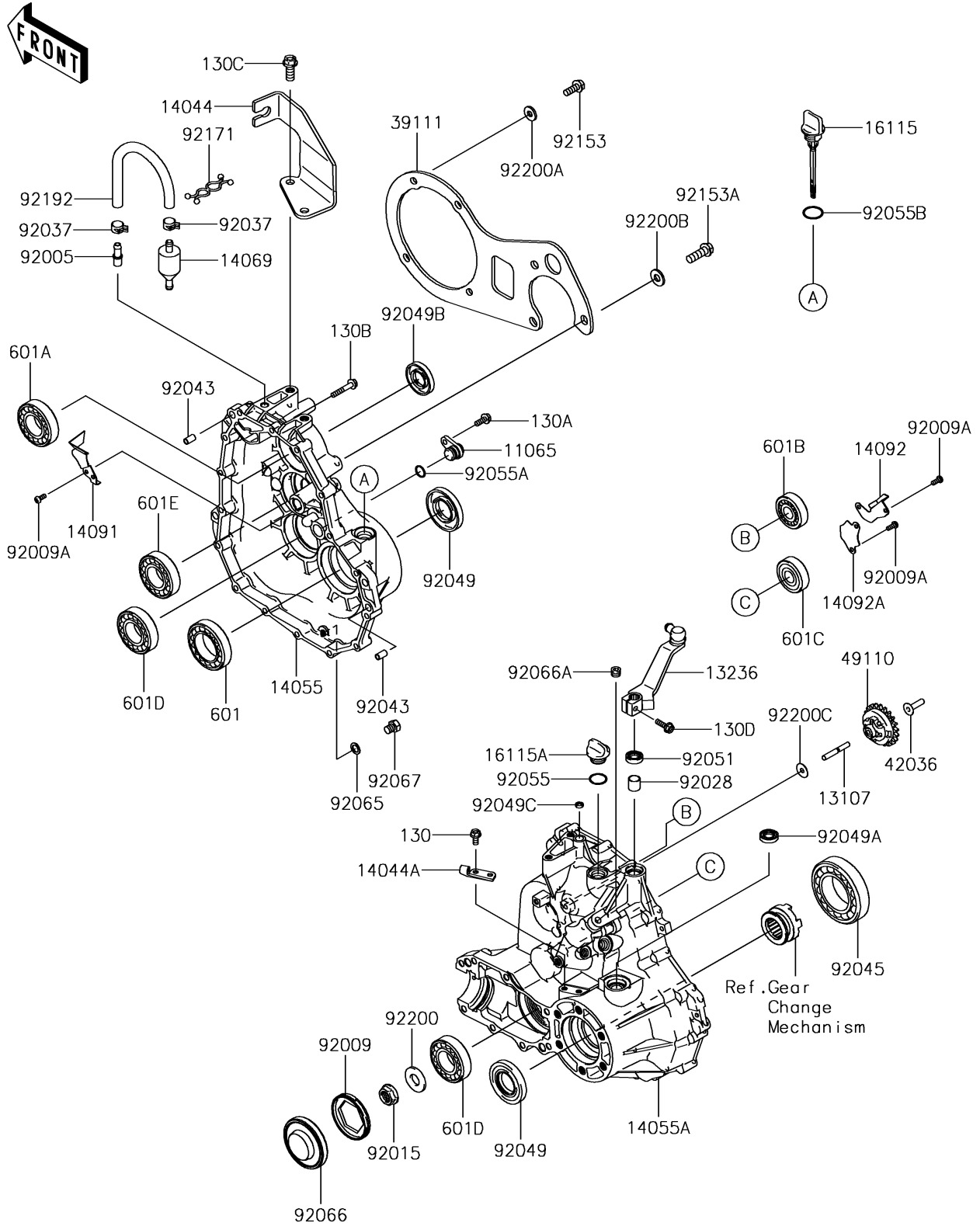


2018 MULE SX™ PARTS DIAGRAM

Gear Box

E1450



2018 MULE SX™ PARTS LIST

Gear Box

ITEM NAME	PART NUMBER	QUANTITY
CAP,GEAR CASE,RH (Ref # 11065)	11065-0062	1
SHAFT (Ref # 13107)	13107-2235	1
LEVER-COMP (Ref # 13236)	13236-0039	1
HOLDER-CABLE,SHIFT CONTROL (Ref # 14044)	14044-0005	1
HOLDER-CABLE,DIFF-LOCK (Ref # 14044A)	14044-0006	1
CASE-GEAR,RH (Ref # 14055)	14055-0008	1
CASE-GEAR,LH (Ref # 14055A)	14055-0013	1
BREATHER (Ref # 14069)	14069-1051	1
COVER (Ref # 14091)	14091-0394	1
COVER (Ref # 14092)	14092-0052	1
COVER (Ref # 14092A)	14092-0053	1
CAP-OIL FILLER (Ref # 16115)	16115-0015	1
CAP-OIL FILLER (Ref # 16115A)	16115-1053	1
ROD-TIE (Ref # 39111)	39111-0016	1
SLEEVE (Ref # 42036)	42036-2060	1
GOVERNOR-ASSY (Ref # 49110)	49110-0011	1
FITTING,BREATHER (Ref # 92005)	92005-1127	1
SCREW,64MM (Ref # 92009)	92009-1914	1
SCREW (Ref # 92009A)	92009-2308	6
NUT,16MM (Ref # 92015)	92015-1581	1
BUSHING (Ref # 92028)	92028-1347	1
CLAMP,TUBE (Ref # 92037)	92037-1505	2
PIN,6.2X8X14 (Ref # 92043)	92043-1263	2
BEARING-BALL,6210CM (Ref # 92045)	92045-1213	1
SEAL-OIL,HTC 30 60 8 (Ref # 92049)	92049-0049	2
SEAL-OIL,TC14245 (Ref # 92049A)	92049-1520	1
SEAL-OIL,HTC 28X45X7 (Ref # 92049B)	92049-1576	1
SEAL-OIL,VC-6X10X2.5 (Ref # 92049C)	92049-2097	1
SEAL-OIL,TB13225.5 (Ref # 92051)	92051-005	1

2018 MULE SX™ PARTS LIST

Gear Box

ITEM NAME	PART NUMBER	QUANTITY
RING-O (Ref # 92055)	92055-012	1
RING-O,ID=13.8 (Ref # 92055A)	92055-1141	1
RING-O,20X3 (Ref # 92055B)	92055-2185	1
GASKET,10.5X16X1 (Ref # 92065)	92065-058	1
PLUG (Ref # 92066)	92066-0033	1
PLUG,PT1/8X7 (Ref # 92066A)	92066-1227	1
PLUG,DRAIN,10X12 (Ref # 92067)	92067-001	1
BOLT,FLANGED,8X21 (Ref # 92153)	92153-0898	4
BOLT,10X30 (Ref # 92153A)	92153-0908	3
CLAMP (Ref # 92171)	92171-0476	1
TUBE (Ref # 92192)	92192-0216	1
WASHER,16.3X35X3.2 (Ref # 92200)	92200-0119	1
WASHER,8.2X20.0X2.5 (Ref # 92200A)	92200-0205	4
WASHER,10.2X23X2.5 (Ref # 92200B)	92200-0211	3
WASHER,6.2X20X0.5 (Ref # 92200C)	92200-2036	1
BOLT-FLANGED,6X14 (Ref # 130)	130BA0614	2
BOLT-FLANGED,6X16 (Ref # 130A)	130BA0616	1
BOLT-FLANGED,6X35 (Ref # 130B)	130BA0635	16
BOLT-FLANGED,10X25 (Ref # 130C)	130BA1025	2
BOLT-FLANGED,6X20 (Ref # 130D)	130CA0620	1
BEARING-BALL (Ref # 601)	601B6008	1
BEARING-BALL,#6206C3 (Ref # 601A)	601B6206	1
BEARING-BALL,#6303C3 (Ref # 601B)	601B6303	1
BEARING-BALL (Ref # 601C)	601B6303U	1
BEARING-BALL,#6305C3 (Ref # 601D)	601B6305	2
BEARING-BALL,#6305U (Ref # 601E)	601B6305U	1