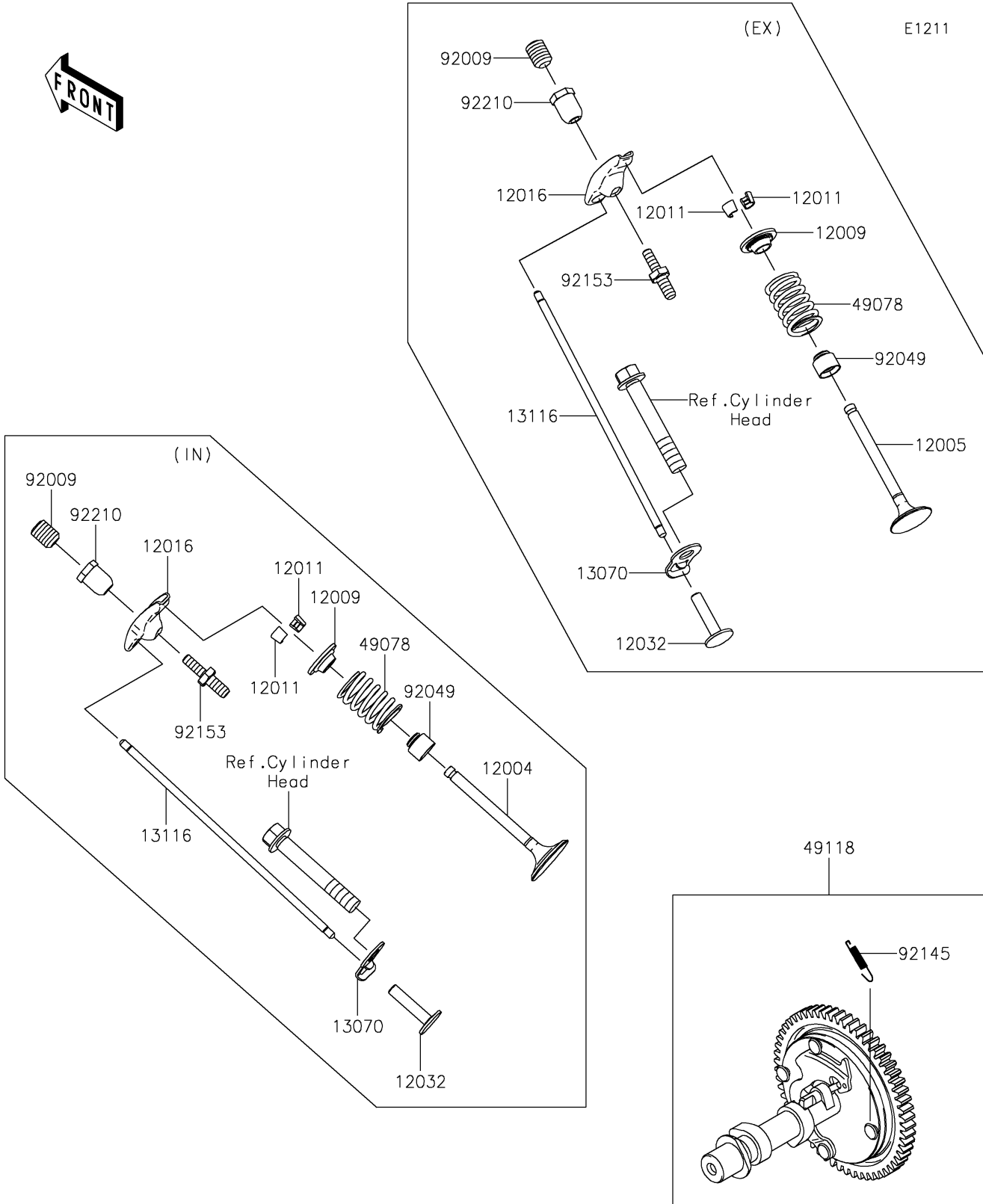


# 2017 MULE SX™ 4x4 XC SE PARTS DIAGRAM

Valve(s)/Camshaft(s)



## 2017 MULE SX™ 4x4 XC SE PARTS LIST

Valve(s)/Camshaft(s)

| ITEM NAME                           | PART NUMBER | QUANTITY |
|-------------------------------------|-------------|----------|
| VALVE-INTAKE (Ref # 12004)          | 12004-7004  | 1        |
| VALVE-EXHAUST (Ref # 12005)         | 12005-7013  | 1        |
| RETAINER-VALVE SPRING (Ref # 12009) | 12009-7004  | 2        |
| COLLET (Ref # 12011)                | 12011-2052  | 4        |
| ARM-ROCKER (Ref # 12016)            | 12016-7007  | 2        |
| TAPPET (Ref # 12032)                | 12032-7001  | 2        |
| GUIDE,ROD-PUSH (Ref # 13070)        | 13070-7012  | 2        |
| ROD-PUSH (Ref # 13116)              | 13116-7004  | 2        |
| SPRING-ENGINE VALVE (Ref # 49078)   | 49078-7003  | 2        |
| CAMSHAFT-COMP (Ref # 49118)         | 49118-0873  | 1        |
| SCREW (Ref # 92009)                 | 92009-2341  | 2        |
| SEAL-OIL,7X15X13 (Ref # 92049)      | 92049-7020  | 2        |
| SPRING (Ref # 92145)                | 92145-1653  | 1        |
| BOLT (Ref # 92153)                  | 92153-7019  | 2        |
| NUT,M6 (Ref # 92210)                | 92210-7033  | 2        |