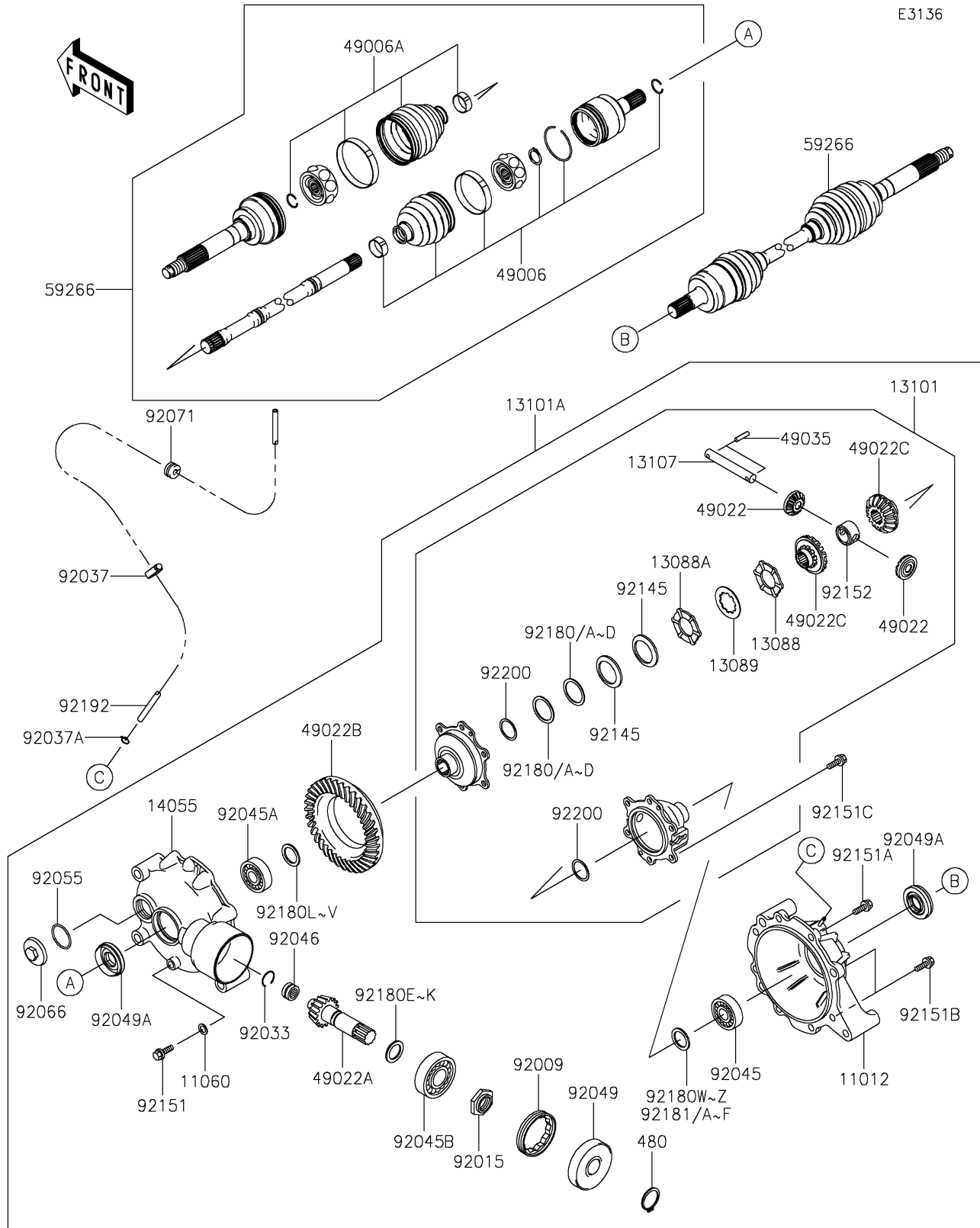


# 2019 MULE SX™ 4x4 XC FI PARTS DIAGRAM

Drive Shaft-Front

E3136



## 2019 MULE SX™ 4x4 XC FI PARTS LIST

### Drive Shaft-Front

ITEM NAME	PART NUMBER	QUANTITY
CAP,DRIVE SHAFT (Ref # 11012)	11012-1955	1
GASKET (Ref # 11060)	11060-1735	1
PLATE-FRICTION (Ref # 13088)	13088-0008	1
PLATE-FRICTION (Ref # 13088A)	13088-0009	1
PLATE-CLUTCH (Ref # 13089)	13089-1118	1
GEAR-ASSY (Ref # 13101)	13101-0047	1
GEAR-ASSY,FRONT DIFFERENTIAL (Ref # 13101A)	13101-0112	1
SHAFT (Ref # 13107)	13107-1369	1
CASE-GEAR (Ref # 14055)	14055-1129	1
BOOT,DOJ (Ref # 49006)	49006-0074	2
BOOT,UJ (Ref # 49006A)	49006-0105	2
GEAR-BEVEL (Ref # 49022)	49022-0017	2
GEAR-BEVEL (Ref # 49022A)	49022-1147	1
GEAR-BEVEL (Ref # 49022B)	49022-1148	1
GEAR-BEVEL (Ref # 49022C)	49022-1153	2
PIN-SPRING (Ref # 49035)	49035-1065	2
JOINT-BALL,FR (Ref # 59266)	59266-0039	2
SCREW,LOCK (Ref # 92009)	92009-1762	1
NUT,LOCK (Ref # 92015)	92015-1992	1
RING-SNAP (Ref # 92033)	92033-1289	1
CLAMP,HOSE (Ref # 92037)	92037-1827	1
CLAMP (Ref # 92037A)	92037-1835	1
BEARING-BALL (Ref # 92045)	92045-0147	1
BEARING-BALL (Ref # 92045A)	92045-1331	1
BEARING-BALL (Ref # 92045B)	92045-1332	1
BEARING-NEEDLE (Ref # 92046)	92046-1248	1
SEAL-OIL (Ref # 92049)	92049-1454	1
SEAL-OIL (Ref # 92049A)	92049-1455	2
RING-O,OIL FILLER (Ref # 92055)	92055-1553	1

## 2019 MULE SX™ 4x4 XC FI PARTS LIST

### Drive Shaft-Front

ITEM NAME	PART NUMBER	QUANTITY
PLUG,OIL FILLER (Ref # 92066)	92066-1441	1
GROMMET (Ref # 92071)	92071-0012	1
SPRING (Ref # 92145)	92145-1053	2
BOLT,SEALING (Ref # 92151)	92151-1051	1
BOLT,FLANGED (Ref # 92151A)	92151-1052	6
BOLT,FLANGED (Ref # 92151B)	92151-1053	2
BOLT (Ref # 92151C)	92151-1054	6
COLLAR (Ref # 92152)	92152-0145	1
SHIM,T=1.0 (Ref # 92180)	92180-1214	AR
SHIM,T=1.2 (Ref # 92180A)	92180-1215	AR
SHIM,T=1.4 (Ref # 92180B)	92180-1216	AR
SHIM,T=1.6 (Ref # 92180C)	92180-1217	AR
SHIM,T=1.8 (Ref # 92180D)	92180-1218	AR
SHIM,26X34X1.82 (Ref # 92180E)	92180-1219	AR
SHIM,26X34X1.88 (Ref # 92180F)	92180-1220	AR
SHIM,26X34X1.94 (Ref # 92180G)	92180-1221	AR
SHIM,26X34X2.00 (Ref # 92180H)	92180-1222	AR
SHIM,26X34X2.06 (Ref # 92180I)	92180-1223	AR
SHIM,26X34X2.12 (Ref # 92180J)	92180-1224	AR
SHIM,26X34X2.18 (Ref # 92180K)	92180-1225	AR
SHIM,T=1.75 (Ref # 92180L)	92180-1231	AR
SHIM,T=1.80 (Ref # 92180M)	92180-1232	AR
SHIM,T=1.85 (Ref # 92180N)	92180-1233	AR
SHIM,T=1.90 (Ref # 92180O)	92180-1234	AR
SHIM,T=1.95 (Ref # 92180P)	92180-1235	AR
SHIM,T=2.00 (Ref # 92180Q)	92180-1236	AR
SHIM,T=2.05 (Ref # 92180R)	92180-1237	AR
SHIM,T=2.10 (Ref # 92180S)	92180-1238	AR
SHIM,T=2.15 (Ref # 92180T)	92180-1239	AR

## 2019 MULE SX™ 4x4 XC FI PARTS LIST

### Drive Shaft-Front

ITEM NAME	PART NUMBER	QUANTITY
SHIM,T=2.20 (Ref # 92180U)	92180-1240	AR
SHIM,T=2.25 (Ref # 92180V)	92180-1241	AR
SHIM,T=0.75 (Ref # 92180W)	92180-1254	AR
SHIM,T=0.80 (Ref # 92180X)	92180-1255	AR
SHIM,T=0.85 (Ref # 92180Y)	92180-1256	AR
SHIM,T=0.90 (Ref # 92180Z)	92180-1257	AR
SHIM,T=0.95 (Ref # 92181)	92180-1258	AR
SHIM,T=1.00 (Ref # 92181A)	92180-1259	AR
SHIM,T=1.05 (Ref # 92181B)	92180-1260	AR
SHIM,T=1.10 (Ref # 92181C)	92180-1261	AR
SHIM,T=1.15 (Ref # 92181D)	92180-1262	AR
SHIM,T=1.20 (Ref # 92181E)	92180-1263	AR
SHIM,T=1.25 (Ref # 92181F)	92180-1264	AR
TUBE,4X7X1100 (Ref # 92192)	92192-0165	1
WASHER (Ref # 92200)	92200-1344	2
CIRCLIP-TYPE-C,22MM (Ref # 480)	480J2200	1