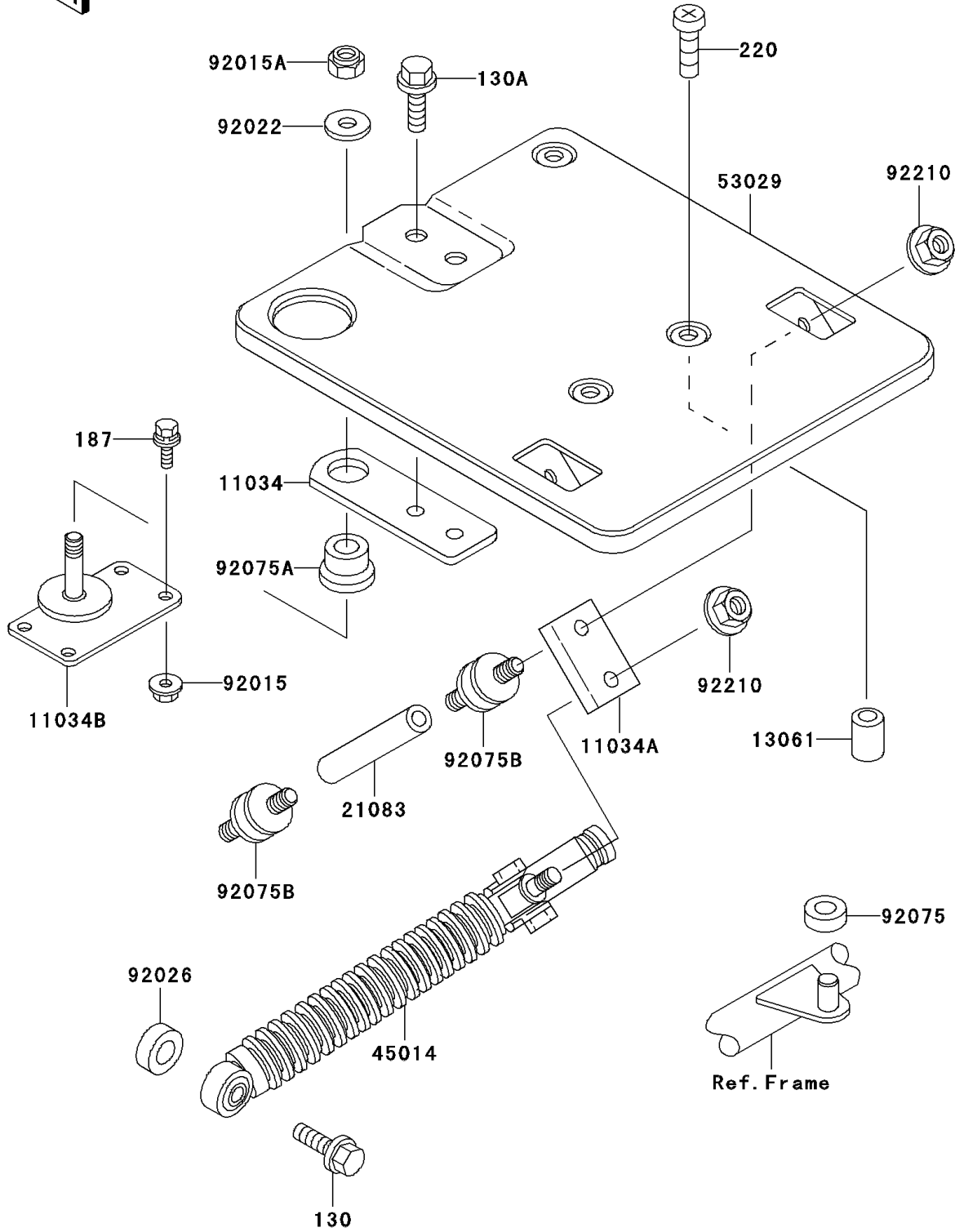


# 2005 Police 1000 PARTS DIAGRAM

Carrier(s)

F2520



## 2005 Police 1000 PARTS LIST

Carrier(s)

| ITEM NAME                                  | PART NUMBER | QUANTITY |
|--|-------------|----------|
| BOLT-FLANGED (Ref # 130)                   | 130C0835    | 1        |
| BOLT-FLANGED,8X16,BLACK (Ref # 130A)       | 130J0816    | 2        |
| BOLT-UPSET-WSP,6X22 (Ref # 187)            | 187C0622    | 4        |
| SCREW-PAN-CROS,8X14 (Ref # 220)            | 220B0814    | 2        |
| BRACKET,CARRIER,FR (Ref # 11034)           | 11034-4034  | 1        |
| BRACKET,CARRIER SIDE DAMPER (Ref # 11034A) | 11034-4103  | 1        |
| BRACKET,FR CARRIER DAMPER (Ref # 11034B)   | 11034-4159  | 1        |
| BOSS,CARRIER SPACER (Ref # 13061)          | 13061-4005  | 2        |
| ARM,CARRIER DAMPER (Ref # 21083)           | 21083-4006  | 2        |
| SHOCKABSORBER,RR (Ref # 45014)             | 45014-4005  | 1        |
| CARRIER (Ref # 53029)                      | 53029-4002  | 1        |
| NUT,FLANGED,6MM (Ref # 92015)              | 92015-1078  | 2        |
| NUT,LOCK,12MM,BLACK (Ref # 92015A)         | 92015-1190  | 1        |
| WASHER (Ref # 92022)                       | 92022-4002  | 1        |
| SPACER (Ref # 92026)                       | 92026-4003  | 1        |
| DAMPER (Ref # 92075)                       | 92075-203   | 1        |
| DAMPER,CARRIER (Ref # 92075A)              | 92075-4006  | 1        |
| DAMPER,CARRIER (Ref # 92075B)              | 92075-4040  | 4        |
| NUT,FLANGED,8MM (Ref # 92210)              | 92210-0004  | 3        |