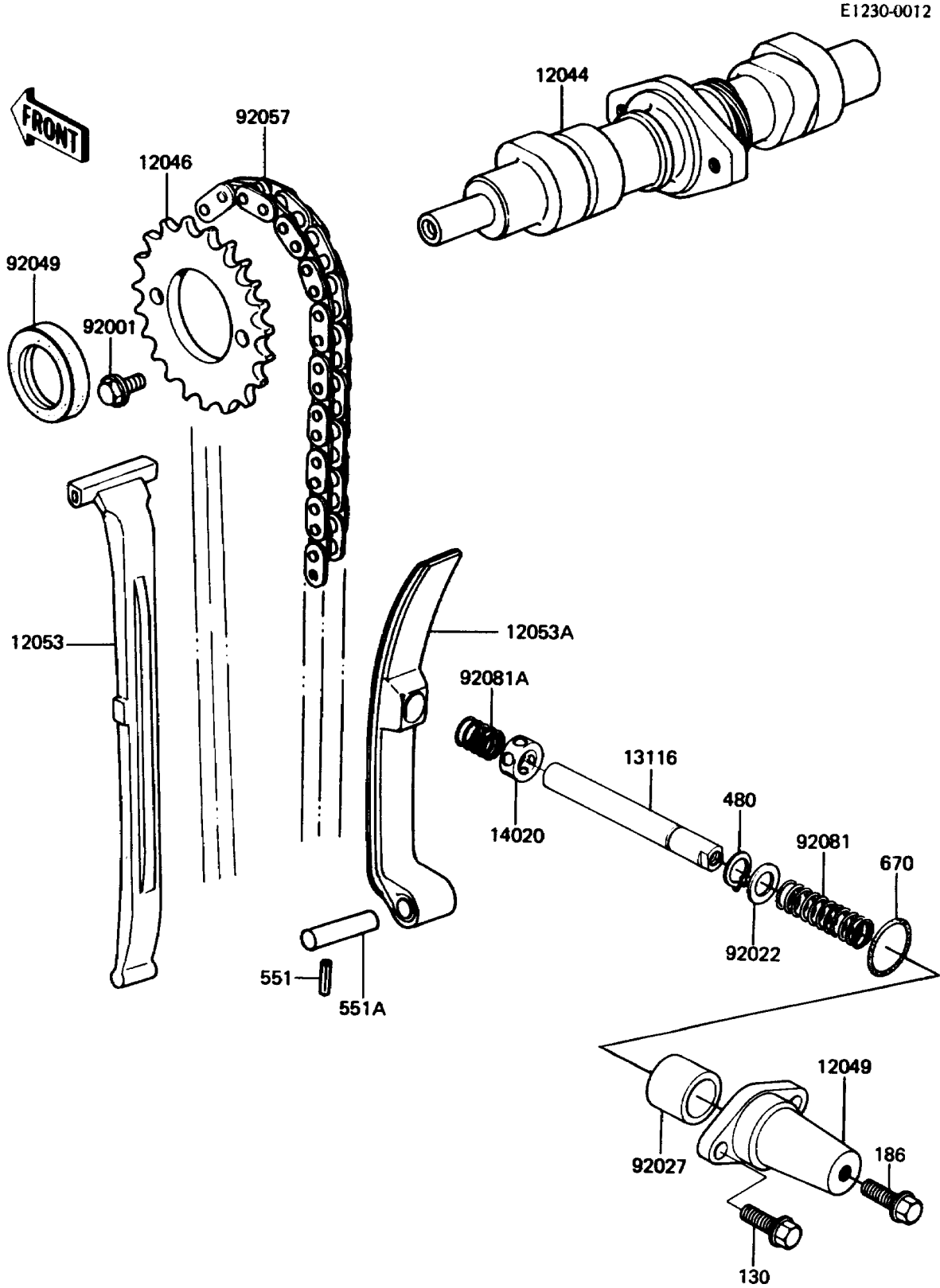


1988 LTD PARTS DIAGRAM

Camshaft(s)/Tensioner



1988 LTD PARTS LIST

Camshaft(s)/Tensioner

ITEM NAME	PART NUMBER	QUANTITY
CAMSHAFT-VALVE (Ref # 12044)	12044-1002	1
SPROCKET,CAMSHAFT (Ref # 12046)	12046-1008	1
TENSIONER,CAM CHAIN (Ref # 12049)	12049-1010	1
GUIDE-CHAIN,CAM (Ref # 12053)	12053-1020	1
GUIDE-CHAIN,CAM,RR (Ref # 12053A)	12053-1050	1
ROD-PUSH,TENSIONER (Ref # 13116)	13116-1022	1
RETAINER,TENSIONER (Ref # 14020)	14020-1002	1
BOLT,FLANGED,6X11 (Ref # 92001)	92003-208	2
WASHER,10.2X14.5X1.0 (Ref # 92022)	92022-1181	1
COLLAR,TENSIONER (Ref # 92027)	92027-1240	1
SEAL-OIL,S25407 (Ref # 92049)	92050-065	1
CHAIN,CAMSHAFT,BF05MX82L (Ref # 92057)	92057-1015	1
SPRING,TENSIONER (Ref # 92081)	92081-1206	1
SPRING,TENSIONER (Ref # 92081A)	92081-1207	1
BOLT-FLANGED (Ref # 130)	130Y0620	2
BOLT-UPSET-WP (Ref # 186)	186X0614	1
CIRCLIP-TYPE-C,10MM (Ref # 480)	480J1000	1
PIN-DOWEL,3X16 (Ref # 551)	551A0316	1
PIN-DOWEL,8X40 (Ref # 551A)	551A0840	1
O RING,21MM (Ref # 670)	670B2021	1