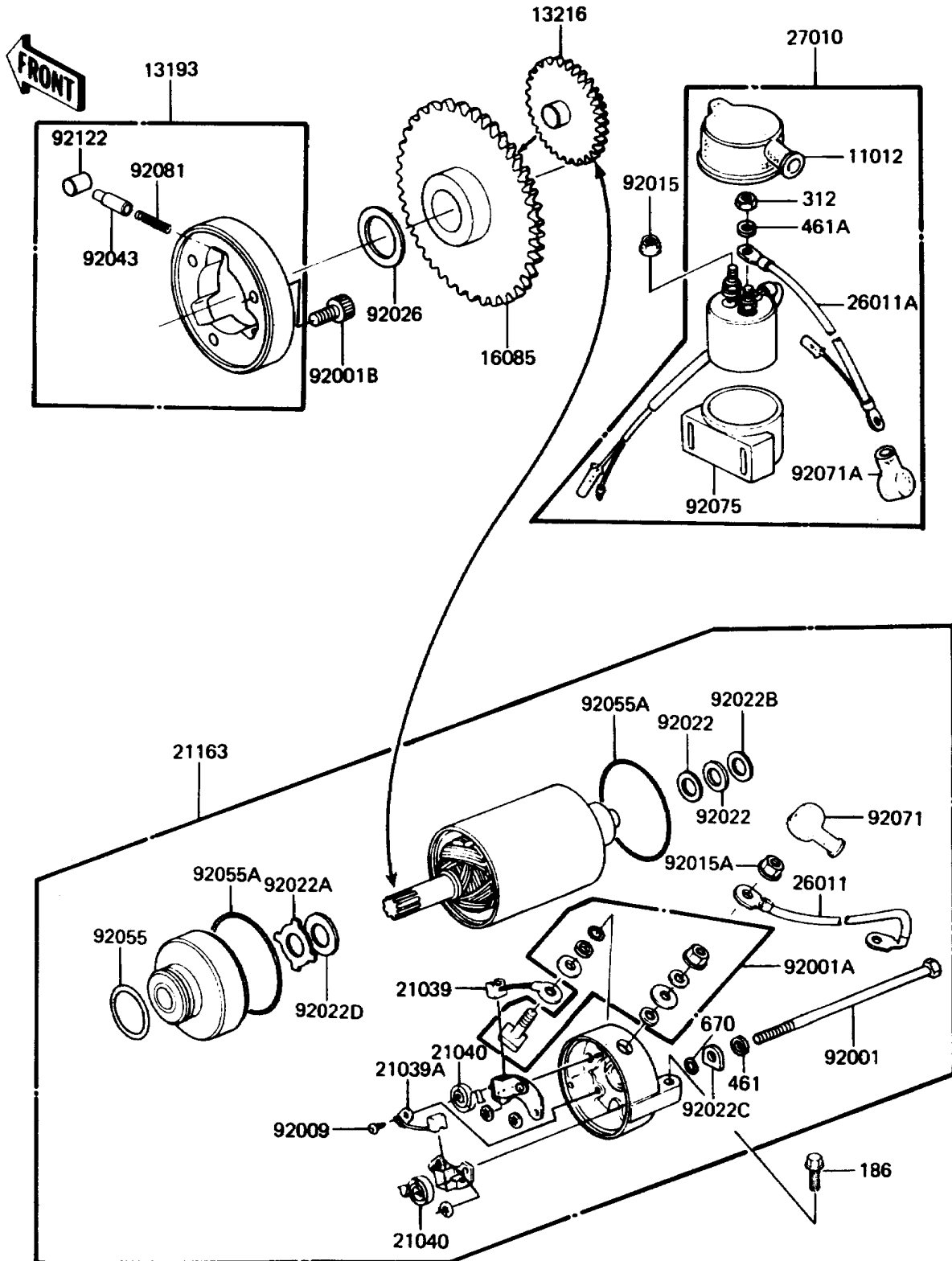


1988 LTD PARTS DIAGRAM

Starter Motor

E1840-0011



1988 LTD PARTS LIST

Starter Motor

ITEM NAME	PART NUMBER	QUANTITY
CAP,MAGNETIC SWITCH (Ref # 11012)	21141-004	1
CLUTCH-ASSY-ONEWAY (Ref # 13193)	13193-1002	1
GEAR-COMP,STARTER IDLE (Ref # 13216)	13216-1009	1
GEAR,ONEWAY CLUTCH (Ref # 16085)	16085-1032	1
BRUSH,CARBON(+) (Ref # 21039)	21039-1001	1
BRUSH,CARBON(-) (Ref # 21039A)	21039-1002	1
SPRING-BRUSH (Ref # 21040)	21040-1001	2
STARTER-ELECTRIC (Ref # 21163)	21163-1131	1
WIRE-LEAD,STARTER MOTOR (Ref # 26011)	26011-1049	1
WIRE-LEAD,MAGNETIC SWITCH (Ref # 26011A)	26011-1128	1
SWITCH,MAGNETIC (Ref # 27010)	27010-1050	1
BOLT,PAN HEAD,5X108.5 (Ref # 92001)	92001-1156	2
BOLT,TERMINAL (Ref # 92001A)	92001-1204	1
BOLT,SOCKET,8X10 (Ref # 92001B)	92001-1424	3
SCREW,TAPPING,3.5X8 (Ref # 92009)	92009-1058	1
NUT,FLANGED,6MM (Ref # 92015)	92015-1193	1
NUT,STARTER MOTOR (Ref # 92015A)	92015-1476	1
WASHER,9.1X18X0.2 (Ref # 92022)	21025-011	2
WASHER,THRUST SUPPORT (Ref # 92022A)	92022-1130	1
WASHER,9.1X18X0.8 (Ref # 92022B)	92022-1132	1
WASHER,LOCK,T=3.2 (Ref # 92022C)	92022-1133	2
WASHER,22X12.2X0.5 (Ref # 92022D)	92022-1714	1
SPACER,22X35.5X1.0 (Ref # 92026)	92026-092	1
PIN (Ref # 92043)	92043-132	3
RING-O (Ref # 92055)	92055-1303	1
RING-O (Ref # 92055A)	92055-1418	2
GROMMET,STARTER TERMINAL (Ref # 92071)	21017-017	1
GROMMET,MAGNETIC SWITCH (Ref # 92071A)	21017-023	1
DAMPER,MAGNETIC SWITCH (Ref # 92075)	21064-002	1

1988 LTD PARTS LIST

Starter Motor

ITEM NAME	PART NUMBER	QUANTITY
SPRING,COIL (Ref # 92081)	92081-159	3
ROLLER (Ref # 92122)	92122-006	3
BOLT-UPSET-WP (Ref # 186)	186B0620	2
NUT-HEX,6MM (Ref # 312)	312B0600	1
WASHER-SPRING,5MM (Ref # 461)	461F0500	2
WASHER-SPRING,6MM (Ref # 461A)	461F0600	1
O RING,5MM (Ref # 670)	670B1505	2