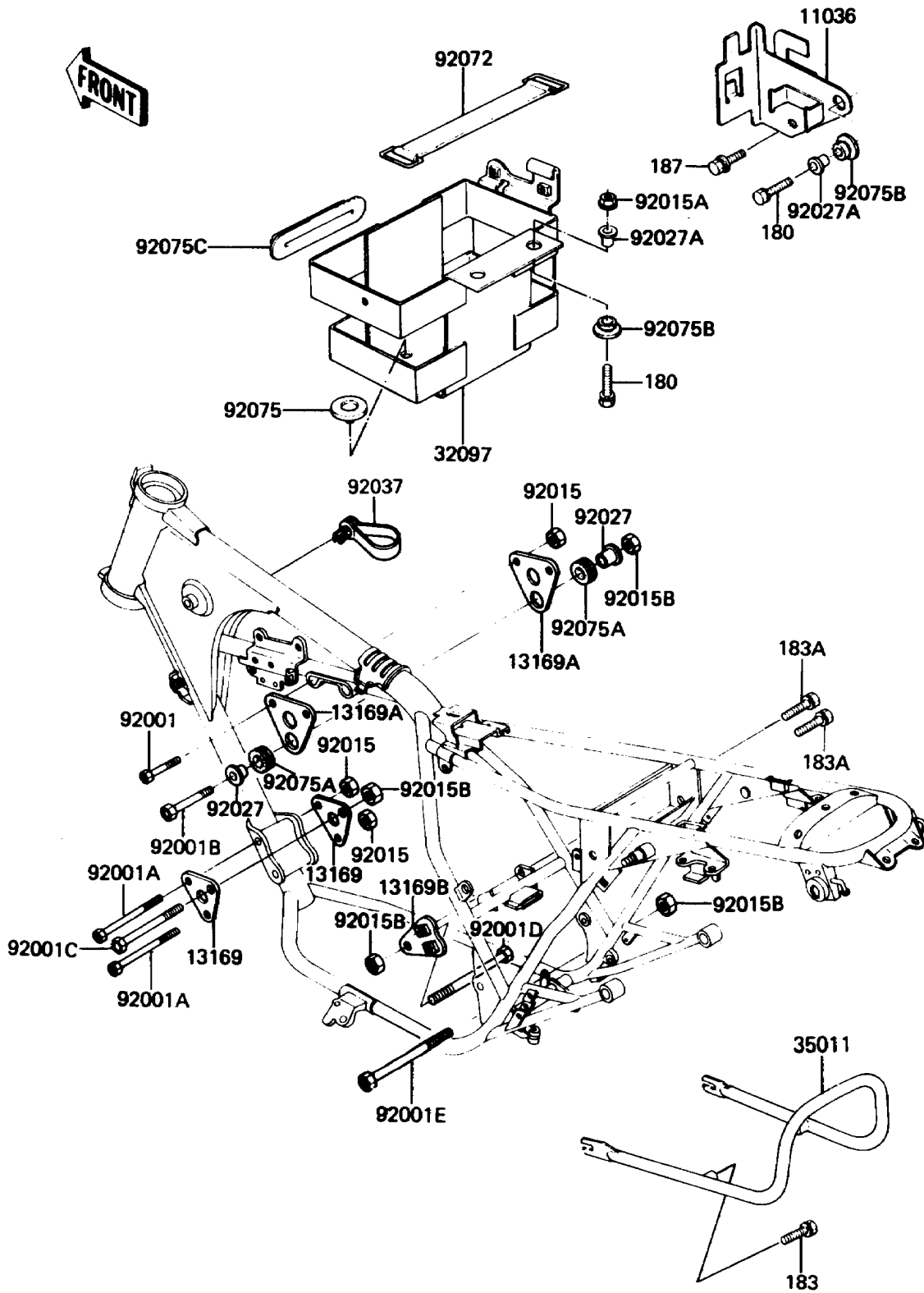


# 1988 LTD PARTS DIAGRAM

Frame Fittings

F2151-0188



# 1988 LTD PARTS LIST

## Frame Fittings

ITEM NAME	PART NUMBER	QUANTITY
BRACKET-A,ELECTRO BASE (Ref # 11036)	11036-1050	1
PLATE,ENGINE,FRONT (Ref # 13169)	13169-1111	2
PLATE,ENGINE,HEAD (Ref # 13169A)	13169-1112	2
PLATE,ENGINE,REAR-UPP (Ref # 13169B)	13169-1113	1
CASE-BATTERY (Ref # 32097)	32097-1053	1
STAY,RR (Ref # 35011)	35011-1120	1
BOLT,FLANGED,8X50 (Ref # 92001)	92001-1580	2
BOLT,FLANGED,8X110 (Ref # 92001A)	92001-1597	2
BOLT,FLANGED,10X70 (Ref # 92001B)	92001-1600	1
BOLT,FLANGED,10X110 (Ref # 92001C)	92001-1602	1
BOLT,FLANGED,10X130 (Ref # 92001D)	92001-1604	1
BOLT,FLANGED,10X145 (Ref # 92001E)	92001-1605	1
NUT,LOCK,8MM (Ref # 92015)	92015-1124	4
NUT,FLANGED,6MM (Ref # 92015A)	92015-1193	2
NUT,LOCK,10MM (Ref # 92015B)	92015-1429	4
COLLAR,L=16.3 (Ref # 92027)	92027-1116	2
COLLAR,L=11.1 (Ref # 92027A)	92027-194	3
CLAMP (Ref # 92037)	92037-1290	1
BAND,L=142.1 (Ref # 92072)	92072-006	1
DAMPER,RUBBER (Ref # 92075)	92075-078	4
DAMPER (Ref # 92075A)	92075-1086	2
DAMPER (Ref # 92075B)	92075-277	3
DAMPER (Ref # 92075C)	92075-280	1
BOLT-UPSET-WS (Ref # 180)	180B0622	3
BOLT-UPSET-WS-SMALL (Ref # 183)	183B0816	2
BOLT-UPSET-WS-SMALL (Ref # 183A)	183G0820	2
BOLT-UPSET-WSP (Ref # 187)	187B0612	1