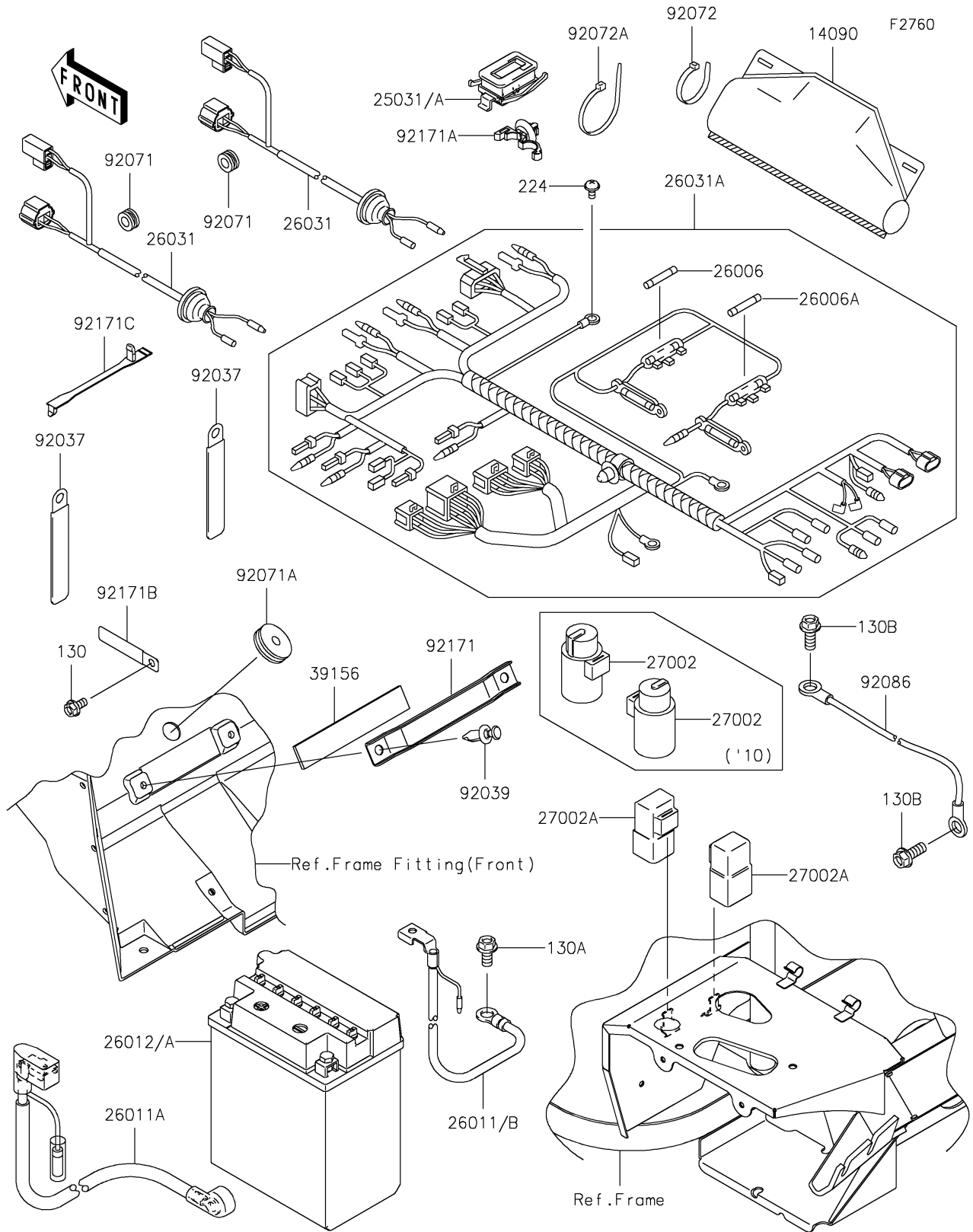


2013 MULE™ 610 4x4 XC PARTS DIAGRAM

Chassis Electrical Equipment



2013 MULE™ 610 4x4 XC PARTS LIST

Chassis Electrical Equipment

| ITEM NAME | PART NUMBER | QUANTITY |
|--|-------------|----------|
| COVER,COUPLER (Ref # 14090) | 14090-1331 | 3 |
| METER-ASSY,AC,AF400/620&RF750 (Ref # 25031) | 25031-0397 | 1 |
| FUSE,GLASS TUBE,6.4X30,10A,YEL (Ref # 26006) | 26006-1002 | 2 |
| FUSE,30A,L=32 (Ref # 26006A) | 26006-1065 | 2 |
| WIRE-LEAD,BATTERY(+) (Ref # 26011A) | 26011-0048 | 1 |
| WIRE-LEAD,BATTERY(-) (Ref # 26011B) | 26011-0738 | 1 |
| BATTERY,YB14A-A2,12V 14AH (Ref # 26012A) | 26012-1446 | 1 |
| HARNESS,HEAD LAMP (Ref # 26031) | 26031-0155 | 2 |
| HARNESS,MAIN (Ref # 26031A) | 26031-0718 | 1 |
| RELAY-ASSY (Ref # 27002A) | 27002-1088 | 2 |
| PAD (Ref # 39156) | 39156-0063 | 1 |
| CLAMP,HARNESS,L=100 (Ref # 92037) | 92037-1636 | 2 |
| RIVET (Ref # 92039) | 92039-1229 | 2 |
| GROMMET (Ref # 92071) | 92071-1128 | 2 |
| GROMMET (Ref # 92071A) | 92071-1136 | 1 |
| BAND,L=123 (Ref # 92072) | 92072-030 | 3 |
| BAND,L=188 (Ref # 92072A) | 92072-1239 | 6 |
| WIRE (Ref # 92086) | 92086-1054 | 1 |
| CLAMP (Ref # 92171) | 92171-0301 | 1 |
| CLAMP (Ref # 92171A) | 92171-0453 | 5 |
| CLAMP (Ref # 92171B) | 92171-0652 | 1 |
| CLAMP (Ref # 92171C) | 92171-1365 | 1 |
| BOLT-FLANGED,6X12 (Ref # 130) | 130AA0612 | 1 |
| BOLT-FLANGED,8X16 (Ref # 130A) | 130BA0816 | 1 |
| BOLT-FLANGED,8X20 (Ref # 130B) | 130BB0820 | 2 |
| SCREW-PAN-WP-CROS,5X8 (Ref # 224) | 224AA0508 | 1 |