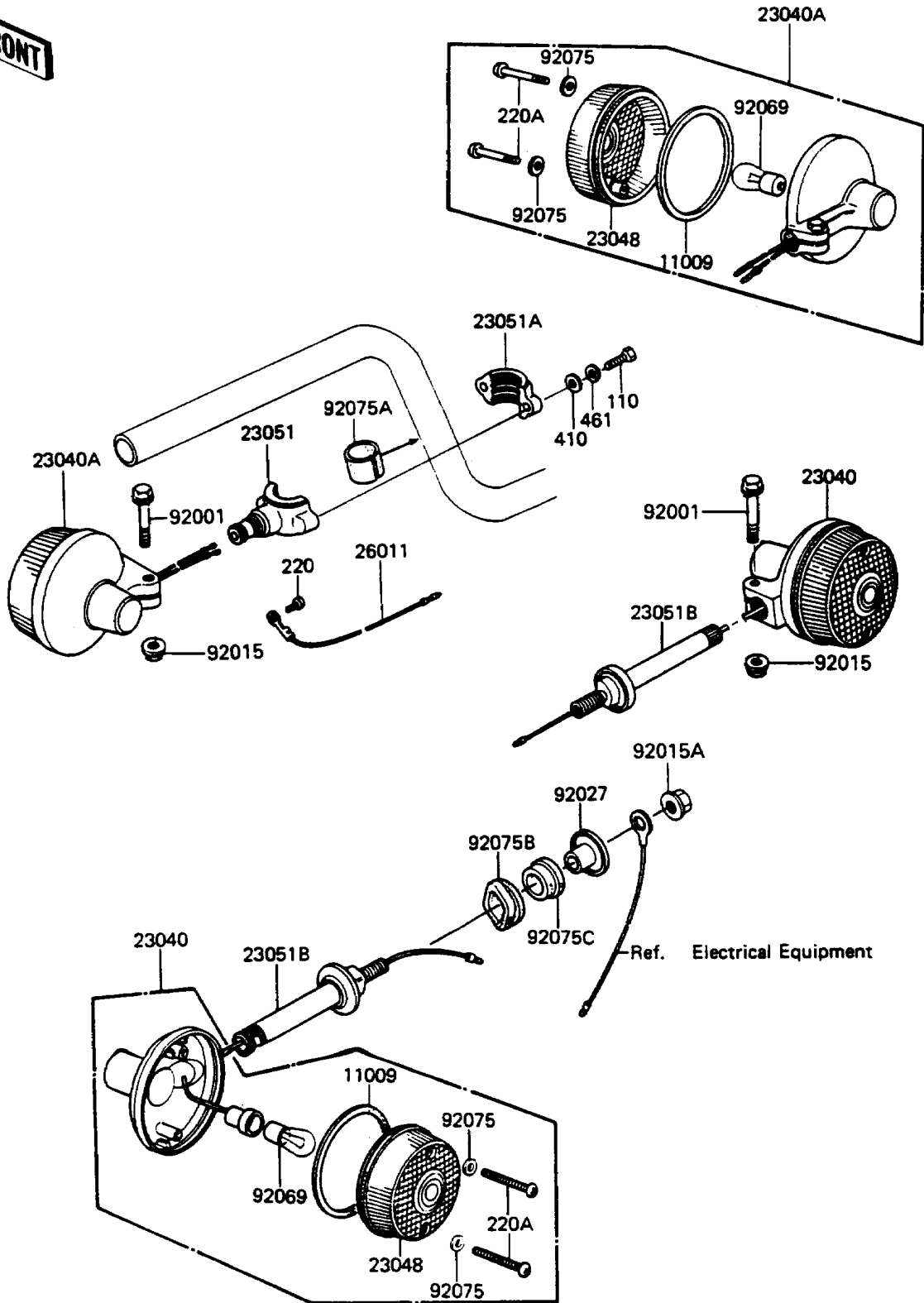


# 1988 LTD PARTS DIAGRAM

Turn Signals

F2730-0028



# 1988 LTD PARTS LIST

## Turn Signals

ITEM NAME	PART NUMBER	QUANTITY
GASKET,SIGNAL LAMP (Ref # 11009)	23050-003	4
LAMP-SIGNAL (Ref # 23040)	23040-054	2
LAMP-SIGNAL (Ref # 23040A)	23040-1024	2
LENS-SIGNAL LAMP,"045-6588" (Ref # 23048)	23048-1001	4
BRACKET-SIGNAL LAMP,FR (Ref # 23051)	23051-1004	2
BRACKET-SIGNAL LAMP,FR (Ref # 23051A)	23051-1013	2
BRACKET-SIGNAL LAMP (Ref # 23051B)	23051-1014	2
WIRE-LEAD,SIGNAL LAMP (Ref # 26011)	26011-061	2
BOLT,6X30,CR PLATED (Ref # 92001)	92001-1746	4
NUT,FLANGED,6MM (Ref # 92015)	92015-1193	4
NUT,FLANGED,10MM (Ref # 92015A)	92015-1428	2
COLLAR (Ref # 92027)	92027-147	2
BULB,12V 32CP(23W) (Ref # 92069)	92069-055	4
WASHER,PLAIN,4MM (Ref # 92075)	23058-002	8
DAMPER (Ref # 92075A)	23066-003	2
DAMPER,LAMP (Ref # 92075B)	92075-128	2
DAMPER (Ref # 92075C)	92075-158	2
BOLT (Ref # 110)	110N0516	4
SCREW-PAN-CROS (Ref # 220)	220B0304	2
SCREW-PAN-CROS (Ref # 220A)	220B0420	8
WASHER-PLAIN-SMALL,5MM (Ref # 410)	410D0500	4
WASHER-SPRING,5MM (Ref # 461)	461F0500	4