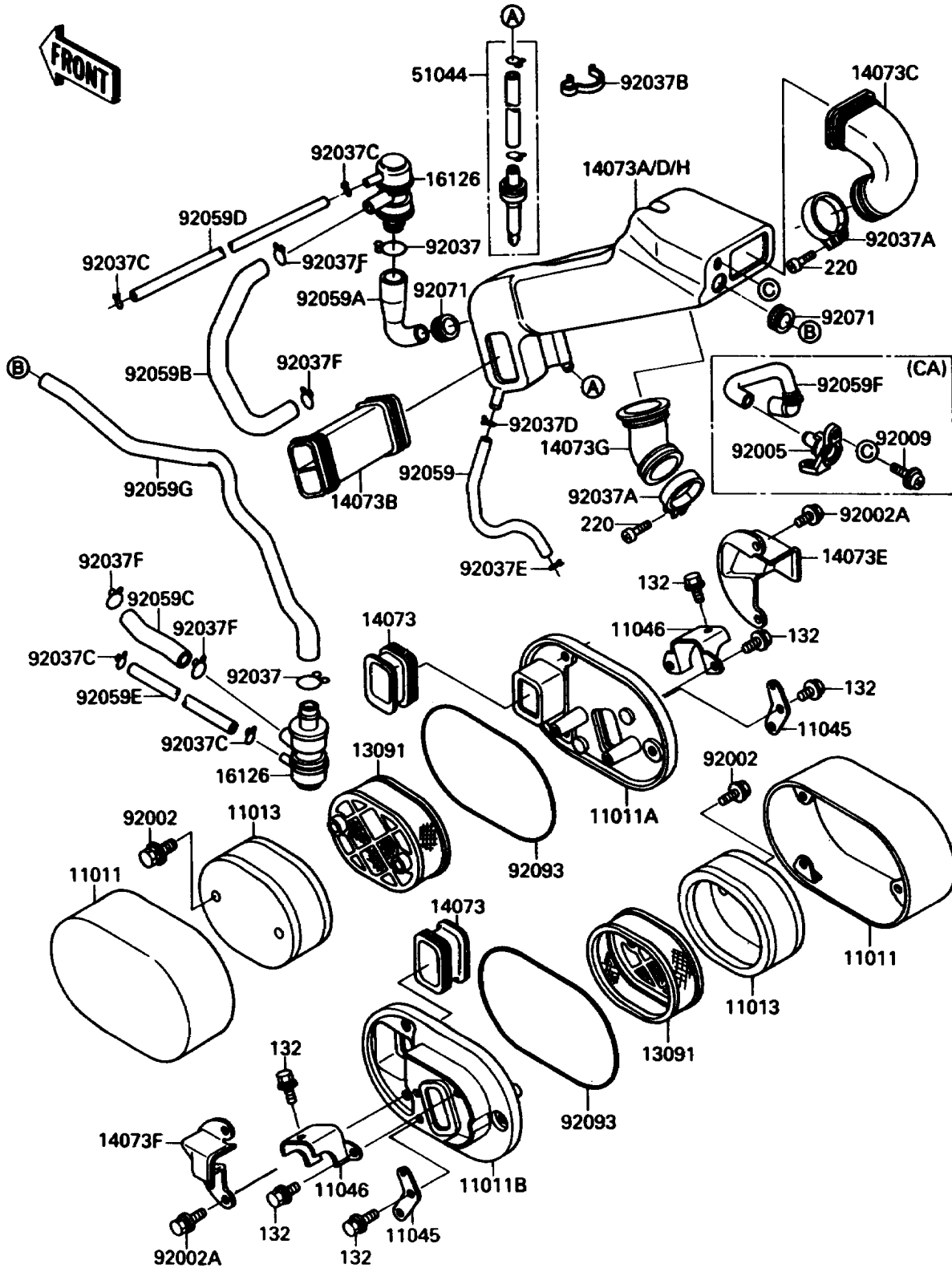


1991 Vulcan 88 PARTS DIAGRAM

Air Filter

E 1130



1991 Vulcan 88 PARTS LIST

Air Filter

| ITEM NAME | PART NUMBER | QUANTITY |
|--|-------------|----------|
| CASE-AIR FILTER,OUTSIDE (Ref # 11011) | 11011-1248 | 2 |
| CASE-AIR FILTER,LH,INSIDE (Ref # 11011A) | 11011-1289 | 1 |
| CASE-AIR FILTER,RH,INSIDE (Ref # 11011B) | 11011-1290 | 1 |
| ELEMENT-AIR FILTER (Ref # 11013) | 11013-1122 | 2 |
| BRACKET,AIR FILTER,LWR (Ref # 11045) | 11045-1434 | 2 |
| BRACKET,AIR FILTER,UPP (Ref # 11046) | 11046-1035 | 2 |
| HOLDER,ELEMENT (Ref # 13091) | 13091-1345 | 2 |
| DUCT,INLET (Ref # 14073) | 14073-1296 | 2 |
| DUCT,SURGE TANK (Ref # 14073A) | 14073-1297 | 1 |
| DUCT,AIR FILTER (Ref # 14073B) | 14073-1298 | 2 |
| DUCT,FR,CARBURETOR (Ref # 14073C) | 14073-1299 | 1 |
| DUCT,SURGE TANK (Ref # 14073D) | 14073-1306 | 1 |
| DUCT,LH (Ref # 14073E) | 14073-1316 | 1 |
| DUCT,RH (Ref # 14073F) | 14073-1317 | 1 |
| DUCT,RR,CARBURETOR (Ref # 14073G) | 14073-1326 | 1 |
| VALVE,AIR SWITCH (Ref # 16126) | 16126-1188 | 2 |
| TUBE-ASSY (Ref # 51044) | 51044-1089 | 1 |
| BOLT,6X25 (Ref # 92002) | 92002-1137 | 4 |
| BOLT,6X16 (Ref # 92002A) | 92002-1242 | 6 |
| FITTING (Ref # 92005) | 92005-1163 | 1 |
| SCREW,6X14 (Ref # 92009) | 92009-1272 | 2 |
| CLAMP,TUBE (Ref # 92037) | 92037-1076 | 2 |
| CLAMP,BOOT FITTING (Ref # 92037A) | 92037-1112 | 2 |
| CLAMP,HOSE (Ref # 92037B) | 92037-1552 | 1 |
| CLAMP (Ref # 92037C) | 92037-1712 | 4 |
| CLAMP,14MM (Ref # 92037D) | 92037-1862 | 1 |
| CLAMP,BREATHER TUBE (Ref # 92037E) | 92037-192 | 1 |
| CLAMP,TUBE (Ref # 92037F) | 92037-213 | 4 |
| TUBE,BREATHER (Ref # 92059) | 92059-1777 | 1 |

1991 Vulcan 88 PARTS LIST

Air Filter

| ITEM NAME | PART NUMBER | QUANTITY |
|--|-------------|----------|
| TUBE,ASV-SURGE TANK (Ref # 92059A) | 92059-1779 | 1 |
| TUBE,VALVE-ASV (Ref # 92059B) | 92059-1780 | 1 |
| TUBE,ASV-CAP(R) (Ref # 92059C) | 92059-1783 | 1 |
| TUBE,4X9X420 (Ref # 92059D) | 92059-1820 | 1 |
| TUBE,4X9X650 (Ref # 92059E) | 92059-1846 | 1 |
| TUBE,AIR FILTER (Ref # 92059F) | 92059-1859 | 1 |
| TUBE,AIR VALVE-AIR FILTER (Ref # 92059G) | 92059-1873 | 1 |
| GROMMET,AIR FILTER (Ref # 92071) | 92071-1028 | 2 |
| SEAL,AIR FILTER (Ref # 92093) | 92093-1236 | 2 |
| BOLT-FLANGED-SMALL,6X10 (Ref # 132) | 132J0610 | 10 |
| SCREW-PAN-CROS (Ref # 220) | 220C0430 | 2 |