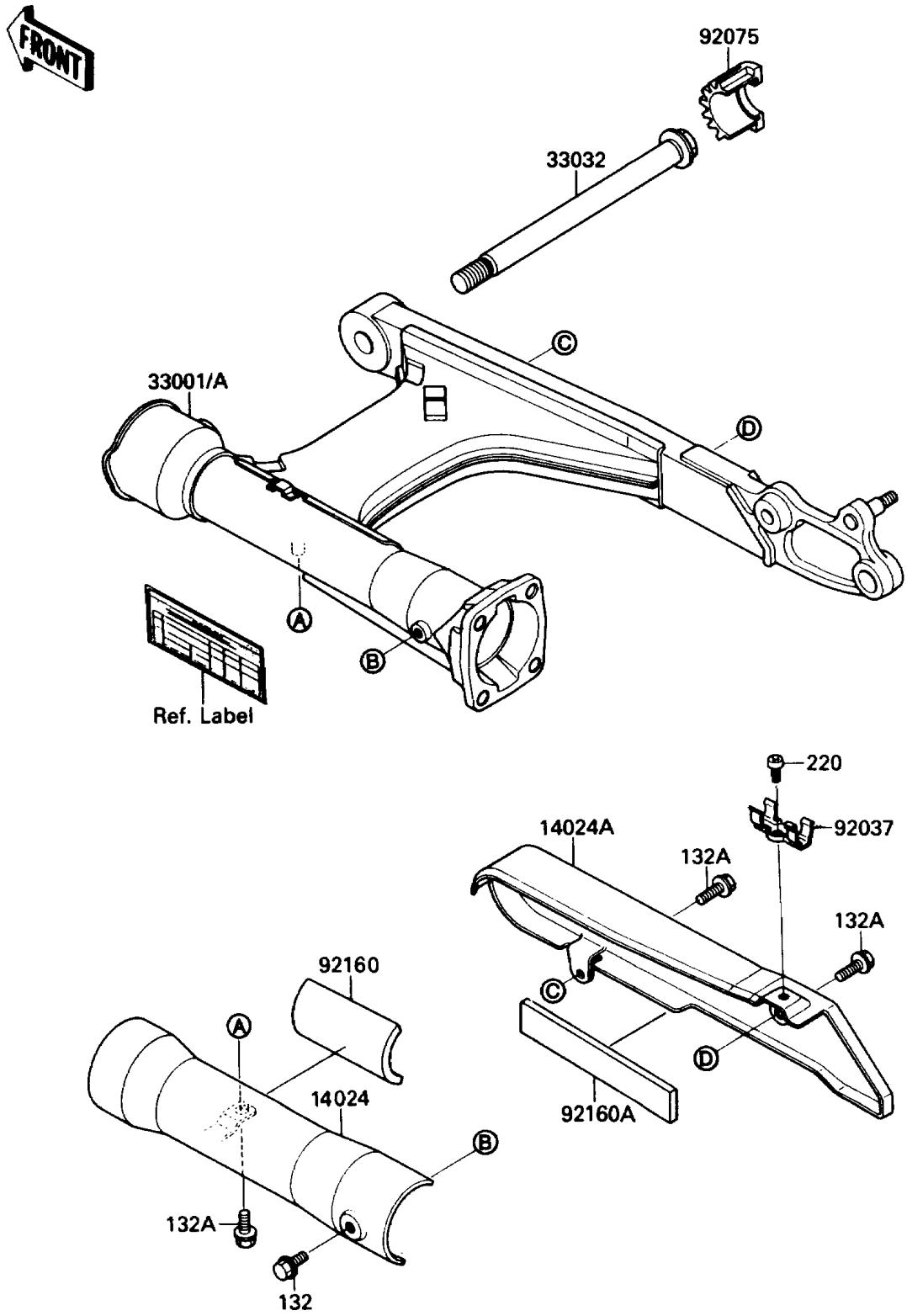


1988 Vulcan 88 PARTS DIAGRAM

Swing Arm

F2141



1988 Vulcan 88 PARTS LIST

Swing Arm

| ITEM NAME | PART NUMBER | QUANTITY |
|--|---------------|----------|
| COVER,SWING ARM,LH (Ref # 14024) | 14024-1410 | 1 |
| COVER,SWING ARM,RH (Ref # 14024A) | 14024-1411 | 1 |
| ARM-COMP-SWING,SILVER NO.15 (Ref # 33001A) | 33001-1287-X3 | 1 |
| SHAFT-SWING ARM (Ref # 33032) | 33032-1131 | 1 |
| CLAMP (Ref # 92037) | 92037-1879 | 1 |
| DAMPER,SWING ARM COVER (Ref # 92075) | 92075-1917 | 1 |
| DAMPER (Ref # 92160) | 92160-1004 | 1 |
| DAMPER,SWING ARM COVER,RH (Ref # 92160A) | 92160-1005 | 1 |
| BOLT-FLANGED-SMALL (Ref # 132) | 132E0610 | 1 |
| BOLT-FLANGED-SMALL (Ref # 132A) | 132E0612 | 3 |
| SCREW-PAN-CROS,5X8 (Ref # 220) | 220E0508 | 1 |