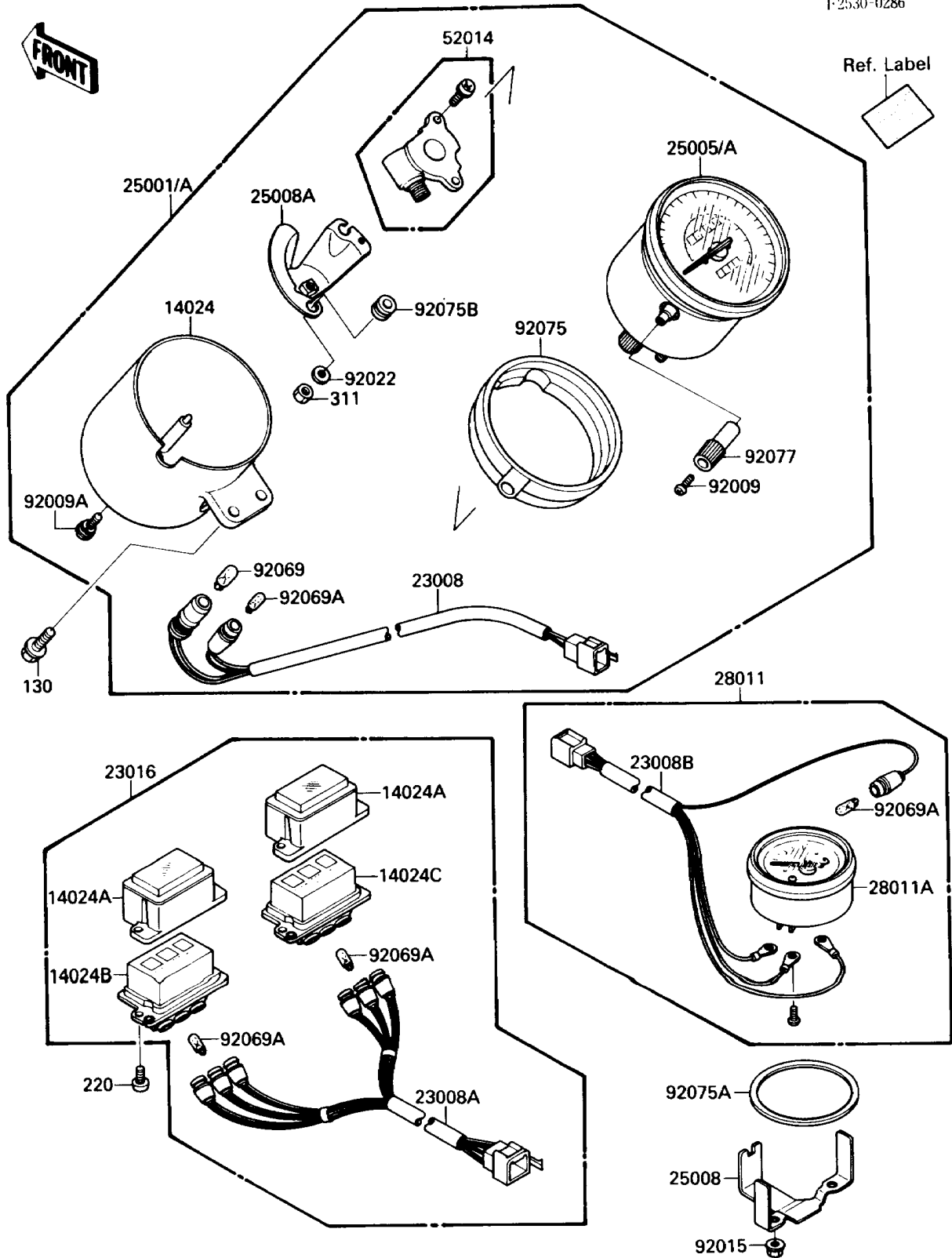


# 1991 Vulcan 88 PARTS DIAGRAM

Meter



# 1991 Vulcan 88 PARTS LIST

## Meter

| ITEM NAME                              | PART NUMBER | QUANTITY |
|--|-------------|----------|
| COVER,METER,LWR (Ref # 14024)          | 14024-1504  | 1        |
| COVER,PILOT BOX,UPP (Ref # 14024A)     | 14024-1505  | 2        |
| COVER,PILOT BOX,LH,LWR (Ref # 14024B)  | 14024-1506  | 1        |
| COVER,PILOT BOX,RH,LWR (Ref # 14024C)  | 14024-1507  | 1        |
| SOCKET-ASSY,METER (Ref # 23008)        | 23008-1340  | 1        |
| SOCKET-ASSY,PILOT BOX (Ref # 23008A)   | 23008-1341  | 1        |
| SOCKET-ASSY,FUEL METER (Ref # 23008B)  | 23008-1342  | 1        |
| LAMP-ASSY,PILOT BOX (Ref # 23016)      | 23016-1082  | 1        |
| METER-ASSY,MPH (Ref # 25001)           | 25001-1691  | 1        |
| SPEEDOMETER,MPH (Ref # 25005)          | 25005-1365  | 1        |
| BRACKET-METER (Ref # 25008)            | 25008-1136  | 1        |
| BRACKET-METER (Ref # 25008A)           | 25008-1139  | 1        |
| METER,FUEL (Ref # 28011)               | 28011-1099  | 1        |
| METER,FUEL (Ref # 28011A)              | 28011-1102  | 1        |
| ELBOW,SPEEDOMETER GEAR (Ref # 52014)   | 52014-1006  | 1        |
| SCREW,2X6,BLACK (Ref # 92009)          | 92009-1172  | 1        |
| SCREW,5X10 (Ref # 92009A)              | 92009-1478  | 1        |
| NUT,FLANGED,5MM (Ref # 92015)          | 92015-1259  | 2        |
| WASHER,4.3X12.5X1 (Ref # 92022)        | 92022-1888  | 2        |
| BULB,12V 3.4W (Ref # 92069)            | 92069-1007  | 1        |
| BULB,12V 3W (Ref # 92069A)             | 92069-1068  | 8        |
| DAMPER,SHOCK,METER (Ref # 92075)       | 92075-1953  | 1        |
| DAMPER,SHOCK,FUEL METER (Ref # 92075A) | 92075-1954  | 1        |
| DAMPER,METER FITTING (Ref # 92075B)    | 92075-1956  | 2        |
| KNOB,METER (Ref # 92077)               | 92077-1077  | 1        |
| BOLT-FLANGED,6X16 (Ref # 130)          | 130B0616    | 2        |
| SCREW-PAN-CROS (Ref # 220)             | 220B0414    | 4        |
| NUT-HEX (Ref # 311)                    | 311B0400    | 2        |