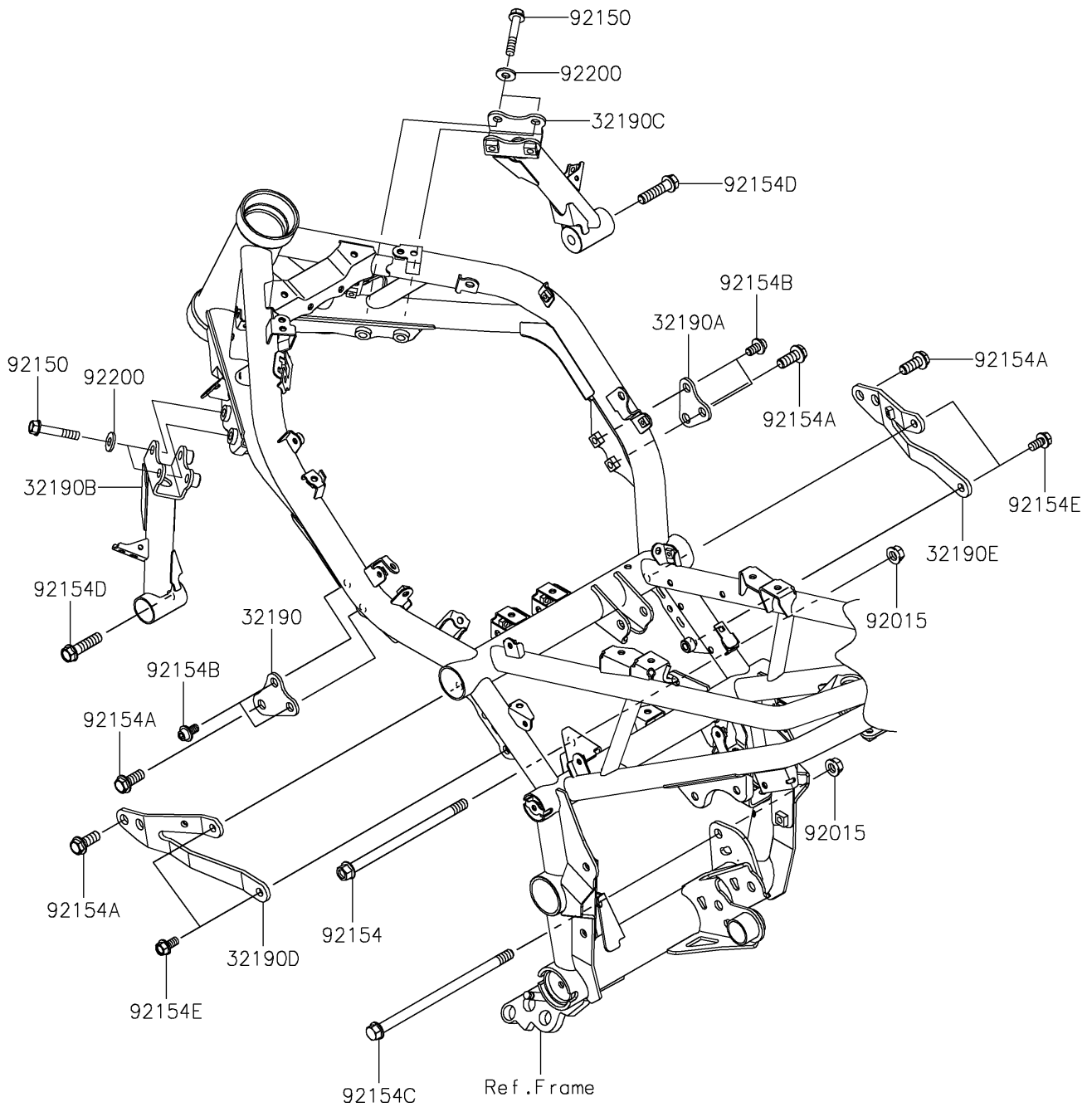


# 2022 Z900 SE PARTS DIAGRAM

Engine Mount

F2122



## 2022 Z900 SE PARTS LIST

### Engine Mount

| ITEM NAME                                  | PART NUMBER    | QUANTITY |
|--|----------------|----------|
| BRACKET-ENGINE,LH,F.S.BLACK (Ref # 32190)  | 32190-0723-18R | 1        |
| BRACKET-ENGINE,RH,F.S.BLACK (Ref # 32190A) | 32190-0724-18R | 1        |
| BRACKET-ENGINE,LH,F.S.BLACK (Ref # 32190B) | 32190-0831-18R | 1        |
| BRACKET-ENGINE,RH,F.S.BLACK (Ref # 32190C) | 32190-0832-18R | 1        |
| BRACKET-ENGINE,CYL.,LH (Ref # 32190D)      | 32190-0843     | 1        |
| BRACKET-ENGINE,CYL.,RH (Ref # 32190E)      | 32190-0844     | 1        |
| NUT,FLANGED,10MM (Ref # 92015)             | 92015-1180     | 2        |
| BOLT,FLANGED,8X45 (Ref # 92150)            | 92150-1487     | 4        |
| BOLT,FLANGED,10X170 (Ref # 92154)          | 92154-0840     | 1        |
| BOLT,FLANGED,10X25 (Ref # 92154A)          | 92154-2251     | 4        |
| BOLT,SOCKET,8X14 (Ref # 92154B)            | 92154-2252     | 4        |
| BOLT,FLANGED,10X195 (Ref # 92154C)         | 92154-4070     | 1        |
| BOLT,FLANGED,10X40 (Ref # 92154D)          | 92154-4122     | 2        |
| BOLT-FLANGED,8X16 (Ref # 92154E)           | 92154-4297     | 4        |
| WASHER,8.5X18X2.3 (Ref # 92200)            | 92200-2481     | 4        |