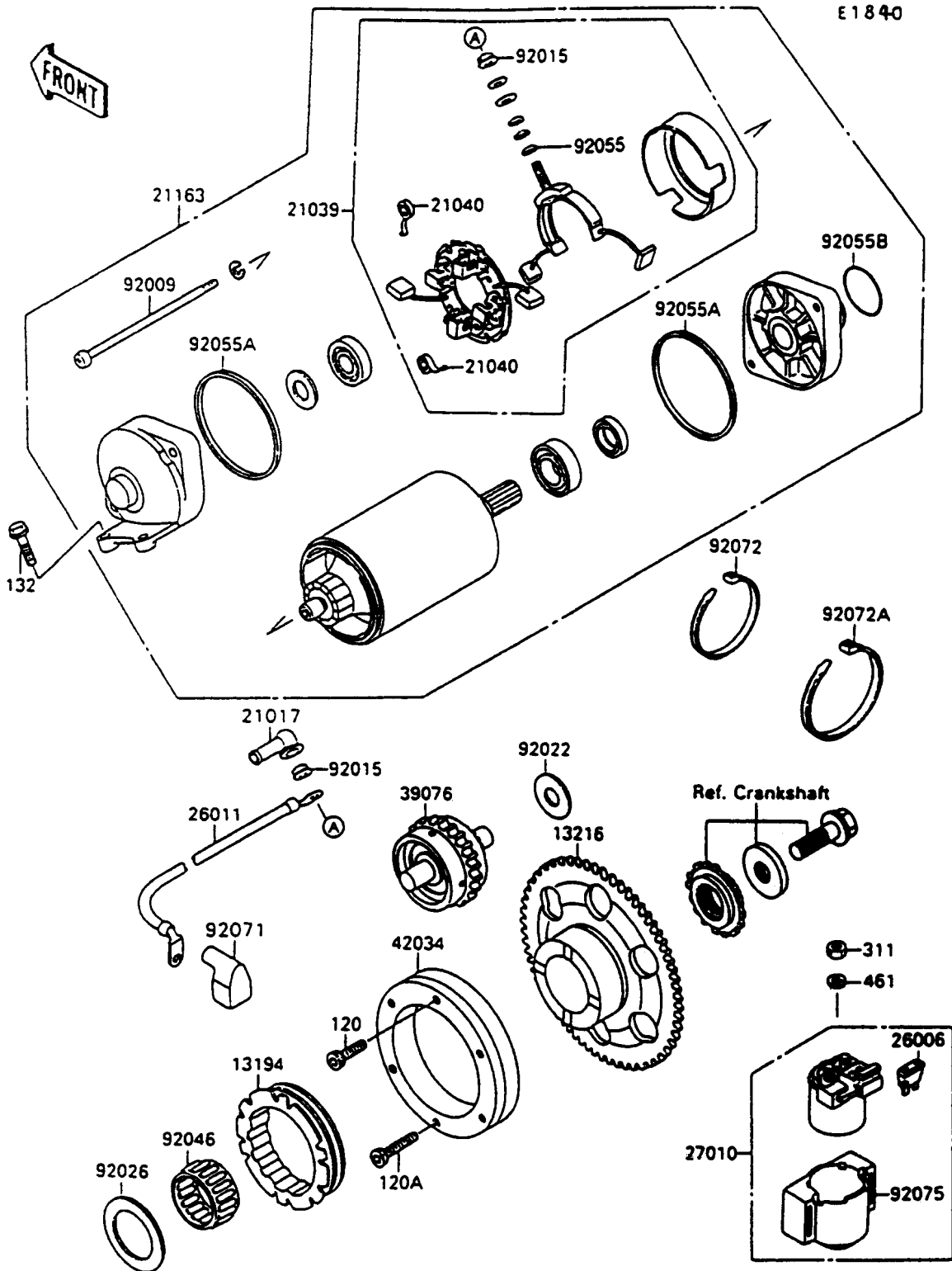


1994 Vulcan 88 PARTS DIAGRAM

Starter Motor



1994 Vulcan 88 PARTS LIST

Starter Motor

ITEM NAME	PART NUMBER	QUANTITY
BOLT-SOCKET,6X20 (Ref # 120)	120S0620	3
BOLT-SOCKET,6X30,BLACK (Ref # 120A)	120S0630	3
BOLT-FLANGED-SMALL (Ref # 132)	132E0625	2
NUT-HEX,6MM (Ref # 311)	311B0600	2
WASHER-SPRING,6MM (Ref # 461)	461F0600	2
CLUTCH-ONEWAY (Ref # 13194)	13194-1088	1
GEAR-COMP,FREE WHEEL (Ref # 13216)	13216-1115	1
GROMMET,STARTER TERMINAL (Ref # 21017)	21017-017	1
BRUSH,CARBON (Ref # 21039)	21039-1060	1
SPRING-BRUSH (Ref # 21040)	21040-1055	4
STARTER-ELECTRIC (Ref # 21163)	21163-1109	1
FUSE,30A-G (Ref # 26006)	26006-1006	1
WIRE-LEAD,STARTER MOTOR (Ref # 26011)	26011-1403	1
SWITCH,MAGNETIC (Ref # 27010)	27010-1213	1
LIMITER,STARTER IDLE GEAR (Ref # 39076)	39076-1057	1
COUPLING (Ref # 42034)	42034-1093	1
SCREW (Ref # 92009)	92009-1443	2
NUT,STARTER MOTOR (Ref # 92015)	92015-1476	2
WASHER,12X27.5X1.0 (Ref # 92022)	92022-1852	1
SPACER (Ref # 92026)	92026-1070	1
BEARING-NEEDLE,K30X35X20 (Ref # 92046)	92046-1171	1
RING-O,4.5X2.0 (Ref # 92055)	92055-1370	1
RING-O,STARTER MOTOR (Ref # 92055A)	92055-1381	2
RING-O,37MM (Ref # 92055B)	92055-1393	1
GROMMET,TERMINAL (Ref # 92071)	92071-1130	1
BAND,L=185 (Ref # 92072)	92072-1195	3
BAND,L=365 (Ref # 92072A)	92072-1197	4
DAMPER,MAGNETIC SWITCH (Ref # 92075)	92075-1863	1