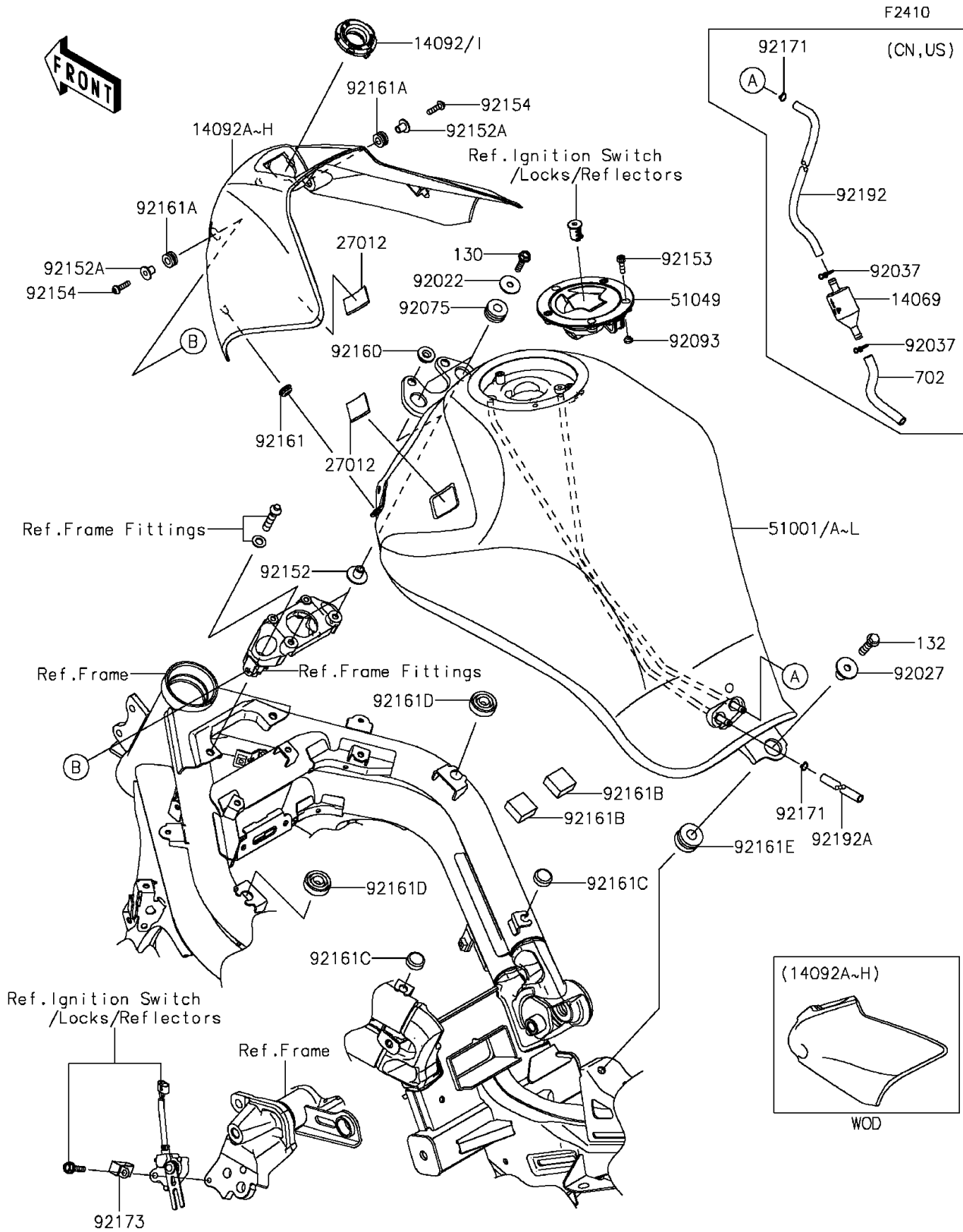


# 2013 NINJA® 650 PARTS DIAGRAM

## Fuel Tank



## 2013 NINJA® 650 PARTS LIST

### Fuel Tank

ITEM NAME	PART NUMBER	QUANTITY
BREATHER,FUEL TANK (Ref # 14069)	14069-1004	1
COVER,TANK,M.S.BLACK (Ref # 14092G)	14092-0731-660	1
COVER,TANK,M.F.S.BLACK (Ref # 14092H)	14092-0731-739	1
COVER,IGNITION SW. (Ref # 14092I)	14092-1033	1
HOOK,DUAL LOCK FASTENER (Ref # 27012)	27012-0717	4
TANK-COMP-FUEL,P.S.WHITE (Ref # 51001B)	51001-0708-15S	1
TANK-COMP-FUEL,M.F.S.BLACK (Ref # 51001C)	51001-0708-15V	1
TANK-COMP-FUEL,C.L.GREEN (Ref # 51001E)	51001-0708-35P	1
TANK-COMP-FUEL,C.T.BLUE (Ref # 51001I)	51001-0708-620	1
CAP-TANK,FUEL (Ref # 51049)	51049-0714	1
WASHER,7X24X1.6 (Ref # 92022)	92022-228	2
COLLAR,L=19.3 (Ref # 92027)	92027-1780	1
CLAMP,TUBE (Ref # 92037)	92037-147	2
DAMPER,10X24X12 (Ref # 92075)	92075-1690	2
SEAL,FUEL TANK CAP (Ref # 92093)	92093-1030	1
COLLAR,6.5X10X13.1 (Ref # 92152)	92152-0910	2
COLLAR,5.6X8X11.2 (Ref # 92152A)	92152-1562	2
BOLT,SOCKET,5X16 (Ref # 92153)	92153-1616	3
BOLT,SOCKET,5X20 (Ref # 92154)	92154-0210	2
DAMPER (Ref # 92160)	92160-1613	2
DAMPER (Ref # 92161)	92161-0631	2
DAMPER,8X16X8.6 (Ref # 92161A)	92161-0685	2
DAMPER,T=13 (Ref # 92161B)	92161-0792	2
DAMPER,10X20X8 (Ref # 92161C)	92161-0855	2
DAMPER,14X30X10 (Ref # 92161D)	92161-1368	2
DAMPER,12X28X17 (Ref # 92161E)	92161-1494	1
CLAMP,8X0.7 (Ref # 92171)	92171-1973	1
CLAMP,8X0.7 (Ref # 92171)	92171-1973	2
CLAMP (Ref # 92173)	92173-0833	1

## 2013 NINJA® 650 PARTS LIST

### Fuel Tank

ITEM NAME	PART NUMBER	QUANTITY
TUBE,6X9X631 (Ref # 92192)	92192-0966	1
TUBE,6X9X800 (Ref # 92192A)	92192-1377	1
BOLT-FLANGED,6X25 (Ref # 130)	130CA0625	2
BOLT-FLANGED-SMALL,8X30 (Ref # 132)	132BA0830	1
TUBE-RUBBER,7X10X100 (Ref # 702)	702A07100	1