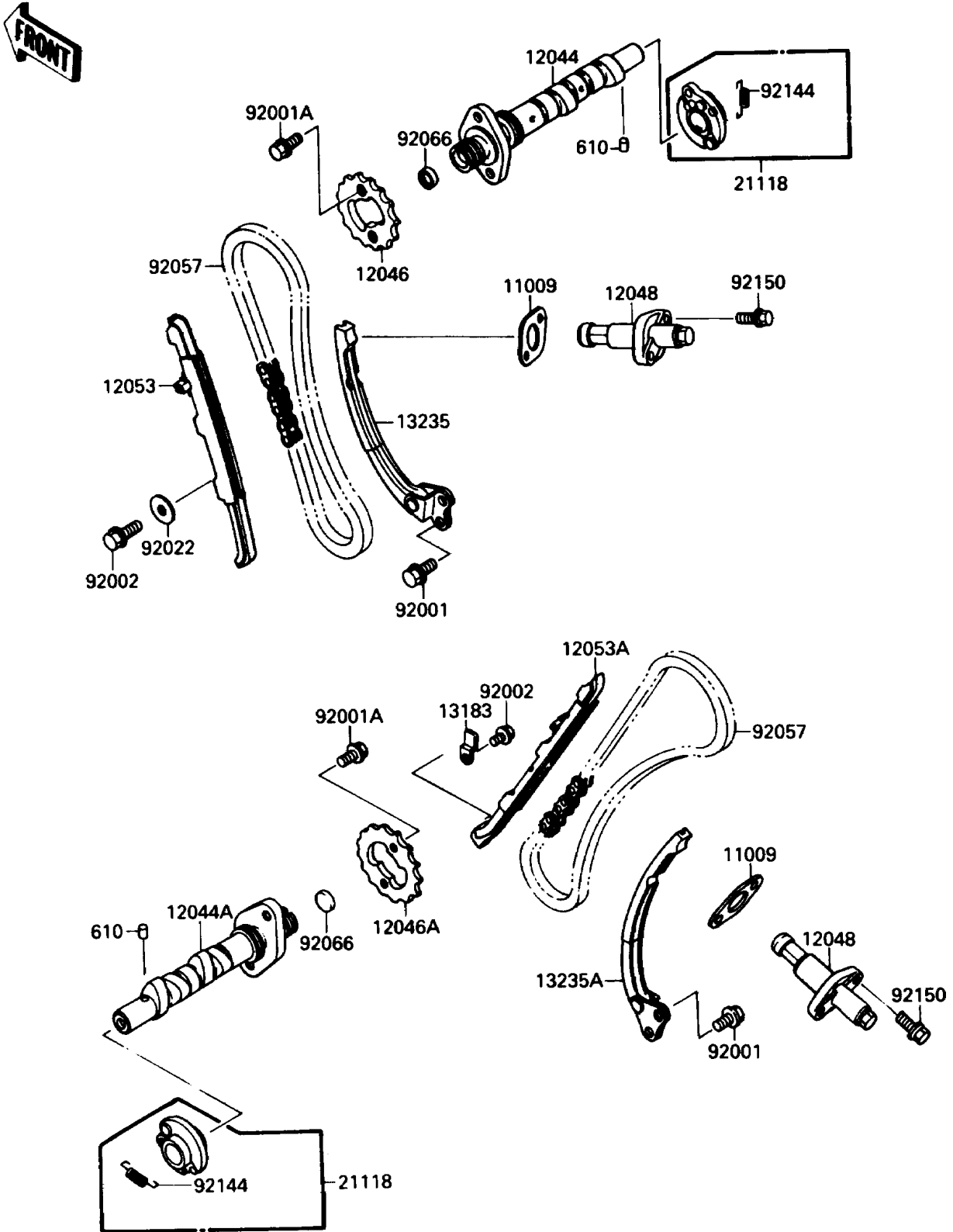


# 1987 Vulcan 88 SE PARTS DIAGRAM

Camshaft(s)/Tensioner

E1230-0064



# 1987 Vulcan 88 SE PARTS LIST

## Camshaft(s)/Tensioner

ITEM NAME	PART NUMBER	QUANTITY
GASKET,TENSIONER (Ref # 11009)	11009-1675	2
CAMSHAFT-VALVE,FR (Ref # 12044)	12044-1200	1
CAMSHAFT-VALVE,RR (Ref # 12044A)	12044-1201	1
SPROCKET,CAMSHAFT,FR (Ref # 12046)	12046-1105	1
SPROCKET,CAMSHAFT,RR (Ref # 12046A)	12046-1106	1
TENSIONER-ASSY (Ref # 12048)	12048-1088	2
GUIDE-CHAIN,FR,TENSIONER (Ref # 12053)	12053-1219	1
GUIDE-CHAIN,RR,TENSIONER (Ref # 12053A)	12053-1221	1
PLATE (Ref # 13183)	13183-1096	1
GUIDE-COMP (Ref # 13235)	13235-1060	1
GUIDE-COMP (Ref # 13235A)	13235-1061	1
DECOMPRESSOR (Ref # 21118)	21118-1061	2
BOLT,6X16 (Ref # 92001)	92001-1457	4
BOLT,FLANGED,6X11 (Ref # 92001A)	92003-208	4
BOLT,6X12 (Ref # 92002)	92002-1563	2
WASHER,7X27X1.6 (Ref # 92022)	92022-227	1
CHAIN,CAM,82RH2010-144L (Ref # 92057)	92057-1234	2
PLUG (Ref # 92066)	92066-1198	2
SPRING,DECOMPRESSOR (Ref # 92144)	92144-1209	2
BOLT,6X20 (Ref # 92150)	92150-1056	4
ROLLER,4X6 (Ref # 610)	610A0406	2