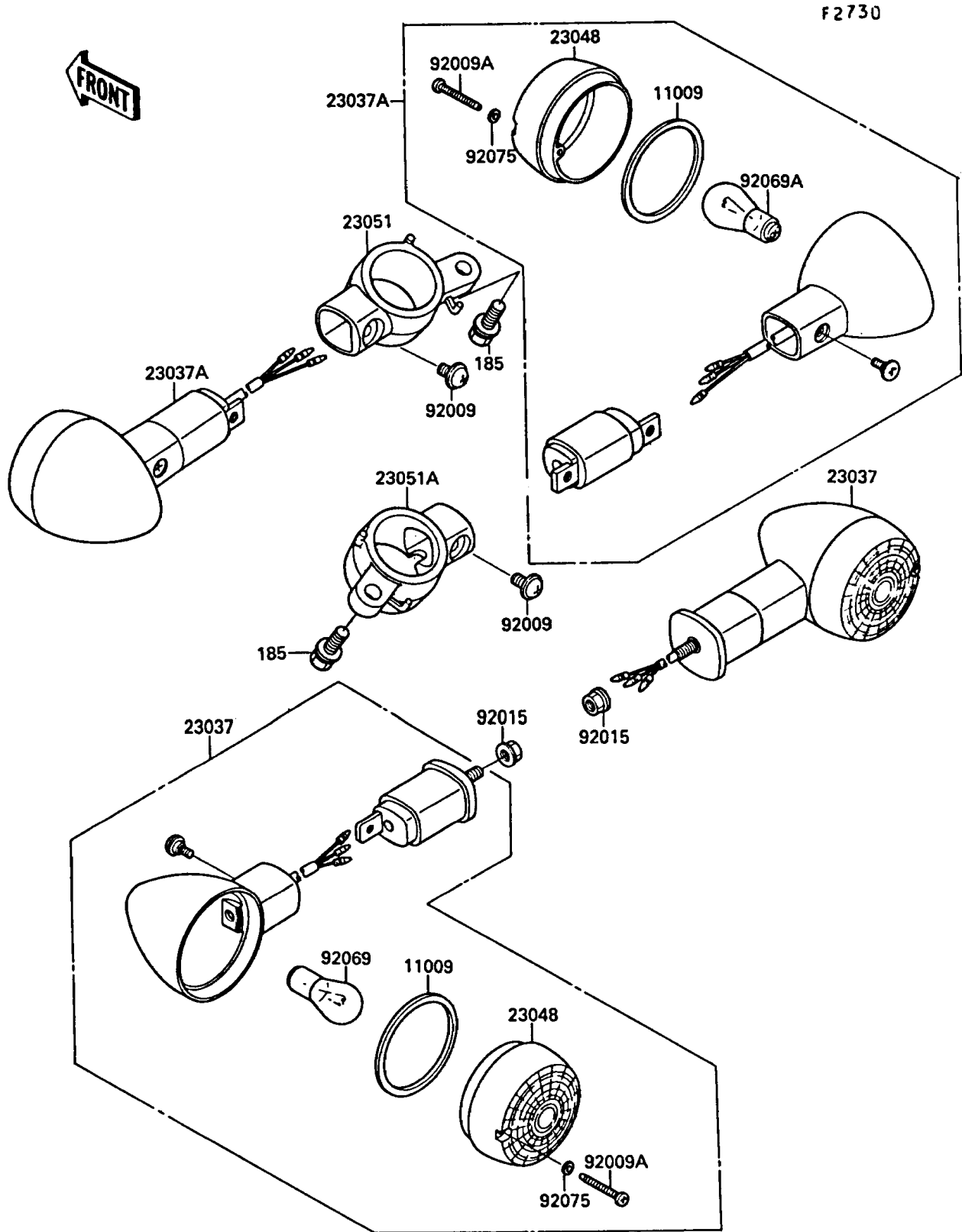


1989 Vulcan 88 SE PARTS DIAGRAM

Turn Signals



1989 Vulcan 88 SE PARTS LIST

Turn Signals

| ITEM NAME | PART NUMBER | QUANTITY |
|--|-------------|----------|
| GASKET,SIGNAL LAMP LENS (Ref # 11009) | 11009-1661 | 4 |
| LAMP-ASSY-SIGNAL,RR (Ref # 23037) | 23037-1244 | 2 |
| LAMP-ASSY-SIGNAL,FR (Ref # 23037A) | 23037-1245 | 2 |
| LENS-SIGNAL LAMP (Ref # 23048) | 23048-1078 | 4 |
| BRACKET-SIGNAL LAMP,FR,LH (Ref # 23051) | 23051-1194 | 1 |
| BRACKET-SIGNAL LAMP,FR,RH (Ref # 23051A) | 23051-1195 | 1 |
| SCREW,6X8 (Ref # 92009) | 92009-1294 | 2 |
| SCREW,TAPPING,4X40 (Ref # 92009A) | 92009-1468 | 4 |
| NUT,FLANGED,10MM (Ref # 92015) | 92015-1428 | 2 |
| BULB,12V 32CP(23W) (Ref # 92069) | 92069-055 | 2 |
| BULB,12V 32/3CP(23/8W) (Ref # 92069A) | 92069-060 | 2 |
| WASHER,PLAIN,4MM (Ref # 92075) | 23058-002 | 4 |
| BOLT-UPSET-WSP-SMALL,8X22 (Ref # 185) | 185N0822 | 2 |