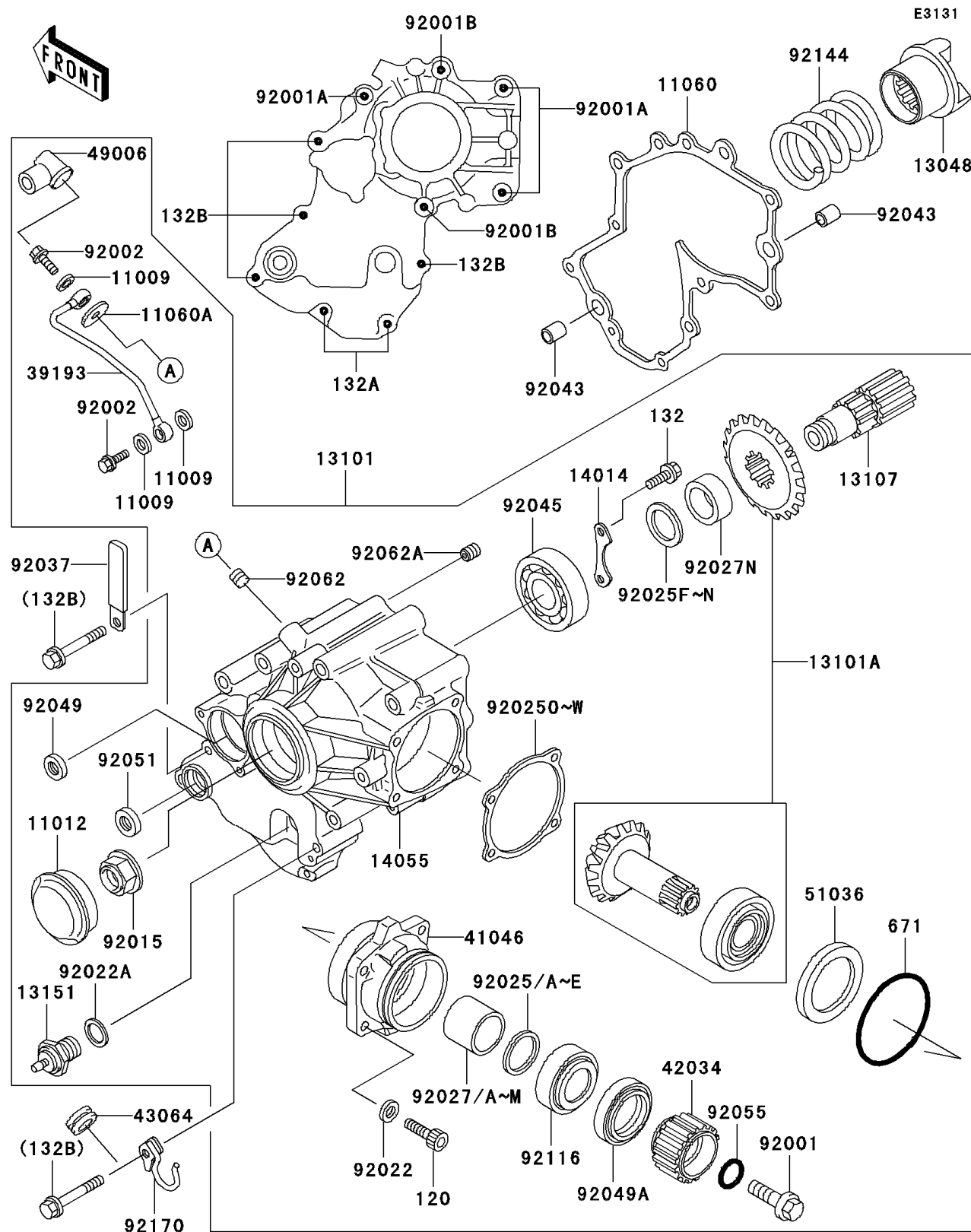


1997 Vulcan 1500 Classic PARTS DIAGRAM

Front Bevel Gear



1997 Vulcan 1500 Classic PARTS LIST

Front Bevel Gear

| ITEM NAME | PART NUMBER | QUANTITY |
|---|-------------|----------|
| GASKET,OIL PIPE,8.2X14X1.0 (Ref # 11009) | 11009-1344 | 3 |
| CAP (Ref # 11012) | 11012-1071 | 1 |
| GASKET,GEAR CASE (Ref # 11060) | 11060-1120 | 1 |
| GASKET,OIL PIPE,8.2X25X1.0 (Ref # 11060A) | 11060-1872 | 1 |
| CAM-DAMPER (Ref # 13048) | 13048-1074 | 1 |
| GEAR-ASSY,BEVEL,FR (Ref # 13101) | 13101-1240 | 1 |
| GEAR-ASSY,BEVEL,FR (Ref # 13101A) | 13101-5065 | 1 |
| SHAFT,BEVEL,FR (Ref # 13107) | 13107-1263 | 1 |
| SWITCH-COMP (Ref # 13151) | 13151-1010 | 1 |
| PLATE-POSITION (Ref # 14014) | 14014-1084 | 1 |
| CASE-GEAR (Ref # 14055) | 14055-1130 | 1 |
| PIPE-OIL (Ref # 39193) | 39193-1026 | 1 |
| HOUSING-BEARING (Ref # 41046) | 41046-1099 | 1 |
| COUPLING,FR DRIVEN (Ref # 42034) | 42034-1091 | 1 |
| GROMMET,HOSE CLAMP (Ref # 43064) | 43064-006 | 1 |
| BOOT,DUST (Ref # 49006) | 49006-1040 | 1 |
| CUP (Ref # 51036) | 51036-1002 | 1 |
| BOLT,FLANGED,12X42 (Ref # 92001) | 92001-1169 | 1 |
| BOLT,8X90 (Ref # 92001A) | 92001-1480 | 3 |
| BOLT,FLANGED,8X110 (Ref # 92001B) | 92001-1597 | 2 |
| BOLT,BANJO,8X20 (Ref # 92002) | 92002-1429 | 2 |
| NUT,24MM (Ref # 92015) | 92015-1554 | 1 |
| WASHER,8.5X13X1 (Ref # 92022) | 92022-1028 | 4 |
| WASHER (Ref # 92022A) | 92022-1211 | 1 |
| SHIM,25.2X29.8X1.70 (Ref # 92025) | 92025-1072 | AR |
| SHIM,25.2X29.8X1.72 (Ref # 92025A) | 92025-1073 | AR |
| SHIM,25.2X29.8X1.74 (Ref # 92025B) | 92025-1074 | AR |
| SHIM,25.2X29.8X1.76 (Ref # 92025C) | 92025-1075 | AR |
| SHIM,25.2X29.8X1.78 (Ref # 92025D) | 92025-1076 | AR |

1997 Vulcan 1500 Classic PARTS LIST

Front Bevel Gear

| ITEM NAME | PART NUMBER | QUANTITY |
|--------------------------------------|-------------|----------|
| SHIM,25.2X29.8X1.80 (Ref # 92025E) | 92025-1077 | AR |
| SHIM,25.3X36X0.15 (Ref # 92025F) | 92025-1688 | AR |
| SHIM,25.3X36X0.50 (Ref # 92025G) | 92025-1689 | AR |
| SHIM,25.3X36X0.60 (Ref # 92025H) | 92025-1690 | AR |
| SHIM,25.3X36X0.70 (Ref # 92025I) | 92025-1691 | AR |
| SHIM,25.3X36X0.80 (Ref # 92025J) | 92025-1692 | AR |
| SHIM,25.3X36X0.90 (Ref # 92025K) | 92025-1693 | AR |
| SHIM,25.3X36X1.00 (Ref # 92025L) | 92025-1694 | AR |
| SHIM,25.3X36X1.10 (Ref # 92025M) | 92025-1695 | AR |
| SHIM,25.3X36X1.20 (Ref # 92025N) | 92025-1696 | AR |
| SHIM,T=0.15 (Ref # 92025O) | 92025-1818 | AR |
| BOLT-SOCKET,8X30,BLACK (Ref # 120) | 120S0830 | 4 |
| BOLT-FLANGED-SMALL (Ref # 132) | 132G0616 | 2 |
| BOLT-FLANGED-SMALL (Ref # 132A) | 132J0630 | 2 |
| BOLT-FLANGED-SMALL,6X55 (Ref # 132B) | 132J0655 | 4 |
| O RING,65MM (Ref # 671) | 671B2565 | 1 |
| SHIM,T=0.50 (Ref # 92025P) | 92025-1819 | AR |
| SHIM,T=0.60 (Ref # 92025Q) | 92025-1820 | AR |
| SHIM,T=0.70 (Ref # 92025R) | 92025-1821 | AR |
| SHIM,T=0.80 (Ref # 92025S) | 92025-1822 | AR |
| SHIM,T=0.90 (Ref # 92025T) | 92025-1823 | AR |
| SHIM,T=1.00 (Ref # 92025U) | 92025-1824 | AR |
| SHIM,T=1.20 (Ref # 92025V) | 92025-1825 | AR |
| SHIM,T=0.10 (Ref # 92025W) | 92025-1826 | AR |
| COLLAR,25.2X29.8X22.8 (Ref # 92027) | 92027-1152 | AR |
| COLLAR,25.2X29.8X22.9 (Ref # 92027A) | 92027-1153 | AR |
| COLLAR,25.2X29.8X23 (Ref # 92027B) | 92027-1154 | AR |
| COLLAR,25.2X29.8X23.1 (Ref # 92027C) | 92027-1155 | AR |
| COLLAR,25.2X29.8X23.2 (Ref # 92027D) | 92027-1156 | AR |

1997 Vulcan 1500 Classic PARTS LIST

Front Bevel Gear

| ITEM NAME | PART NUMBER | QUANTITY |
|--|-------------|----------|
| COLLAR,25.2X29.8X23.3 (Ref # 92027E) | 92027-1157 | AR |
| COLLAR,25.2X29.8X23.4 (Ref # 92027F) | 92027-1158 | AR |
| COLLAR,25.2X29.8X23.5 (Ref # 92027G) | 92027-1159 | AR |
| COLLAR,25.2X29.8X23.6 (Ref # 92027H) | 92027-1160 | AR |
| COLLAR,25.2X29.8X23.7 (Ref # 92027I) | 92027-1161 | AR |
| COLLAR,25.2X29.8X23.8 (Ref # 92027J) | 92027-1162 | AR |
| COLLAR,25.2X29.8X23.9 (Ref # 92027K) | 92027-1163 | AR |
| COLLAR,25.2X29.8X24 (Ref # 92027L) | 92027-1164 | AR |
| COLLAR,25.2X29.8X24.1 (Ref # 92027M) | 92027-1165 | AR |
| COLLAR,25.3X36X10 (Ref # 92027N) | 92027-1968 | 1 |
| CLAMP,WIRING HARNESS,L=60 (Ref # 92037) | 92037-1069 | 1 |
| PIN,11.5X14X14 (Ref # 92043) | 92043-1279 | 2 |
| BEARING-BALL,6305C2 (Ref # 92045) | 92045-1165 | 1 |
| SEAL-OIL,SD-8187 (Ref # 92049) | 92049-1017 | 1 |
| SEAL-OIL,TC35527 (Ref # 92049A) | 92049-1038 | 1 |
| SEAL-OIL,TB13225.5 (Ref # 92051) | 92051-005 | 1 |
| RING-O,ID=18.64 (Ref # 92055) | 92055-1044 | 1 |
| NOZZLE,6X8,GREEN (Ref # 92062) | 92062-1078 | 1 |
| NOZZLE,10X10,SILVER (Ref # 92062A) | 92062-1083 | 1 |
| BEARING-ROLLER,HI-CAP30205 (Ref # 92116) | 92116-1062 | 1 |
| SPRING,CAM DAMPER (Ref # 92144) | 92144-1933 | 1 |
| CLAMP (Ref # 92170) | 92170-1732 | 1 |