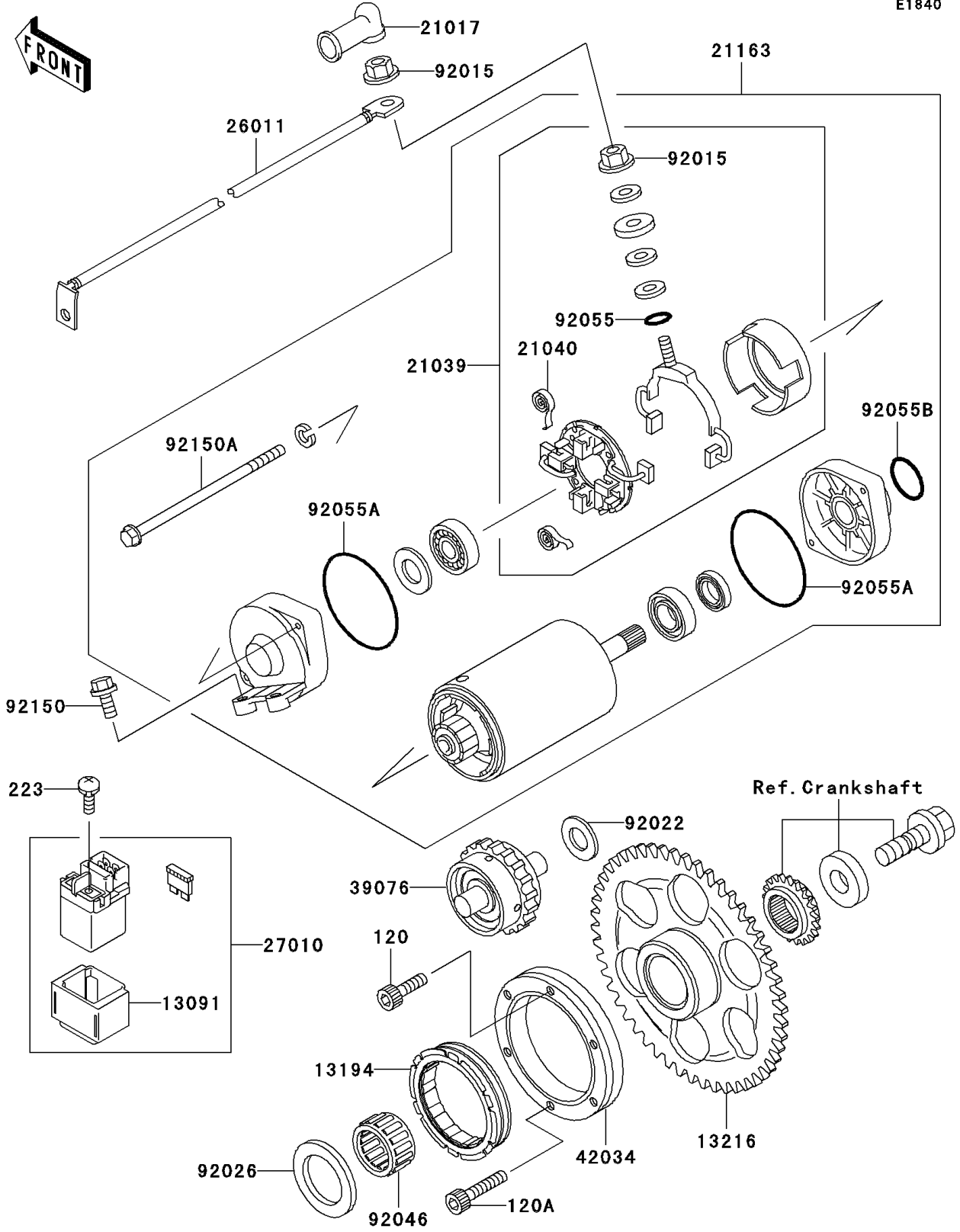


# 2001 Vulcan 1500 Classic PARTS DIAGRAM

Starter Motor

E1840



## 2001 Vulcan 1500 Classic PARTS LIST

### Starter Motor

| ITEM NAME                               | PART NUMBER | QUANTITY |
|---|-------------|----------|
| BOLT-SOCKET (Ref # 120)                 | 120S0620    | 3        |
| BOLT-SOCKET (Ref # 120A)                | 120S0630    | 3        |
| SCREW-PAN-WS-CROS (Ref # 223)           | 223D0510    | 2        |
| HOLDER,SWITCH (Ref # 13091)             | 13091-1883  | 1        |
| CLUTCH-ONEWAY (Ref # 13194)             | 13194-1088  | 1        |
| GEAR-COMP,FREE WHEEL (Ref # 13216)      | 13216-1115  | 1        |
| GROMMET,STARTER TERMINAL (Ref # 21017)  | 21017-017   | 1        |
| BRUSH,CARBON (Ref # 21039)              | 21039-1060  | 1        |
| SPRING-BRUSH (Ref # 21040)              | 21040-1055  | 4        |
| STARTER-ELECTRIC (Ref # 21163)          | 21163-1271  | 1        |
| WIRE-LEAD,STARTER (Ref # 26011)         | 26011-1639  | 1        |
| SWITCH,MAGNETIC (Ref # 27010)           | 27010-1347  | 1        |
| LIMITER,STARTER IDLE GEAR (Ref # 39076) | 39076-1057  | 1        |
| COUPLING (Ref # 42034)                  | 42034-1093  | 1        |
| NUT,STARTER MOTOR (Ref # 92015)         | 92015-1476  | 2        |
| WASHER,12X27.5X1.0 (Ref # 92022)        | 92022-1852  | 1        |
| SPACER,31X49.5X1.2 (Ref # 92026)        | 92026-1490  | 1        |
| BEARING-NEEDLE,K30X35X20 (Ref # 92046)  | 92046-1171  | 1        |
| RING-O,4.5X2.0 (Ref # 92055)            | 92055-1370  | 1        |
| RING-O,STARTER MOTOR (Ref # 92055A)     | 92055-1381  | 2        |
| RING-O,37MM (Ref # 92055B)              | 92055-1393  | 1        |
| BOLT,6X25 (Ref # 92150)                 | 92150-1779  | 2        |
| BOLT,STARTER MOTOR (Ref # 92150A)       | 92150-1913  | 2        |