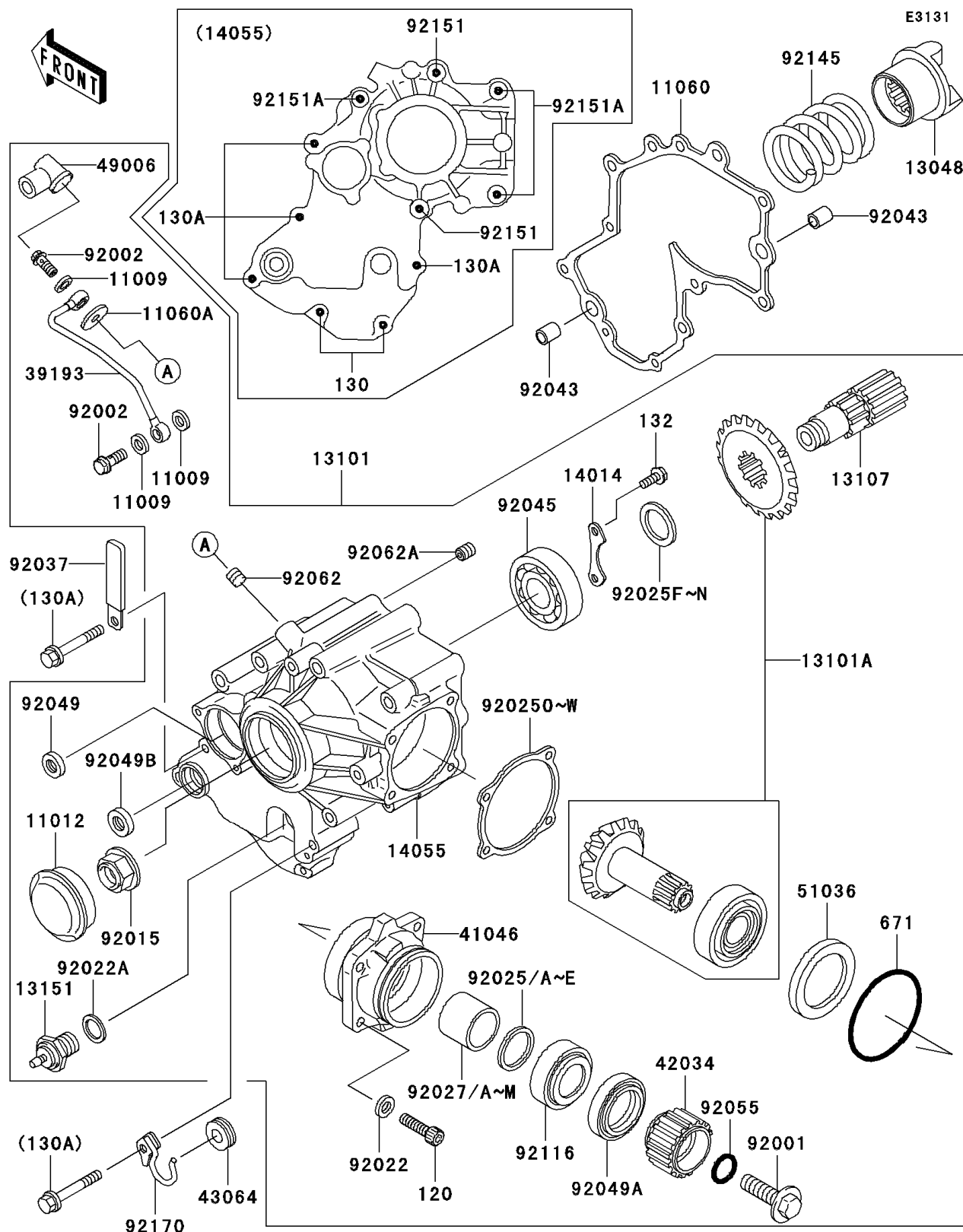


2003 Vulcan 1500 Classic PARTS DIAGRAM

Front Bevel Gear



2003 Vulcan 1500 Classic PARTS LIST

Front Bevel Gear

ITEM NAME	PART NUMBER	QUANTITY
GASKET,8.2X14X1.0 (Ref # 11009)	11009-1344	3
CAP (Ref # 11012)	11012-1071	1
GASKET,BEVEL GEAR CASE (Ref # 11060)	11060-1829	1
GASKET,OIL PIPE,8.2X25X1.0 (Ref # 11060A)	11060-1872	1
CAM-DAMPER (Ref # 13048)	13048-1085	1
GEAR-ASSY (Ref # 13101)	13101-1308	1
GEAR-ASSY,BEVEL,FR (Ref # 13101A)	13101-5085	1
SHAFT,BEVEL,FR (Ref # 13107)	13107-1380	1
SWITCH-COMP (Ref # 13151)	13151-1010	1
PLATE-POSITION (Ref # 14014)	14014-1136	1
CASE-GEAR,FRONT BEVEL (Ref # 14055)	14055-1143	1
PIPE-OIL (Ref # 39193)	39193-1026	1
HOUSING-BEARING (Ref # 41046)	41046-1099	1
COUPLING,FR DRIVEN (Ref # 42034)	42034-1091	1
GROMMET,HOSE CLAMP (Ref # 43064)	43064-006	1
BOOT,DUST (Ref # 49006)	49006-1040	1
CUP (Ref # 51036)	51036-1002	1
BOLT,FLANGED,12X42 (Ref # 92001)	92001-1169	1
BOLT,8X20 (Ref # 92002)	92002-1429	2
NUT,24MM (Ref # 92015)	92015-1554	1
WASHER,8.5X13X1 (Ref # 92022)	92022-1028	4
WASHER (Ref # 92022A)	92022-1211	1
SHIM,25.2X29.8X1.70 (Ref # 92025)	92025-1072	AR
SHIM,25.2X29.8X1.72 (Ref # 92025A)	92025-1073	AR
SHIM,25.2X29.8X1.74 (Ref # 92025B)	92025-1074	AR
SHIM,25.2X29.8X1.76 (Ref # 92025C)	92025-1075	AR
SHIM,25.2X29.8X1.78 (Ref # 92025D)	92025-1076	AR
SHIM,25.2X29.8X1.80 (Ref # 92025E)	92025-1077	AR
SHIM,25.3X36X0.15 (Ref # 92025F)	92025-1688	AR

2003 Vulcan 1500 Classic PARTS LIST

Front Bevel Gear

ITEM NAME	PART NUMBER	QUANTITY
SHIM,25.3X36X0.50 (Ref # 92025G)	92025-1689	AR
SHIM,25.3X36X0.60 (Ref # 92025H)	92025-1690	AR
SHIM,25.3X36X0.70 (Ref # 92025I)	92025-1691	AR
SHIM,25.3X36X0.80 (Ref # 92025J)	92025-1692	AR
SHIM,25.3X36X0.90 (Ref # 92025K)	92025-1693	AR
SHIM,25.3X36X1.00 (Ref # 92025L)	92025-1694	AR
SHIM,25.3X36X1.10 (Ref # 92025M)	92025-1695	AR
SHIM,25.3X36X1.20 (Ref # 92025N)	92025-1696	AR
SHIM,T=0.15 (Ref # 92025O)	92025-1818	AR
SHIM,T=0.50 (Ref # 92025P)	92025-1819	AR
SHIM,T=0.60 (Ref # 92025Q)	92025-1820	AR
BOLT-SOCKET,8X30,BLACK (Ref # 120)	120S0830	4
BOLT-FLANGED (Ref # 130)	130S0630	2
BOLT-FLANGED (Ref # 130A)	130S0640	4
BOLT-FLANGED-SMALL (Ref # 132)	132G0616	2
O RING,65MM (Ref # 671)	671B2565	1
SHIM,T=0.70 (Ref # 92025R)	92025-1821	AR
SHIM,T=0.80 (Ref # 92025S)	92025-1822	AR
SHIM,T=0.90 (Ref # 92025T)	92025-1823	AR
SHIM,T=1.00 (Ref # 92025U)	92025-1824	AR
SHIM,T=1.20 (Ref # 92025V)	92025-1825	AR
SHIM,T=0.10 (Ref # 92025W)	92025-1826	AR
COLLAR,25.2X29.8X22.8 (Ref # 92027)	92027-1152	AR
COLLAR,25.2X29.8X22.9 (Ref # 92027A)	92027-1153	AR
COLLAR,25.2X29.8X23 (Ref # 92027B)	92027-1154	AR
COLLAR,25.2X29.8X23.1 (Ref # 92027C)	92027-1155	AR
COLLAR,25.2X29.8X23.2 (Ref # 92027D)	92027-1156	AR
COLLAR,25.2X29.8X23.3 (Ref # 92027E)	92027-1157	AR
COLLAR,25.2X29.8X23.4 (Ref # 92027F)	92027-1158	AR

2003 Vulcan 1500 Classic PARTS LIST

Front Bevel Gear

ITEM NAME	PART NUMBER	QUANTITY
COLLAR,25.2X29.8X23.5 (Ref # 92027G)	92027-1159	AR
COLLAR,25.2X29.8X23.6 (Ref # 92027H)	92027-1160	AR
COLLAR,25.2X29.8X23.7 (Ref # 92027I)	92027-1161	AR
COLLAR,25.2X29.8X23.8 (Ref # 92027J)	92027-1162	AR
COLLAR,25.2X29.8X23.9 (Ref # 92027K)	92027-1163	AR
COLLAR,25.2X29.8X24 (Ref # 92027L)	92027-1164	AR
COLLAR,25.2X29.8X24.1 (Ref # 92027M)	92027-1165	AR
CLAMP,L=60 (Ref # 92037)	92037-1069	1
PIN,11.5X14X14 (Ref # 92043)	92043-1279	2
BEARING-BALL,6305C2 (Ref # 92045)	92045-1165	1
SEAL-OIL,SD-8187 (Ref # 92049)	92049-1017	1
SEAL-OIL,TC35527 (Ref # 92049A)	92049-1038	1
SEAL-OIL,TC13225.5 (Ref # 92049B)	92049-1519	1
RING-O,ID=18.64 (Ref # 92055)	92055-1044	1
NOZZLE,6X8,GREEN (Ref # 92062)	92062-1078	1
NOZZLE,10X10,SILVER (Ref # 92062A)	92062-1083	1
BEARING-ROLLER,HI-CAP30205 (Ref # 92116)	92116-1062	1
SPRING,CAM DAMPER (Ref # 92145)	92145-1102	1
BOLT,8X95 (Ref # 92151)	92151-1444	2
BOLT,8X80 (Ref # 92151A)	92151-1445	3
CLAMP (Ref # 92170)	92170-1732	1