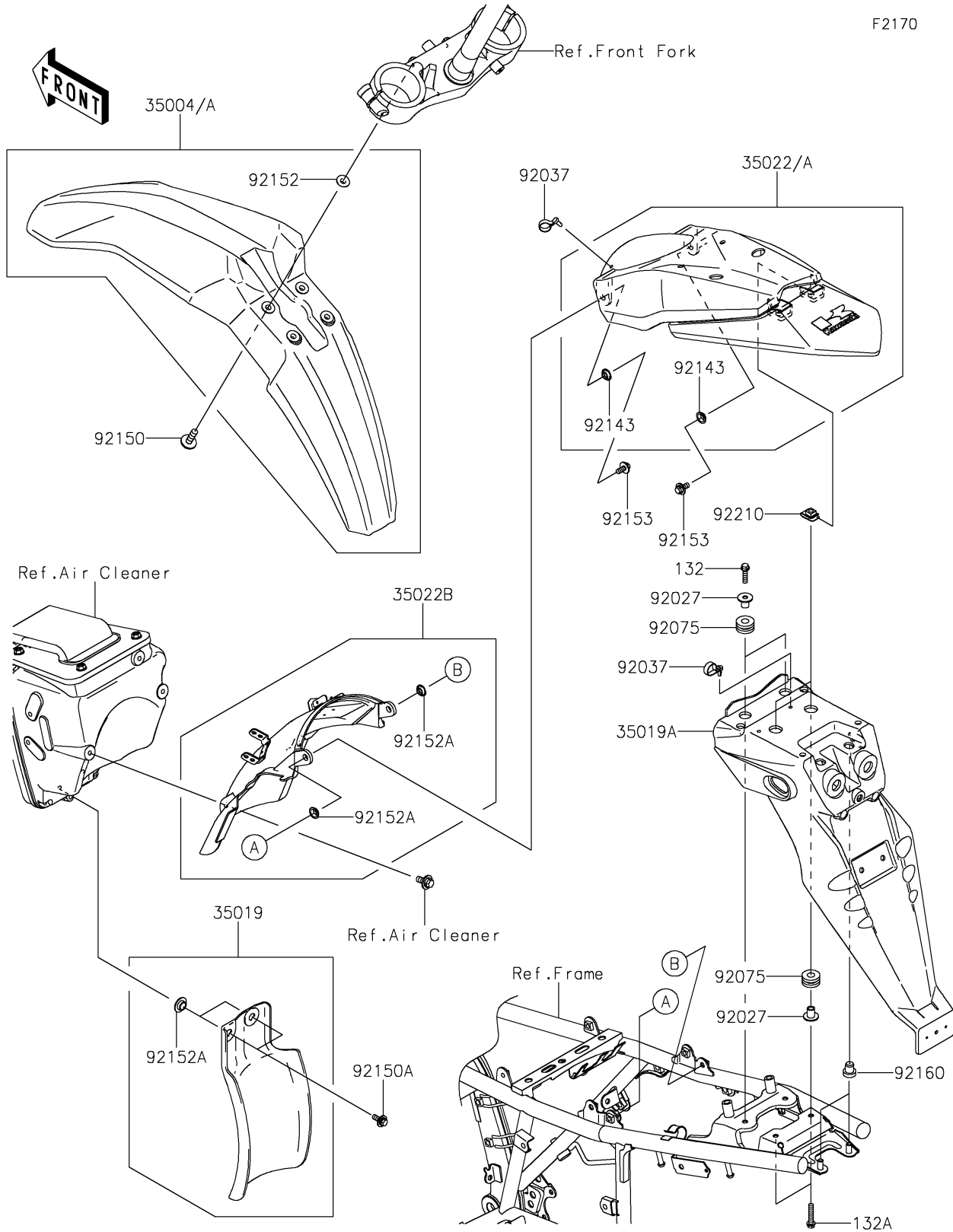


2018 KLX® 250 CAMO PARTS DIAGRAM

Fenders

F2170



2018 KLX® 250 CAMO PARTS LIST

Fenders

| ITEM NAME | PART NUMBER | QUANTITY |
|--|---------------|----------|
| FENDER-FRONT,EBONY (Ref # 35004A) | 35004-0080-6C | 1 |
| FLAP,RR FENDER,FR (Ref # 35019) | 35019-0004 | 1 |
| FLAP,RR (Ref # 35019A) | 35019-0056 | 1 |
| FENDER-COMP-REAR,RR,EBONY (Ref # 35022A) | 35022-0039-6C | 1 |
| FENDER-COMP-REAR,FR (Ref # 35022B) | 35022-0058 | 1 |
| COLLAR,6.5X10X14.1 (Ref # 92027) | 92027-1183 | 4 |
| CLAMP,SPEED,L=58 (Ref # 92037) | 92037-1163 | 2 |
| DAMPER,10X24X12 (Ref # 92075) | 92075-1690 | 4 |
| COLLAR (Ref # 92143) | 92143-1196 | 2 |
| BOLT,FLANGED,6X20 (Ref # 92150) | 92150-1339 | 4 |
| BOLT,FLANGED,6X16 (Ref # 92150A) | 92150-1506 | 2 |
| COLLAR (Ref # 92152) | 92152-0427 | 4 |
| COLLAR,8.8X11.2X4 (Ref # 92152A) | 92152-0909 | 4 |
| BOLT,6X20 (Ref # 92153) | 92153-0502 | 2 |
| DAMPER (Ref # 92160) | 92160-1303 | 2 |
| NUT,6MM (Ref # 92210) | 92210-0474 | 2 |
| BOLT-FLANGED-SMALL,6X22 (Ref # 132) | 132BB0622 | 2 |
| BOLT-FLANGED-SMALL,6X30 (Ref # 132A) | 132BB0630 | 2 |