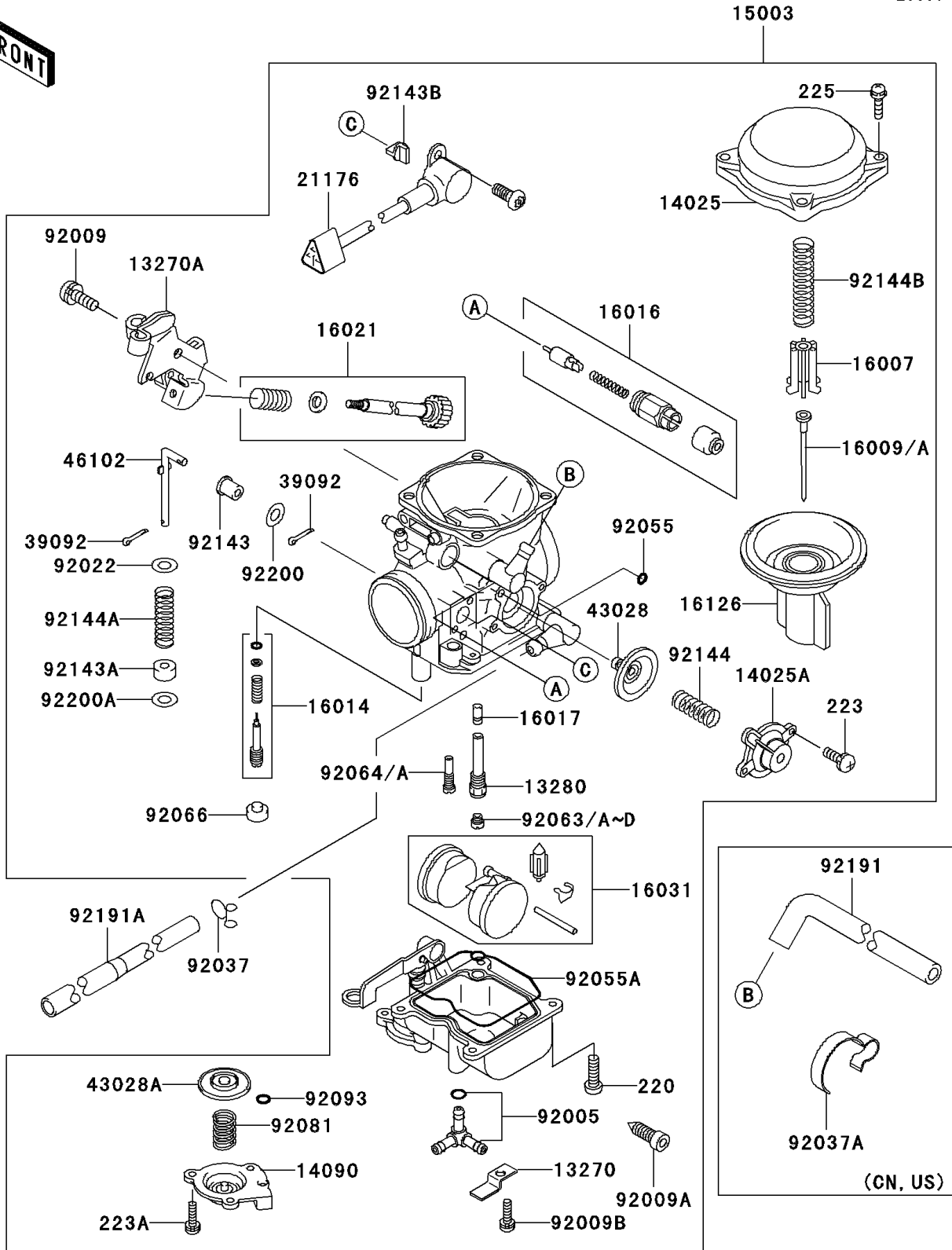


# 2004 Vulcan 1500 Classic PARTS DIAGRAM

Carburetor

E1611



## 2004 Vulcan 1500 Classic PARTS LIST

### Carburetor

ITEM NAME	PART NUMBER	QUANTITY
PLATE,FITTING STAY (Ref # 13270)	13270-1286	1
PLATE (Ref # 13270A)	13270-1513	1
HOLDER,NEEDLE JET (Ref # 13280)	13280-1087	1
COVER,MIXING CHAMBER (Ref # 14025)	14025-1890	1
COVER,AIR CUT VALVE (Ref # 14025A)	14025-1903	1
COVER,ACCELERATOR (Ref # 14090)	14090-1635	1
CARBURETOR-ASSY (Ref # 15003)	15003-1380	1
SEAT-SPRING,DIAPHRAGM VALVE (Ref # 16007)	16007-1113	1
NEEDLE-JET,N2PY (Ref # 16009)	16009-1941	1
NEEDLE-JET,N5AM (Ref # 16009A)	16009-1995	1
SCREW-PILOT AIR (Ref # 16014)	16014-1082	1
PLUNGER (Ref # 16016)	16016-1087	1
JET-NEEDLE,01B38 (Ref # 16017)	16017-1276	1
SCREW-THROTTLE STOP (Ref # 16021)	16021-1219	1
FLOAT (Ref # 16031)	16031-1090	1
VALVE,VACUUM (Ref # 16126)	16126-1325	1
SENSOR (Ref # 21176)	21176-1078	1
PIN-HAIR (Ref # 39092)	39092-1058	2
DIAPHRAGM,5.9MM,AIR CUT VALVE (Ref # 43028)	43028-1053	1
DIAPHRAGM (Ref # 43028A)	43028-1077	1
ROD,ACCELERATOR PUMP (Ref # 46102)	46102-1400	1
FITTING (Ref # 92005)	92005-1350	1
SCREW,5X10 (Ref # 92009)	92009-1365	1
SCREW,DRAIN,M6X0.75 (Ref # 92009A)	92009-1551	1
SCREW,4X8 (Ref # 92009B)	92009-1704	1
WASHER,PLAIN,STOP SPRING (Ref # 92022)	92022-1480	1
CLAMP,TUBE (Ref # 92037)	92037-1531	1
RING-O (Ref # 92055)	92055-1245	1
RING-O,FLOAT CHAMBER (Ref # 92055A)	92055-1518	1

## 2004 Vulcan 1500 Classic PARTS LIST

### Carburetor

ITEM NAME	PART NUMBER	QUANTITY
JET-MAIN,#140 (Ref # 92063)	92063-1013	1
JET-MAIN,#135 (Ref # 92063A)	92063-1014	1
JET-MAIN,#138 (Ref # 92063B)	92063-1015	1
JET-MAIN,#142 (Ref # 92063C)	92063-1016	1
JET-MAIN,#132 (Ref # 92063D)	92063-1076	1
SCREW-PAN-CROS (Ref # 220)	220D0414	4
SCREW-PAN-WS-CROS (Ref # 223)	223D0408	2
SCREW-PAN-WS-CROS (Ref # 223A)	223D0410	3
SCREW-PAN-WSP-CROS (Ref # 225)	225C0418	4
JET-PILOT,#45 (Ref # 92064)	92064-1177	1
JET-PILOT,#42 (Ref # 92064A)	92064-1194	1
PLUG,PILOT AIR SCREW,6.9X2 (Ref # 92066)	92066-1051	1
SPRING,DIAPHRAGM (Ref # 92081)	92081-1092	1
SEAL,"U"RING (Ref # 92093)	92093-1046	1
COLLAR (Ref # 92143)	92143-1790	1
COLLAR (Ref # 92143A)	92143-1791	1
COLLAR (Ref # 92143B)	92143-1907	1
SPRING (Ref # 92144)	92144-1885	1
SPRING (Ref # 92144A)	92144-1886	1
SPRING,VACUUM VALVE (Ref # 92144B)	92144-1947	1
TUBE,FUEL (Ref # 92191A)	92191-1261	1
WASHER (Ref # 92200)	92200-1274	1
WASHER (Ref # 92200A)	92200-1275	1
CLAMP,HOSE (Ref # 92037A)	92037-1552	1
TUBE,AIR VENT (Ref # 92191)	92191-1090	1