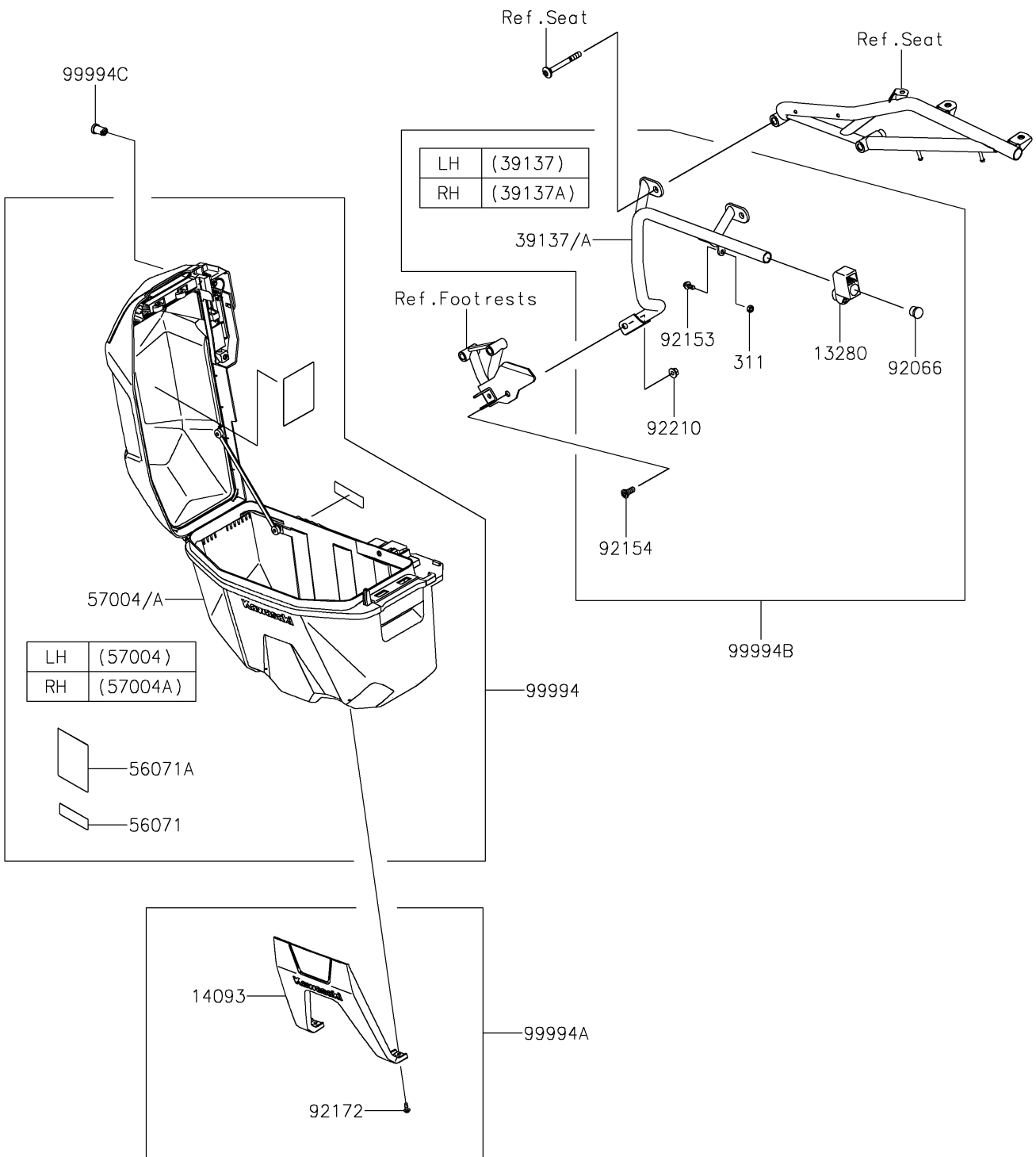


# 2022 KLR® 650 PARTS DIAGRAM

Accessory(Pannier Case)

F2910E



99994C

Ref. Seat

Ref. Seat

LH	(39137)
RH	(39137A)

39137/A

Ref. Footrests

92153

311

13280

92066

92210

92154

99994B

57004/A

LH	(57004)
RH	(57004A)

56071A

56071

99994

14093

99994A

92172

## 2022 KLR® 650 PARTS LIST

Accessory(Pannier Case)

ITEM NAME	PART NUMBER	QUANTITY
HOLDER,PANNIER (Ref # 13280)	13280-1314	2
COVER,PANNIER,M.P.SILVER (Ref # 14093)	14093-1068-GU	2
STAY-COMP,LH (Ref # 39137)	39137-0708	1
STAY-COMP,RH (Ref # 39137A)	39137-0709	1
LABEL-WARNING,PICTOGRAM (Ref # 56071)	56071-0457	2
LABEL-WARNING,PICTOGRAM (Ref # 56071A)	56071-1042	2
BAG-ASSY,PANNIER,LH (Ref # 57004)	57004-0015	1
BAG-ASSY,PANNIER,RH (Ref # 57004A)	57004-0016	1
PLUG (Ref # 92066)	92066-1484	2
BOLT,FLANGED,6X14 (Ref # 92153)	92153-1571	2
BOLT,SOCKET8X20 (Ref # 92154)	92154-1711	2
SCREW,SOCKET,5X14 (Ref # 92172)	92172-0823	4
NUT,FLANGED,8MM (Ref # 92210)	92210-0304	2
SIDECASES (Ref # 99994)	99994-1490	1
PANEL-SIDECASES,M.P.SILVER (Ref # 99994A)	99994-1491-GU	1
FITTING-SIDECASES (Ref # 99994B)	99994-1492	1
ROTOR(2PC) (Ref # 99994C)	99994-1566	1
NUT-HEX,6MM (Ref # 311)	311BA0600	2