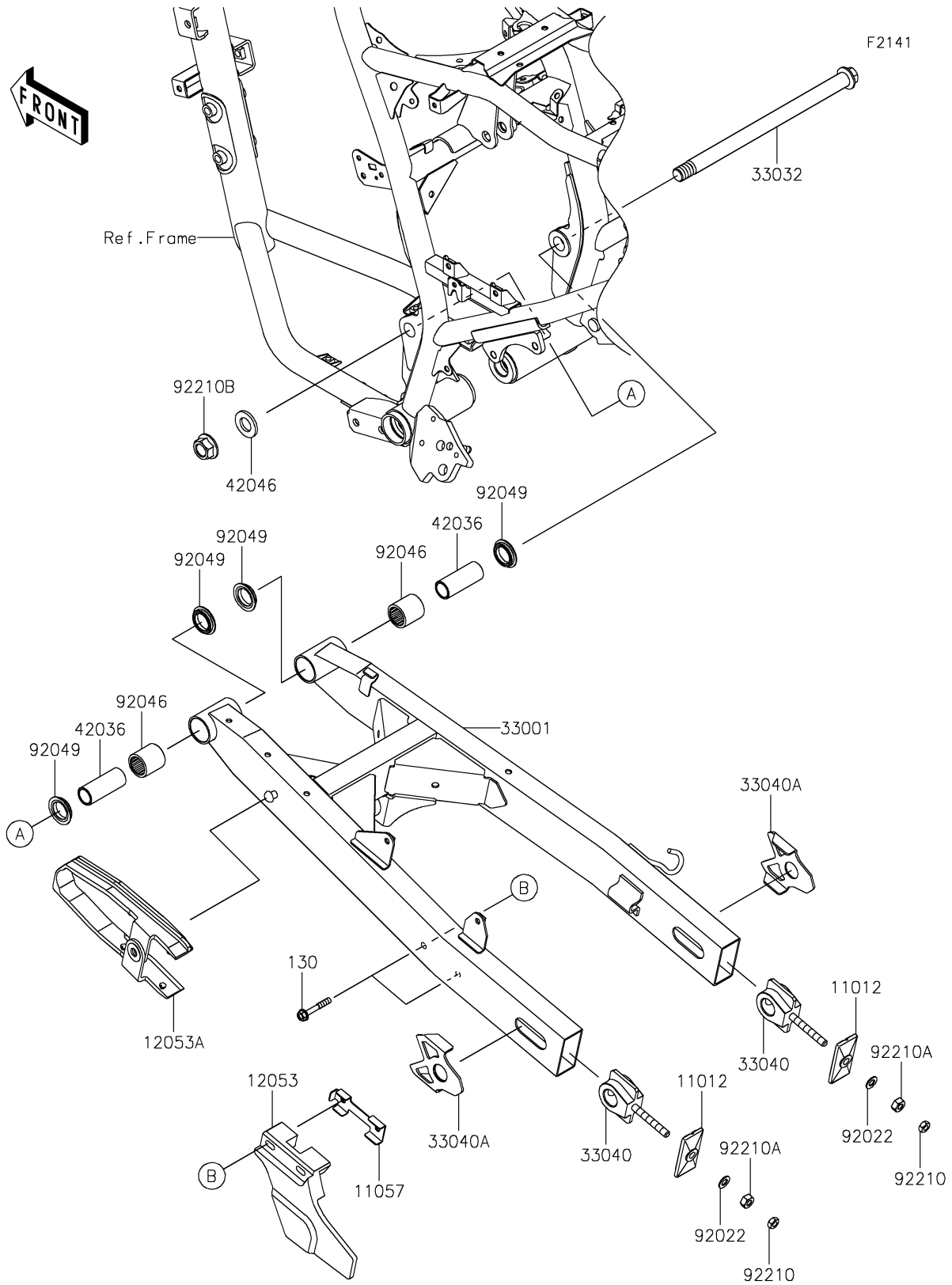


2022 KLR® 650 PARTS DIAGRAM

Swingarm



2022 KLR® 650 PARTS LIST

Swingarm

| ITEM NAME | PART NUMBER | QUANTITY |
|--|----------------|----------|
| CAP,CHAIN ADJUSTER,F.S.BLACK (Ref # 11012) | 11012-1871-18R | 2 |
| BRACKET,CHAIN GUIDE (Ref # 11057) | 11057-7405 | 1 |
| GUIDE-CHAIN,RR (Ref # 12053) | 12053-0222 | 1 |
| GUIDE-CHAIN,FR (Ref # 12053A) | 12053-0313 | 1 |
| ARM-COMP-SWING,F.S.BLACK (Ref # 33001) | 33001-0733-18R | 1 |
| SHAFT-SWING ARM (Ref # 33032) | 33032-0066 | 1 |
| ADJUSTER-CHAIN (Ref # 33040) | 33040-0098 | 2 |
| ADJUSTER-CHAIN,F.S.BLACK (Ref # 33040A) | 33040-0099-18R | 2 |
| SLEEVE,17.1X22X55.5 (Ref # 42036) | 42036-0859 | 2 |
| WASHER,17.3X32X3.2 (Ref # 42046) | 42046-009 | 1 |
| WASHER,8.5X16X1.2 (Ref # 92022) | 92022-1582 | 2 |
| BEARING-NEEDLE,TA2230Z (Ref # 92046) | 92046-1174 | 2 |
| SEAL-OIL,MHA22X29X5.7F (Ref # 92049) | 92049-1289 | 4 |
| NUT,8MM,5X12 (Ref # 92210) | 92210-1588 | 2 |
| NUT,8MM,6.5X14 (Ref # 92210A) | 92210-1589 | 2 |
| NUT,FLANGED,16MM (Ref # 92210B) | 92210-1817 | 1 |
| BOLT-FLANGED,6X40 (Ref # 130) | 130BA0640 | 2 |