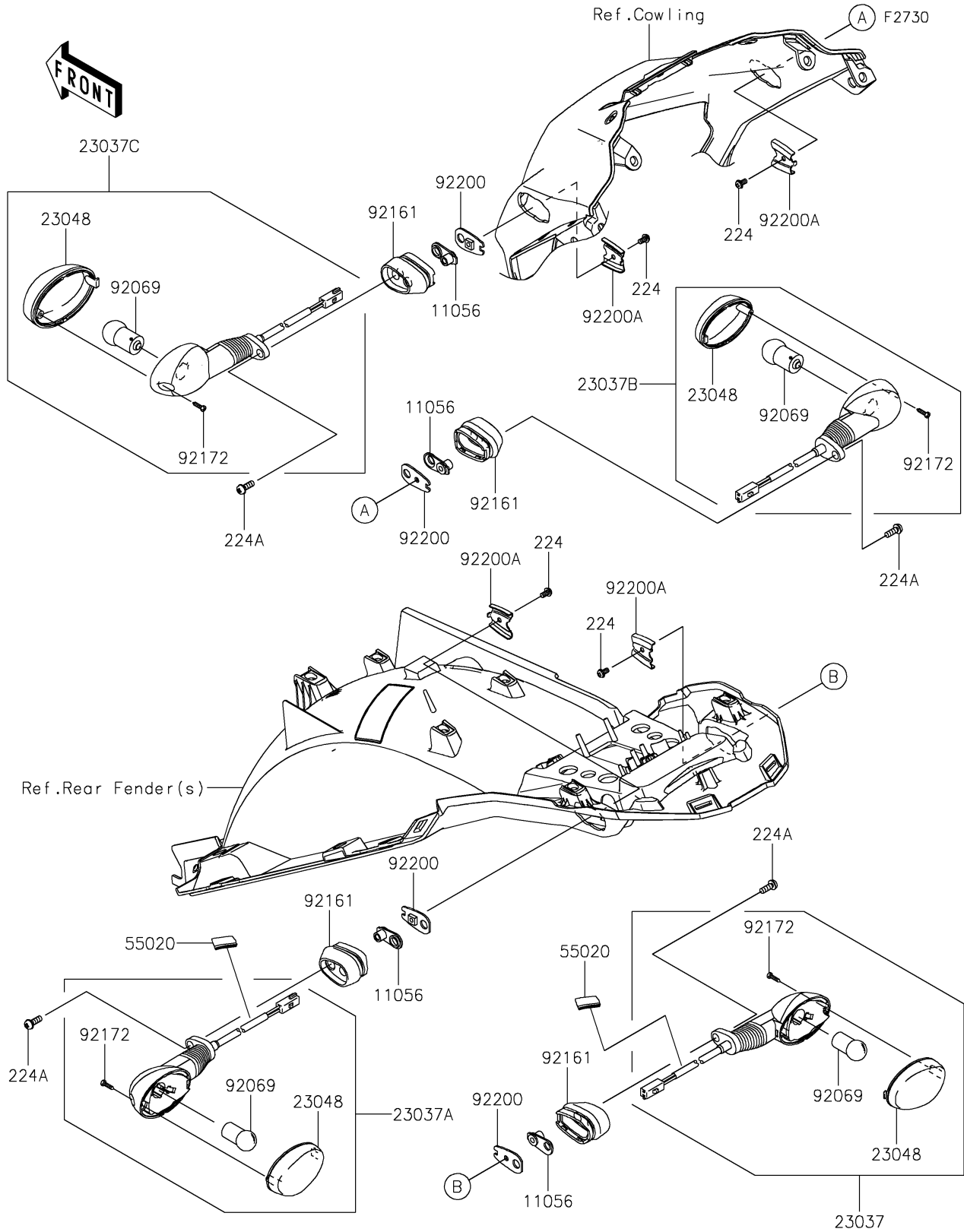


2022 KLR® 650 PARTS DIAGRAM

Turn Signals



2022 KLR® 650 PARTS LIST

Turn Signals

| ITEM NAME | PART NUMBER | QUANTITY |
|---------------------------------------|-------------|----------|
| BRACKET,6MM (Ref # 11056) | 11056-4156 | 4 |
| LAMP-ASSY-SIGNAL,RR,RH (Ref # 23037) | 23037-0416 | 1 |
| LAMP-ASSY-SIGNAL,RR,LH (Ref # 23037A) | 23037-0417 | 1 |
| LAMP-ASSY-SIGNAL,FR,RH (Ref # 23037B) | 23037-0418 | 1 |
| LAMP-ASSY-SIGNAL,FR,LH (Ref # 23037C) | 23037-0419 | 1 |
| LENS-SIGNAL LAMP (Ref # 23048) | 23048-0035 | 4 |
| GUARD,50X30 (Ref # 55020) | 55020-2334 | 2 |
| BULB,12V 10W (Ref # 92069) | 92069-0106 | 4 |
| DAMPER,SIGNAL LAMP (Ref # 92161) | 92161-1680 | 4 |
| SCREW,TAPPING,2.9X13 (Ref # 92172) | 92172-0343 | 4 |
| WASHER,SIGNAL LAMP (Ref # 92200) | 92200-0164 | 4 |
| WASHER,SIGNAL LAMP (Ref # 92200A) | 92200-0165 | 4 |
| SCREW-PAN-WP-CROS,4X8 (Ref # 224) | 224AB0408 | 4 |
| SCREW-PAN-WP-CROS,6X14 (Ref # 224A) | 224AB0614 | 4 |