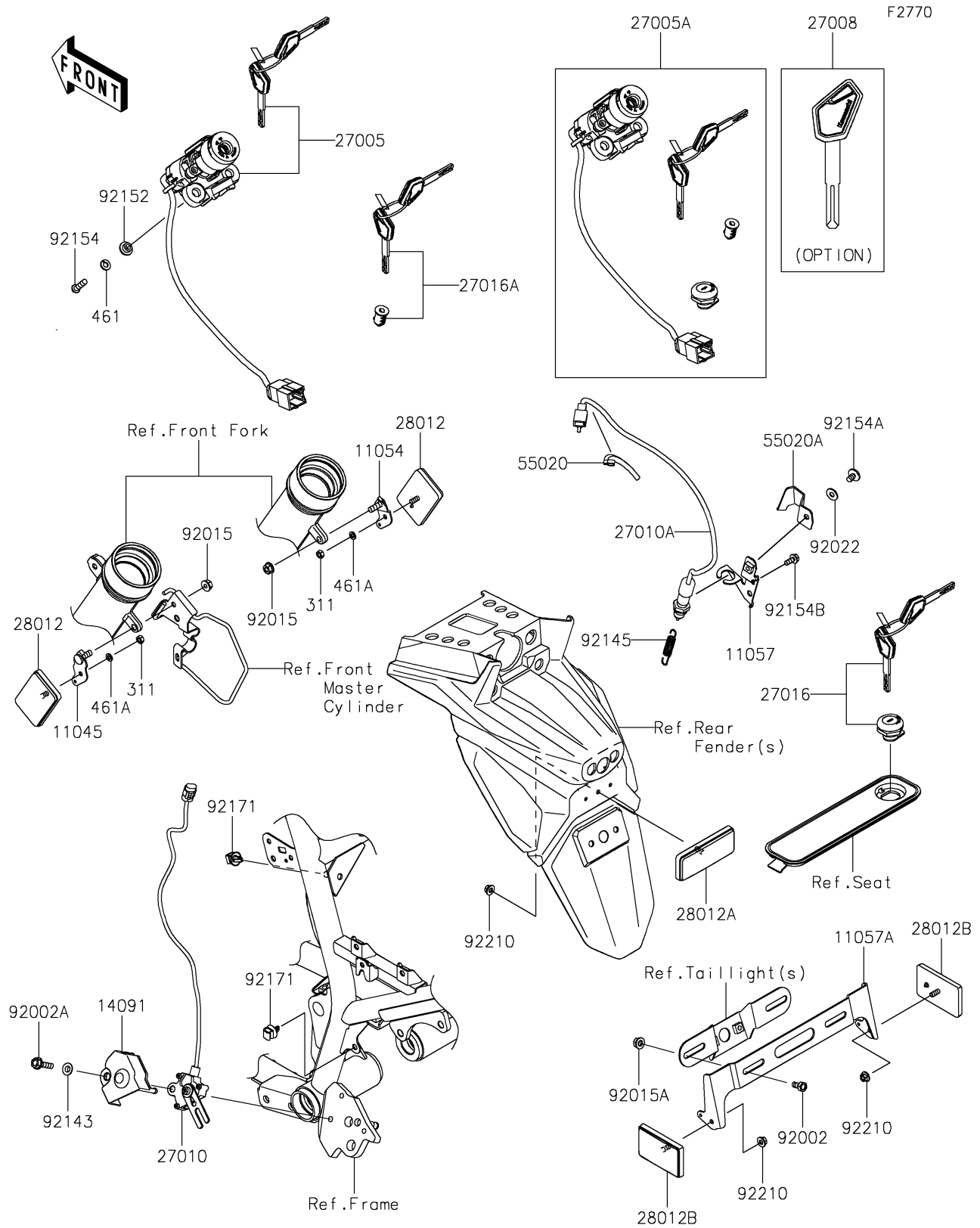


2022 KLR® 650 PARTS DIAGRAM

Ignition Switch



2022 KLR® 650 PARTS LIST

Ignition Switch

| ITEM NAME | PART NUMBER | QUANTITY |
|---------------------------------------|-------------|----------|
| BRACKET,REFLECTOR,FR (Ref # 11045) | 11045-1354 | 1 |
| BRACKET,REFLECTOR,FR (Ref # 11054) | 11054-1889 | 1 |
| BRACKET,REAR BRAKE (Ref # 11057) | 11057-4313 | 1 |
| BRACKET,REFLECTOR,RR (Ref # 11057A) | 11057-4368 | 1 |
| COVER,SIDE STAND SWITCH (Ref # 14091) | 14091-1553 | 1 |
| SWITCH-ASSY-IGNITION (Ref # 27005) | 27005-0702 | 1 |
| SWITCH-ASSY-IGNITION (Ref # 27005A) | 27005-5189 | 1 |
| KEY-LOCK,BLANK (Ref # 27008) | 27008-0688 | 1 |
| SWITCH,SIDE STAND (Ref # 27010) | 27010-0118 | 1 |
| SWITCH,REAR BRAKE (Ref # 27010A) | 27010-0969 | 1 |
| LOCK-ASSY,TOOL COVER (Ref # 27016) | 27016-5419 | 1 |
| LOCK-ASSY,TANK CAP (Ref # 27016A) | 27016-5421 | 1 |
| REFLECTOR-REFLEX (Ref # 28012) | 28012-1003 | 2 |
| REFLECTOR-REFLEX (Ref # 28012A) | 28012-1077 | 1 |
| REFLECTOR-REFLEX (Ref # 28012B) | 28012-1088 | 2 |
| GUARD,50X30 (Ref # 55020) | 55020-2334 | 1 |
| GUARD,REAR BRAKE (Ref # 55020A) | 55020-2378 | 1 |
| BOLT,6X12 (Ref # 92002) | 92002-1132 | 2 |
| BOLT,FLANGED,6X25 (Ref # 92002A) | 92002-1582 | 1 |
| NUT,FLANGED,6MM,BLACK (Ref # 92015) | 92015-1233 | 2 |
| NUT,FLANGED,6MM (Ref # 92015A) | 92015-1367 | 2 |
| WASHER,6.2X15X1.2 (Ref # 92022) | 92022-2373 | 1 |
| COLLAR (Ref # 92143) | 92143-1331 | 1 |
| SPRING,REAR BRAKE (Ref # 92145) | 92145-1896 | 1 |
| COLLAR,6.15X10.15X6 (Ref # 92152) | 92152-1535 | 2 |
| BOLT,TORX,6X22 (Ref # 92154) | 92154-1858 | 2 |
| BOLT,SOCKET,6X10 (Ref # 92154A) | 92154-2558 | 1 |
| BOLT,FLANGED,5X12 (Ref # 92154B) | 92154-2893 | 1 |
| CLAMP (Ref # 92171) | 92171-0640 | 2 |

2022 KLR® 650 PARTS LIST

Ignition Switch

| ITEM NAME | PART NUMBER | QUANTITY |
|--------------------------------|-------------|----------|
| NUT,FLANGED,5MM (Ref # 92210) | 92210-0007 | 3 |
| NUT-HEX,5MM (Ref # 311) | 311AB0500 | 2 |
| WASHER-SPRING,6MM (Ref # 461) | 461DA0600 | 2 |
| WASHER-SPRING,5MM (Ref # 461A) | 461DB0500 | 2 |