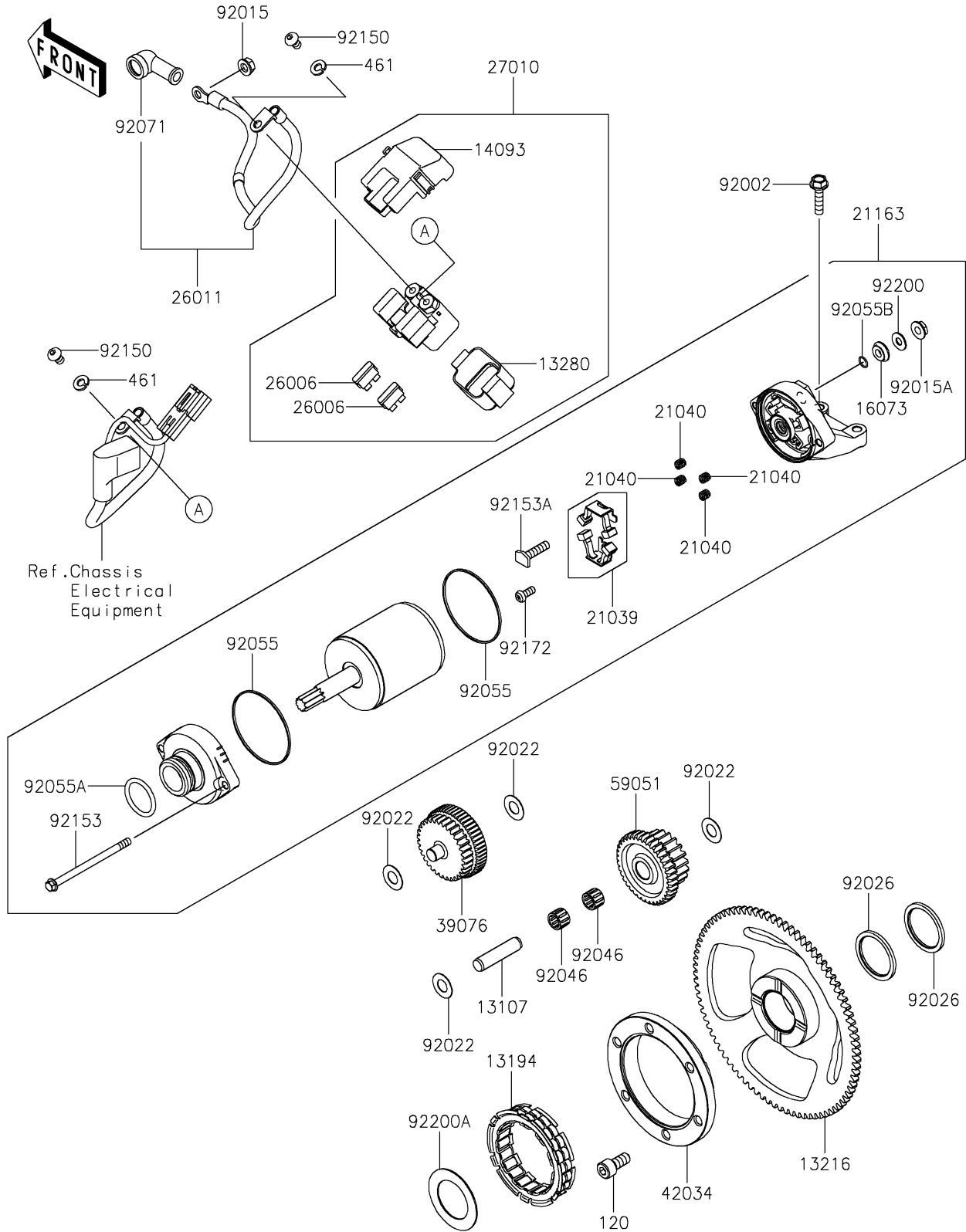


2022 KLR® 650 TRAVELER PARTS DIAGRAM

Starter Motor

E1840



2022 KLR® 650 TRAVELER PARTS LIST

Starter Motor

ITEM NAME	PART NUMBER	QUANTITY
SHAFT,IDLER (Ref # 13107)	13107-1135	1
CLUTCH-ONEWAY (Ref # 13194)	13194-1089	1
GEAR-COMP,ONEWAY CLUTCH (Ref # 13216)	13216-0044	1
HOLDER (Ref # 13280)	13280-0710	1
COVER (Ref # 14093)	14093-0199	1
INSULATOR (Ref # 16073)	16073-0053	1
BRUSH,CARBON (Ref # 21039)	21039-0004	1
SPRING-BRUSH (Ref # 21040)	21040-0003	4
STARTER-ELECTRIC (Ref # 21163)	21163-0790	1
FUSE,BLADE,30A,GREEN (Ref # 26006)	26006-1006	2
WIRE-LEAD,STARTER (Ref # 26011)	26011-1938	1
SWITCH,MAGNETIC (Ref # 27010)	27010-0948	1
LIMITER,STARTER IDLE GEAR (Ref # 39076)	39076-0021	1
COUPLING (Ref # 42034)	42034-1094	1
GEAR-SPUR,20T & 37T (Ref # 59051)	59051-1133	1
BOLT,FLANGED,6X25 (Ref # 92002)	92002-1086	2
NUT,FLANGED,6MM (Ref # 92015)	92015-1367	1
NUT,STARTER MOTOR (Ref # 92015A)	92015-1476	1
WASHER,10.2X20X0.5 (Ref # 92022)	92022-1649	4
SPACER (Ref # 92026)	92026-1474	2
BEARING-NEEDLE,K10X14X10 (Ref # 92046)	92046-1134	2
RING-O (Ref # 92055)	92055-0136	2
RING-O (Ref # 92055A)	92055-1276	1
RING-O,4.5X2.0 (Ref # 92055B)	92055-1370	1
GROMMET (Ref # 92071)	92071-0705	1
BOLT,6X10 (Ref # 92150)	92150-1577	2
BOLT (Ref # 92153)	92153-1850	2
BOLT (Ref # 92153A)	92153-1866	1
SCREW (Ref # 92172)	92172-0334	1

2022 KLR® 650 TRAVELER PARTS LIST

Starter Motor

ITEM NAME	PART NUMBER	QUANTITY
WASHER (Ref # 92200)	92200-0386	1
WASHER,32.2X50 (Ref # 92200A)	92200-0555	1
BOLT-SOCKET,8X18 (Ref # 120)	120CA0818	6
WASHER-SPRING,6MM (Ref # 461)	461DB0600	2