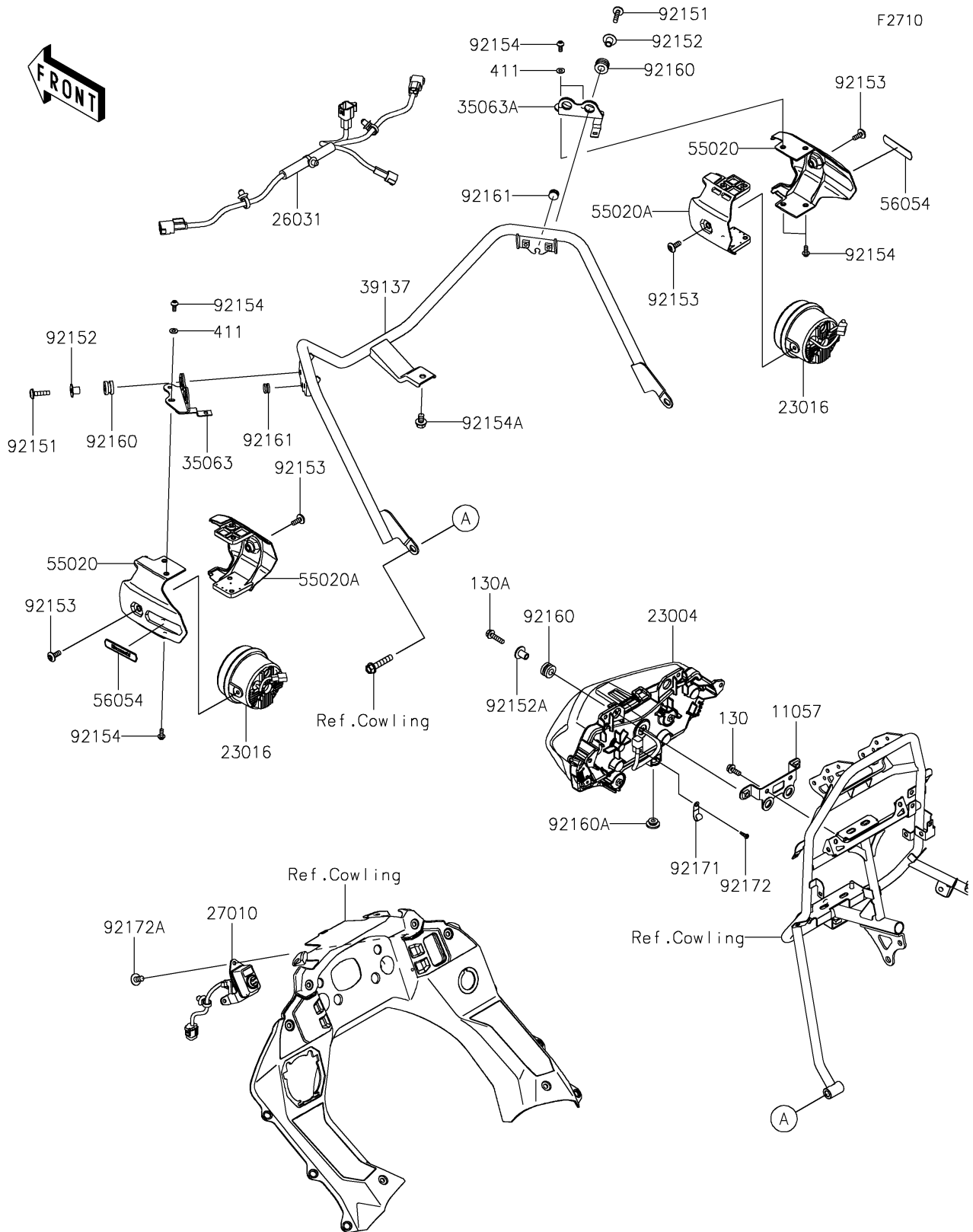


# 2022 KLR® 650 PARTS DIAGRAM

Headlight(s)



## 2022 KLR® 650 PARTS LIST

### Headlight(s)

ITEM NAME	PART NUMBER	QUANTITY
BRACKET,HEAD LAMP (Ref # 11057)	11057-4388	1
LAMP-HEAD,LED (Ref # 23004)	23004-0414	1
LAMP-ASSY,LED,FOG,PIAA (Ref # 23016)	23016-0599	2
HARNESS,FOG LAMP (Ref # 26031)	26031-3860	1
SWITCH,FOG LAMP (Ref # 27010)	27010-0968	1
STAY,LH (Ref # 35063)	35063-1537	1
STAY,RH (Ref # 35063A)	35063-1538	1
STAY-COMP,MAIN (Ref # 39137)	39137-0713	1
GUARD,OUTER (Ref # 55020)	55020-1825	2
GUARD,INNER (Ref # 55020A)	55020-1826	2
MARK,FOG LAMP,KAWASAKI (Ref # 56054)	56054-1695	2
BOLT,SOCKET,6X25 (Ref # 92151)	92151-1611	4
COLLAR,6.5X20X12 (Ref # 92152)	92152-2262	4
COLLAR,6.3X20X15.1 (Ref # 92152A)	92152-2322	2
BOLT,SOCKET,6X16 (Ref # 92153)	92153-1526	4
BOLT,SOCKET,5X12 (Ref # 92154)	92154-0917	8
BOLT,FLANGED,8X12 (Ref # 92154A)	92154-4252	1
DAMPER,10X20X12 (Ref # 92160)	92160-1167	6
DAMPER (Ref # 92160A)	92160-1613	2
DAMPER,8X14X8.9 (Ref # 92161)	92161-1666	2
CLAMP (Ref # 92171)	92171-1539	1
SCREW,TAPPING,4X12 (Ref # 92172)	92172-0233	1
SCREW,5X10 (Ref # 92172A)	92172-0864	3
BOLT-FLANGED,6X16 (Ref # 130)	130BA0616	2
BOLT-FLANGED,6X25 (Ref # 130A)	130BB0625	2
WASHER-PLAIN,5MM (Ref # 411)	411AB0500	4