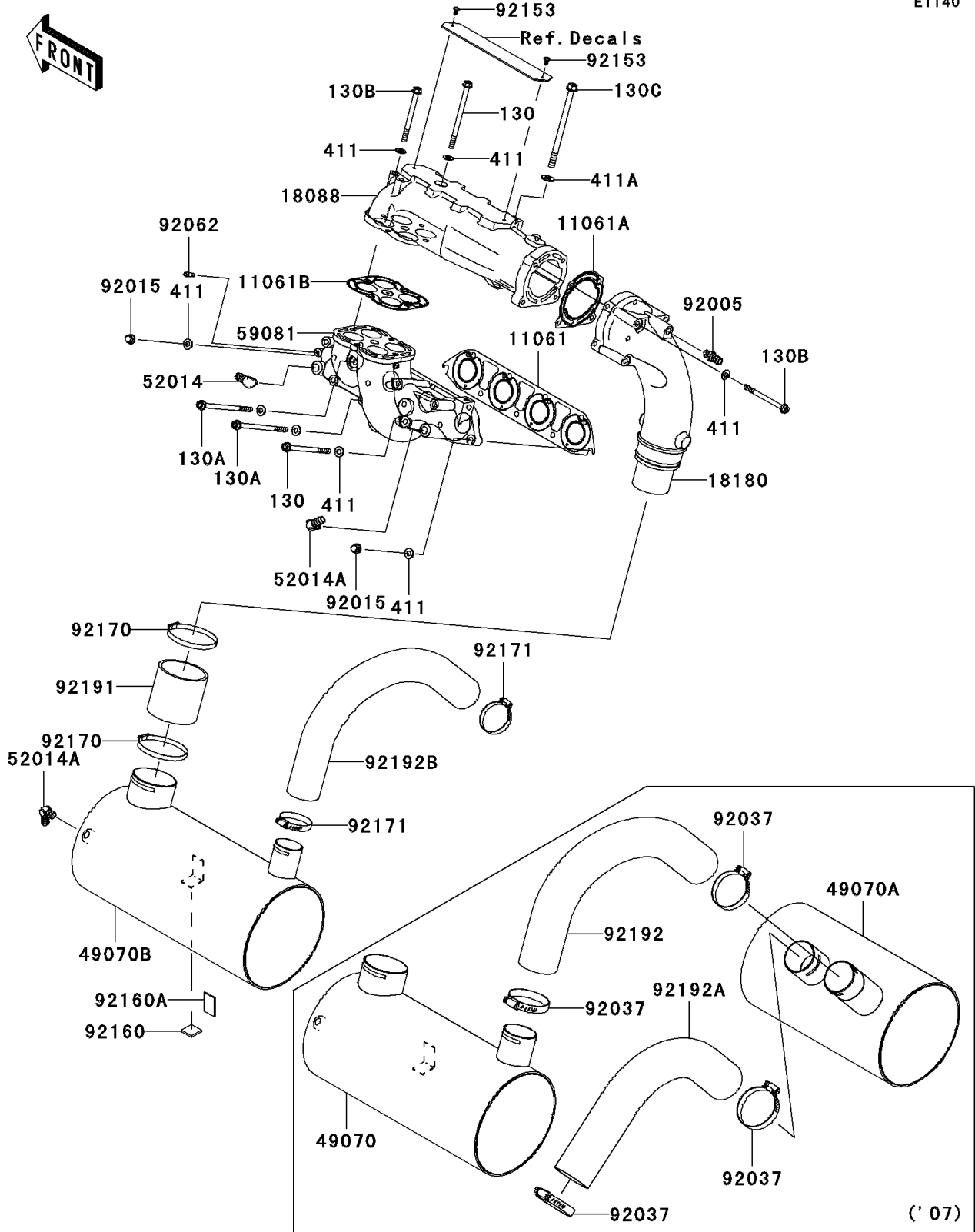


2008 Ultra 250X PARTS DIAGRAM

Muffler(s)

E1140



2008 Ultra 250X PARTS LIST

Muffler(s)

| ITEM NAME | PART NUMBER | QUANTITY |
|---------------------------------------|-------------|----------|
| GASKET,MANIFOLD EXHAUST (Ref # 11061) | 11061-3742 | 1 |
| GASKET,MUFFLER (Ref # 11061A) | 11061-3760 | 1 |
| GASKET,PIPE EXHAUST (Ref # 11061B) | 11061-3762 | 1 |
| PIPE-EXHAUST (Ref # 18088) | 18088-3726 | 1 |
| BODY-MUFFLER (Ref # 18180) | 18180-3741 | 1 |
| MUFFLER-COMP,1ST (Ref # 49070B) | 49070-3750 | 1 |
| ELBOW (Ref # 52014) | 52014-3711 | 1 |
| ELBOW (Ref # 52014A) | 52014-3726 | 2 |
| MANIFOLD-EXHAUST (Ref # 59081) | 59081-3743 | 1 |
| FITTING (Ref # 92005) | 92005-3714 | 1 |
| NUT,CAP,8MM (Ref # 92015) | 92015-1371 | 2 |
| NOZZLE (Ref # 92062) | 92062-3705 | 1 |
| BOLT,SOCKET,5X10 (Ref # 92153) | 92153-3747 | 2 |
| DAMPER,25X25 (Ref # 92160) | 92160-3864 | 1 |
| DAMPER,40X25 (Ref # 92160A) | 92160-3865 | 1 |
| CLAMP (Ref # 92170) | 92170-3760 | 2 |
| CLAMP (Ref # 92171) | 92171-3723 | 2 |
| TUBE,PIPE EX-MUFFLER (Ref # 92191) | 92191-3986 | 1 |
| TUBE,1ST-2ND (Ref # 92192B) | 92192-3831 | 1 |
| BOLT-FLANGED,8X120 (Ref # 130) | 130CD08120 | 8 |
| BOLT-FLANGED,8X140 (Ref # 130A) | 130CD08140 | 2 |
| BOLT-FLANGED,8X95 (Ref # 130B) | 130CD0895 | 5 |
| BOLT-FLANGED,10X150 (Ref # 130C) | 130CD10150 | 1 |
| WASHER-PLAIN,8MM (Ref # 411) | 411S0800 | 17 |
| WASHER-PLAIN,10MM (Ref # 411A) | 411S1000 | 1 |