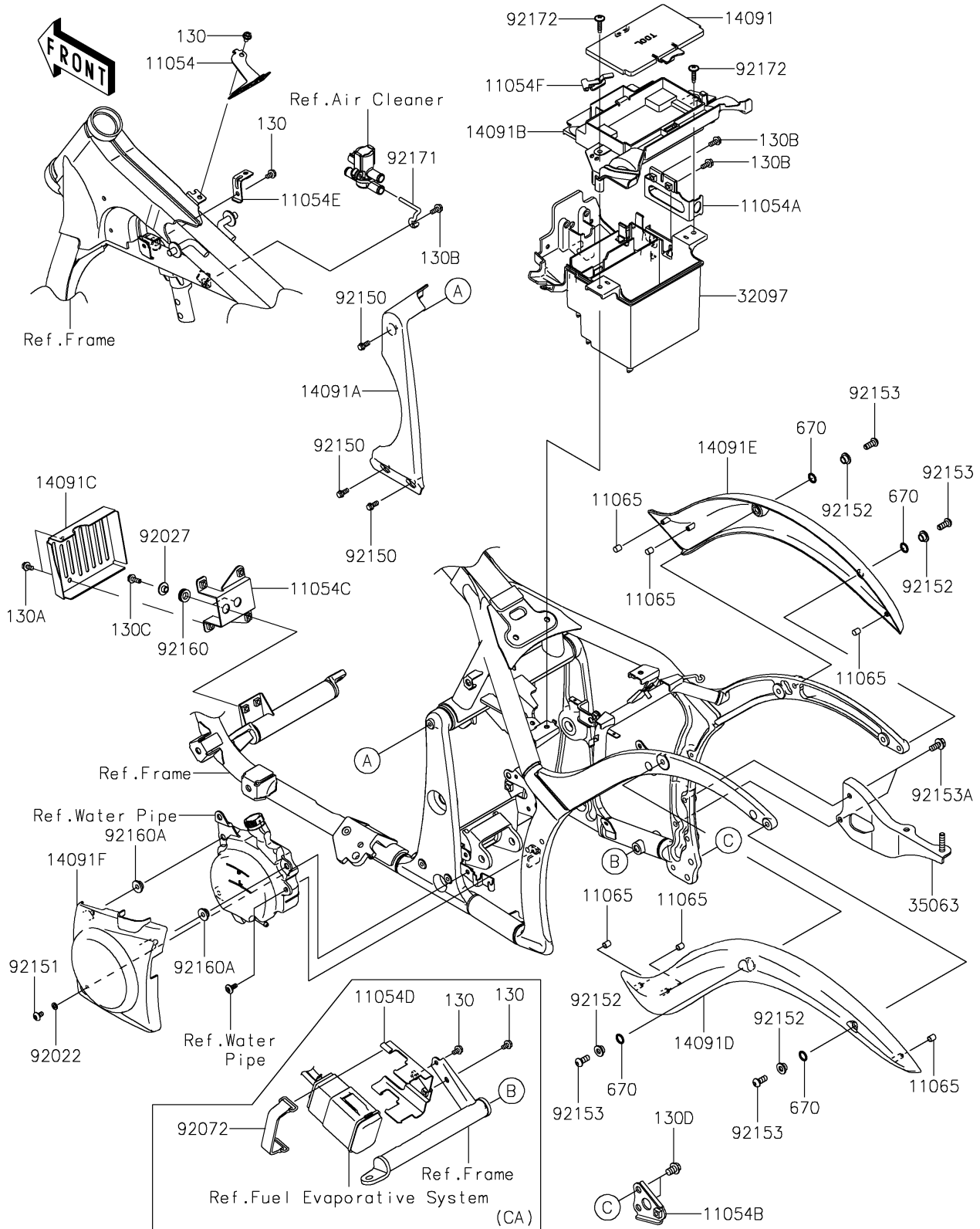


2021 VULCAN® 900 CUSTOM PARTS DIAGRAM

Frame Fittings

F2131



2021 VULCAN® 900 CUSTOM PARTS LIST

Frame Fittings

| ITEM NAME | PART NUMBER | QUANTITY |
|---|----------------|----------|
| BRACKET,FRONT COUPLER (Ref # 11054) | 11054-0119 | 1 |
| BRACKET,RELAY BOX (Ref # 11054A) | 11054-0120 | 1 |
| BRACKET,MUFFLER (Ref # 11054B) | 11054-0122 | 1 |
| BRACKET,REGULATOR (Ref # 11054C) | 11054-0124 | 1 |
| BRACKET,CANISTER (Ref # 11054D) | 11054-0147 | 1 |
| BRACKET,BOOST SENSOR (Ref # 11054E) | 11054-0736 | 1 |
| BRACKET,HELMET LOCK (Ref # 11054F) | 11054-0738 | 1 |
| CAP (Ref # 11065) | 11065-0156 | 6 |
| COVER,TOOL CASE (Ref # 14091) | 14091-0520 | 1 |
| COVER,PIVOT (Ref # 14091A) | 14091-0526 | 1 |
| COVER,BATTERY CASE&TOOL CASE (Ref # 14091B) | 14091-0733 | 1 |
| COVER,REGULATOR (Ref # 14091C) | 14091-0836 | 1 |
| COVER,FENDER,LH (Ref # 14091D) | 14091-1728 | 1 |
| COVER,FENDER,RH (Ref # 14091E) | 14091-1729 | 1 |
| COVER,RESERVOIR TANK (Ref # 14091F) | 14091-1772 | 1 |
| CASE-BATTERY (Ref # 32097) | 32097-0021 | 1 |
| STAY,MUFFLER,F.S.BLACK (Ref # 35063) | 35063-0342-18R | 1 |
| WASHER,6.2X11X1.5 (Ref # 92022) | 92022-183 | 1 |
| COLLAR,L=7.4 (Ref # 92027) | 92027-1848 | 2 |
| BAND (Ref # 92072) | 92072-1384 | 1 |
| BOLT,FLANGED,6X14 (Ref # 92150) | 92150-1689 | 3 |
| BOLT,SOCKET,6X12 (Ref # 92151) | 92151-1940 | 1 |
| COLLAR (Ref # 92152) | 92152-0381 | 4 |
| BOLT,SOCKET,8X20 (Ref # 92153) | 92153-0912 | 4 |
| BOLT,FLANGED,8X20 (Ref # 92153A) | 92153-1704 | 2 |
| DAMPER (Ref # 92160) | 92160-1278 | 2 |
| DAMPER (Ref # 92160A) | 92160-1613 | 2 |
| CLAMP (Ref # 92171) | 92171-0600 | 1 |
| SCREW,6X26 (Ref # 92172) | 92172-0137 | 2 |

2021 VULCAN® 900 CUSTOM PARTS LIST

Frame Fittings

| ITEM NAME | PART NUMBER | QUANTITY |
|---------------------------------|-------------|----------|
| BOLT-FLANGED,6X10 (Ref # 130) | 130BB0610 | 4 |
| BOLT-FLANGED,6X12 (Ref # 130A) | 130BB0612 | 2 |
| BOLT-FLANGED,6X14 (Ref # 130B) | 130BB0614 | 3 |
| BOLT-FLANGED,6X20 (Ref # 130C) | 130BB0620 | 2 |
| BOLT-FLANGED,10X14 (Ref # 130D) | 130BB1014 | 2 |
| O RING,12MM (Ref # 670) | 670B2012 | 4 |
| BOLT-FLANGED,6X10 (Ref # 130) | 130BB0610 | 2 |