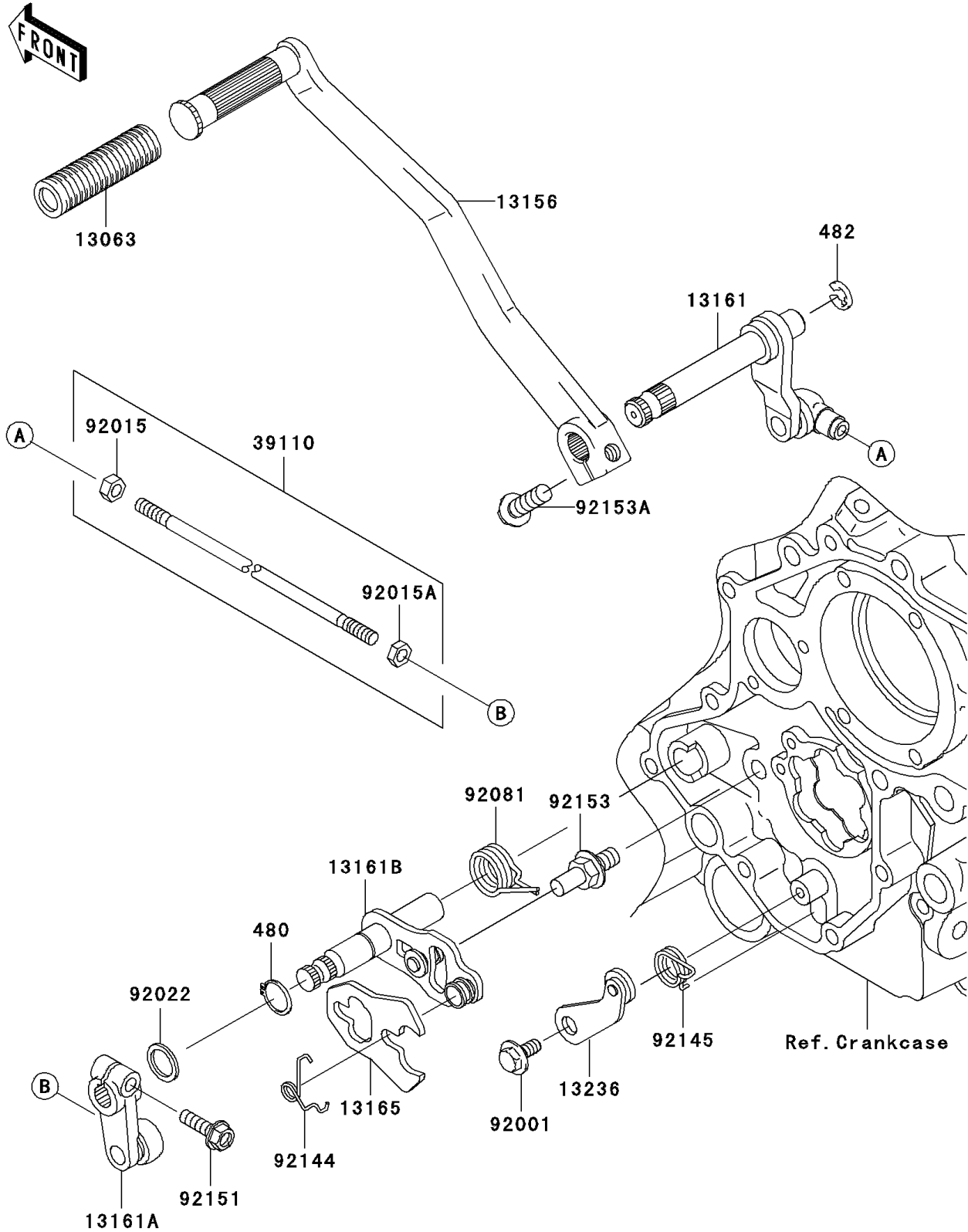


2006 Vulcan 1600 Mean Streak PARTS DIAGRAM

Gear Change Mechanism

E1370



2006 Vulcan 1600 Mean Streak PARTS LIST

Gear Change Mechanism

| ITEM NAME | PART NUMBER | QUANTITY |
|--|-------------|----------|
| CIRCLIP-TYPE-C,13MM (Ref # 480) | 480J1300 | 1 |
| CIRCLIP-TYPE-E,10MM (Ref # 482) | 482L0100 | 1 |
| DAMPER,PEDAL (Ref # 13063) | 13063-002 | 1 |
| LEVER-CHANGE (Ref # 13156) | 13156-0013 | 1 |
| LEVER-COMP-CHANGE SHAFT (Ref # 13161) | 13161-0006 | 1 |
| LEVER-COMP-CHANGE SHAFT (Ref # 13161A) | 13161-1253 | 1 |
| LEVER-COMP-CHANGE SHAFT (Ref # 13161B) | 13161-1254 | 1 |
| PAWL (Ref # 13165) | 13165-1120 | 1 |
| LEVER-COMP,POSITION (Ref # 13236) | 13236-1126 | 1 |
| ROD-ASSY-TIE (Ref # 39110) | 39110-1119 | 1 |
| BOLT,FLANGED,6X14 (Ref # 92001) | 92001-1715 | 1 |
| NUT,6MM (Ref # 92015) | 92015-1443 | 1 |
| NUT,LEFT HANDED,6MM (Ref # 92015A) | 92015-1444 | 1 |
| WASHER,13.2X20X0.5 (Ref # 92022) | 92022-1224 | 1 |
| SPRING,CHANGE PEDAL RETURN (Ref # 92081) | 92081-1869 | 1 |
| SPRING (Ref # 92144) | 92144-1029 | 1 |
| SPRING,RETURN (Ref # 92145) | 92145-0008 | 1 |
| BOLT,FLANGED,6X20 (Ref # 92151) | 92151-1226 | 1 |
| BOLT,RETURN SPRING (Ref # 92153) | 92153-1076 | 1 |
| BOLT,8X25 (Ref # 92153A) | 92153-1268 | 1 |