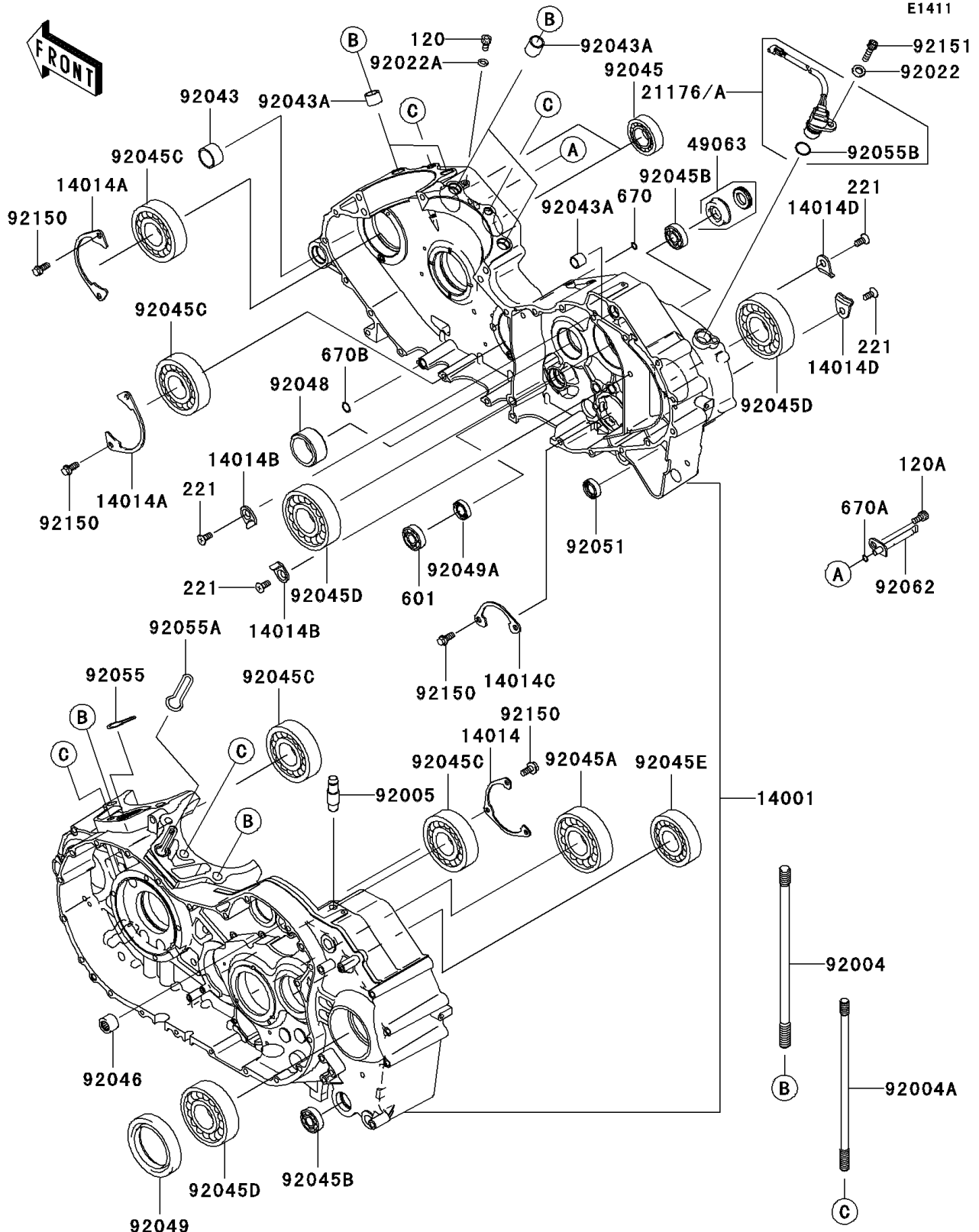


2004 Vulcan 2000 PARTS DIAGRAM

Crankcase



2004 Vulcan 2000 PARTS LIST

Crankcase

| ITEM NAME | PART NUMBER | QUANTITY |
|---|-------------|----------|
| BOLT-SOCKET,6X10 (Ref # 120) | 120R0610 | 1 |
| BOLT-SOCKET,6X12 (Ref # 120A) | 120R0612 | 1 |
| SCREW-CSK-CROS,6X14 (Ref # 221) | 221B0614 | 4 |
| BEARING-BALL (Ref # 601) | 601A6001 | 1 |
| O RING (Ref # 670) | 670D1505 | 1 |
| O RING,6MM (Ref # 670A) | 670D1506 | 1 |
| O RING (Ref # 670B) | 670D2010 | 1 |
| SET-CRANKCASE (Ref # 14001) | 14001-5392 | 1 |
| PLATE-POSITION (Ref # 14014) | 14014-0001 | 1 |
| PLATE-POSITION (Ref # 14014A) | 14014-0002 | 2 |
| PLATE-POSITION (Ref # 14014B) | 14014-0003 | 2 |
| PLATE-POSITION (Ref # 14014C) | 14014-0004 | 1 |
| PLATE-POSITION (Ref # 14014D) | 14014-0011 | 2 |
| SENSOR,SPEED (Ref # 21176) | 21176-0019 | 1 |
| SEAL-MECHANICAL,WATER (Ref # 49063) | 49063-1055 | 1 |
| STUD,12X217 (Ref # 92004) | 92004-0008 | 8 |
| STUD,10X206 (Ref # 92004A) | 92004-0009 | 4 |
| FITTING,BREATHER (Ref # 92005) | 92005-0015 | 1 |
| WASHER,6.5X11.5X2 (Ref # 92022) | 92022-1506 | 1 |
| WASHER,6.2X11X1 (Ref # 92022A) | 92022-304 | 1 |
| PIN,24X14 (Ref # 92043) | 92043-0032 | 1 |
| PIN,13X16X14 (Ref # 92043A) | 92043-1608 | 5 |
| BEARING-BALL,60/22 (Ref # 92045) | 92045-0002 | 2 |
| BEARING-BALL,6306LU (Ref # 92045A) | 92045-0022 | 1 |
| BEARING-BALL,6001JRXLLU/5K (Ref # 92045B) | 92045-1151 | 2 |
| BEARING-BALL,63/28 (Ref # 92045C) | 92045-1189 | 4 |
| BEARING-BALL,6306SH2 (Ref # 92045D) | 92045-1190 | 3 |
| BEARING-BALL,6305RHR4SH2 (Ref # 92045E) | 92045-1254 | 1 |
| BEARING-NEEDLE,HK1212 (Ref # 92046) | 92046-1163 | 1 |

2004 Vulcan 2000 PARTS LIST

Crankcase

| ITEM NAME | PART NUMBER | QUANTITY |
|--|-------------|----------|
| RACE (Ref # 92048) | 92048-1103 | 1 |
| SEAL-OIL (Ref # 92049) | 92049-0010 | 1 |
| SEAL-OIL,SC 12X22X5 (Ref # 92049A) | 92049-1228 | 1 |
| SEAL-OIL,TB13225.5 (Ref # 92051) | 92051-005 | 1 |
| RING-O,FR CYLINDER BASE (Ref # 92055) | 92055-0007 | 1 |
| RING-O,RR CYLINDER BASE (Ref # 92055A) | 92055-0008 | 1 |
| RING-O (Ref # 92055B) | 92055-1638 | 1 |
| NOZZLE (Ref # 92062) | 92062-0002 | 1 |
| BOLT,6X14 (Ref # 92150) | 92150-1916 | 9 |
| BOLT,SOCKET,6X20 (Ref # 92151) | 92151-3774 | 1 |