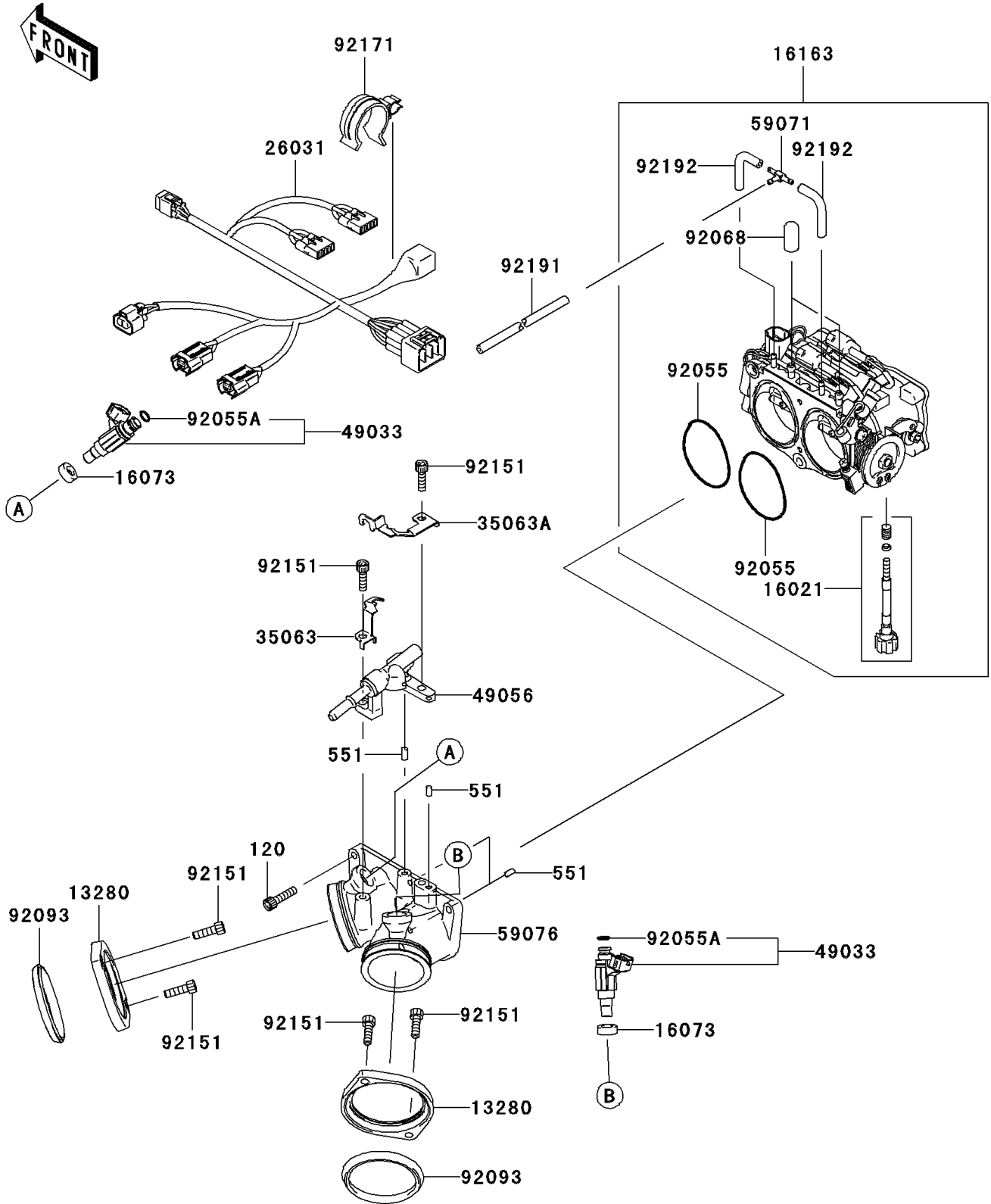


2007 Vulcan 2000 PARTS DIAGRAM

Throttle

E1510



2007 Vulcan 2000 PARTS LIST

Throttle

| ITEM NAME | PART NUMBER | QUANTITY |
|--|-------------|----------|
| BOLT-SOCKET,6X25 (Ref # 120) | 120W0625 | 3 |
| PIN-DOWEL (Ref # 551) | 551R0408 | 4 |
| HOLDER,INTAKE MANIFOLD (Ref # 13280) | 13280-0007 | 2 |
| SCREW-THROTTLE STOP (Ref # 16021) | 16021-0006 | 1 |
| INSULATOR (Ref # 16073) | 16073-3707 | 2 |
| THROTTLE-ASSY (Ref # 16163) | 16163-0001 | 1 |
| HARNESS (Ref # 26031) | 26031-0179 | 1 |
| STAY (Ref # 35063) | 35063-0075 | 1 |
| STAY (Ref # 35063A) | 35063-0076 | 1 |
| NOZZLE-INJECTION (Ref # 49033) | 49033-0003 | 2 |
| PIPE-INJECTION (Ref # 49056) | 49056-0004 | 1 |
| JOINT,3WAY,T (Ref # 59071) | 59071-3752 | 1 |
| MANIFOLD-INTAKE (Ref # 59076) | 59076-0001 | 1 |
| RING-O (Ref # 92055) | 92055-0056 | 2 |
| RING-O,INJECTION NOZZLE (Ref # 92055A) | 92055-1622 | 2 |
| PLUG,12X25 (Ref # 92068) | 92068-006 | 2 |
| SEAL (Ref # 92093) | 92093-0006 | 2 |
| BOLT,SOCKET,6X20 (Ref # 92151) | 92151-3774 | 6 |
| CLAMP (Ref # 92171) | 92171-0130 | 1 |
| TUBE,3X7X300 (Ref # 92191) | 92191-0032 | 1 |
| TUBE (Ref # 92192) | 92192-0106 | 2 |