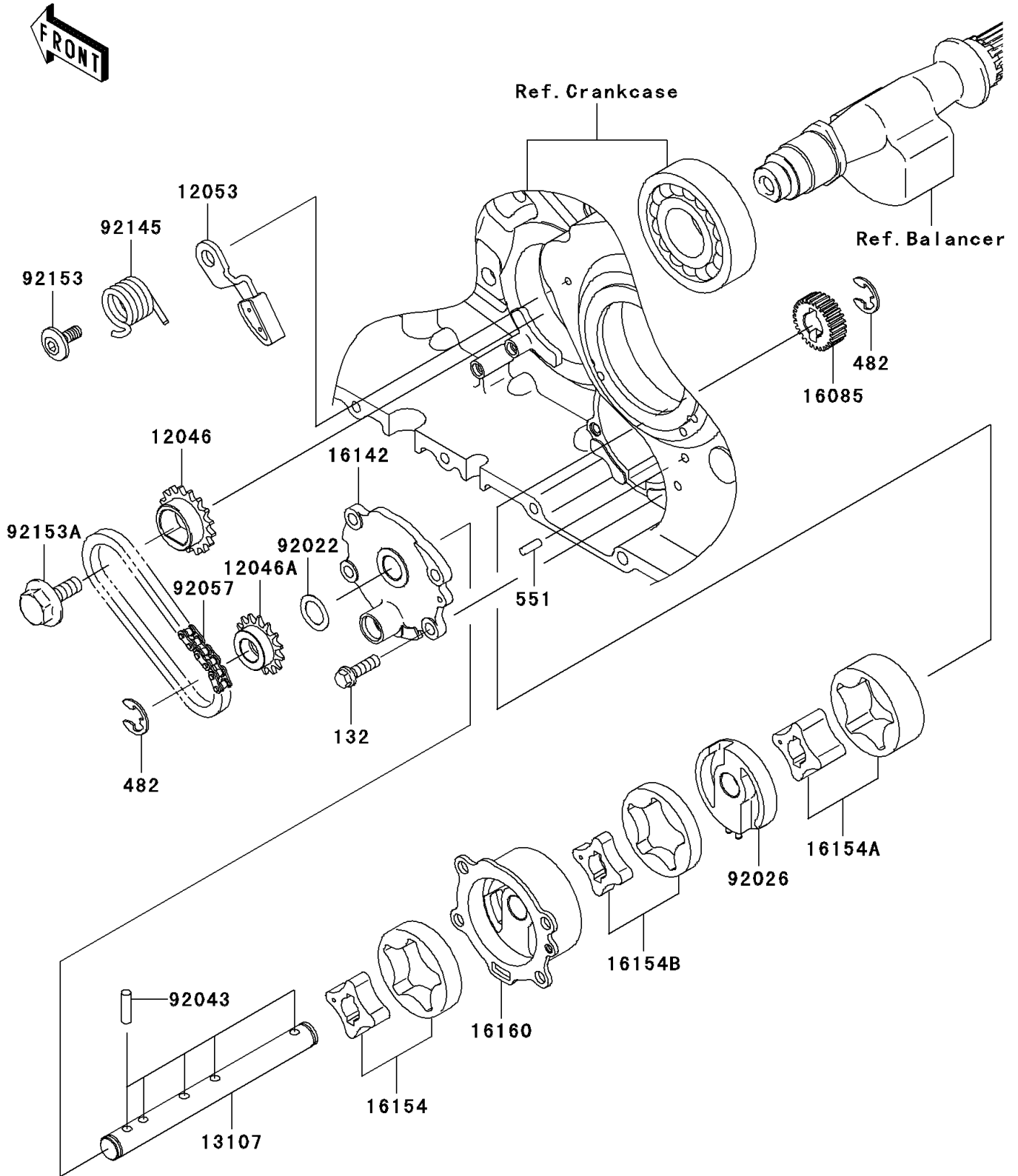


2007 Vulcan 2000 PARTS DIAGRAM

Oil Pump

E1712



2007 Vulcan 2000 PARTS LIST

Oil Pump

| ITEM NAME | PART NUMBER | QUANTITY |
|---|-------------|----------|
| BOLT-FLANGED-SMALL,6X20 (Ref # 132) | 132G0620 | 4 |
| CIRCLIP-TYPE-E,10MM (Ref # 482) | 482J0100 | 2 |
| PIN-DOWEL (Ref # 551) | 551A0412 | 1 |
| SPROCKET,DRIVE,17T (Ref # 12046) | 12046-0010 | 1 |
| SPROCKET,15T (Ref # 12046A) | 12046-0011 | 1 |
| GUIDE-CHAIN (Ref # 12053) | 12053-0005 | 1 |
| SHAFT (Ref # 13107) | 13107-0007 | 1 |
| GEAR,OIL PUMP,27T (Ref # 16085) | 16085-0006 | 1 |
| COVER-PUMP (Ref # 16142) | 16142-0014 | 1 |
| ROTOR-PUMP,FEED (Ref # 16154) | 16154-0001 | 1 |
| ROTOR-PUMP,SCAVENGE OILPAN (Ref # 16154A) | 16154-0004 | 1 |
| ROTOR-PUMP,SCAVENGE CLUTCH (Ref # 16154B) | 16154-0013 | 1 |
| BODY,OIL PUMP (Ref # 16160) | 16160-0002 | 1 |
| WASHER,13.2X20X0.5 (Ref # 92022) | 92022-1224 | 1 |
| SPACER (Ref # 92026) | 92026-0039 | 1 |
| PIN,17.9X5.0 (Ref # 92043) | 92043-1444 | 5 |
| CHAIN,DID25FH (Ref # 92057) | 92057-0029 | 1 |
| SPRING (Ref # 92145) | 92145-0036 | 1 |
| BOLT,6X15.4 (Ref # 92153) | 92153-0322 | 1 |
| BOLT,FLANGED,8X23 (Ref # 92153A) | 92153-0549 | 1 |