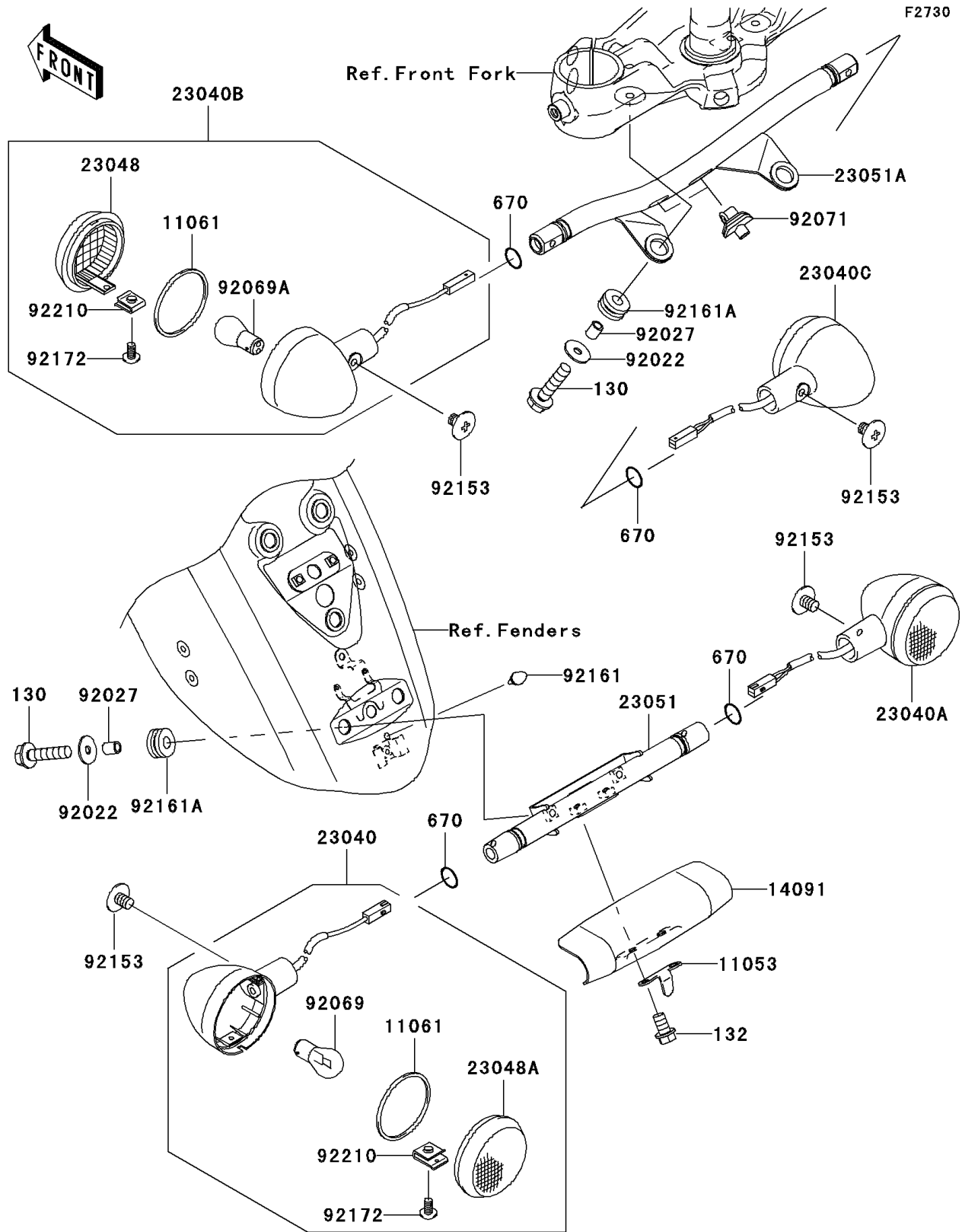


2008 Vulcan® 2000 PARTS DIAGRAM

Turn Signals



2008 Vulcan® 2000 PARTS LIST

Turn Signals

| ITEM NAME | PART NUMBER | QUANTITY |
|--|-------------|----------|
| BOLT-FLANGED,6X25 (Ref # 130) | 130BB0625 | 4 |
| BOLT-FLANGED-SMALL,6X12 (Ref # 132) | 132BB0612 | 2 |
| O RING,16MM (Ref # 670) | 670B2016 | 4 |
| BRACKET,REAR SIGNAL LAMP (Ref # 11053) | 11053-0929 | 1 |
| GASKET,SIGNAL LAMP (Ref # 11061) | 11061-0005 | 4 |
| COVER,REAR SIGNAL LAMP (Ref # 14091) | 14091-1572 | 1 |
| LAMP-SIGNAL,RR,LH (Ref # 23040) | 23040-0036 | 1 |
| LAMP-SIGNAL,RR,RH (Ref # 23040A) | 23040-0037 | 1 |
| LAMP-SIGNAL,FR,LH (Ref # 23040B) | 23040-0038 | 1 |
| LAMP-SIGNAL,FR,RH (Ref # 23040C) | 23040-0039 | 1 |
| LENS-SIGNAL LAMP (Ref # 23048) | 23048-0001 | 2 |
| LENS-SIGNAL LAMP (Ref # 23048A) | 23048-0002 | 2 |
| BRACKET-SIGNAL LAMP,RR (Ref # 23051) | 23051-0002 | 1 |
| BRACKET-SIGNAL LAMP,FR (Ref # 23051A) | 23051-0003 | 1 |
| WASHER,7X24X1.6 (Ref # 92022) | 92022-1160 | 4 |
| COLLAR,6.8X10X12 (Ref # 92027) | 92027-162 | 4 |
| BULB,12V 21W (Ref # 92069) | | 2 |
| BULB,12V 21/5W (Ref # 92069A) | 92069-1084 | 2 |
| GROMMET,SIGNAL LAMP (Ref # 92071) | 92071-0007 | 2 |
| BOLT,6MM (Ref # 92153) | 92153-0396 | 4 |
| DAMPER (Ref # 92161) | 92161-0091 | 1 |
| DAMPER (Ref # 92161A) | 92161-0163 | 4 |
| SCREW,4X8 (Ref # 92172) | 92172-0146 | 4 |
| NUT,4MM (Ref # 92210) | 92210-0155 | 4 |