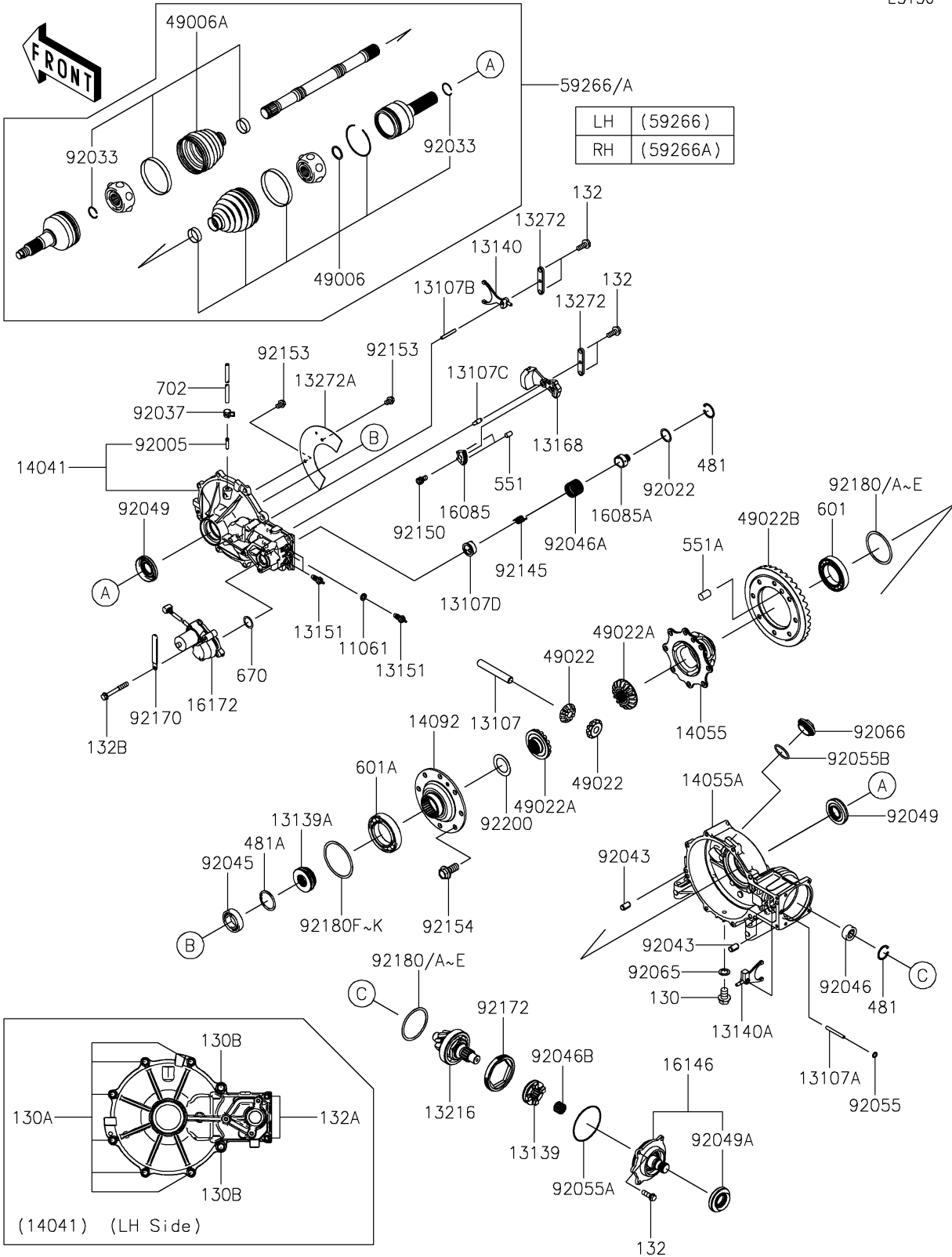


2024 Teryx4™ S LE PARTS DIAGRAM

Drive Shaft-Front

E3136



2024 Teryx4™ S LE PARTS LIST

Drive Shaft-Front

| ITEM NAME | PART NUMBER | QUANTITY |
|--------------------------------------|-------------|----------|
| GASKET,10.5X16X3 (Ref # 11061) | 11061-0805 | 1 |
| SHAFT,CROSS (Ref # 13107) | 13107-0758 | 1 |
| SHAFT,6X55 (Ref # 13107A) | 13107-0759 | 1 |
| SHAFT,DIFF LOCK (Ref # 13107B) | 13107-0768 | 1 |
| SHAFT (Ref # 13107C) | 13107-0775 | 1 |
| SHAFT,ACTUATOR OUTPUT (Ref # 13107D) | 13107-0776 | 1 |
| SHIFTER (Ref # 13139) | 13139-0017 | 1 |
| SHIFTER,DIFF LOCK (Ref # 13139A) | 13139-0018 | 1 |
| FORK-SHIFT (Ref # 13140) | 13140-0070 | 1 |
| FORK-SHIFT (Ref # 13140A) | 13140-0635 | 1 |
| SWITCH-COMP (Ref # 13151) | 13151-1086 | 3 |
| LEVER (Ref # 13168) | 13168-0731 | 1 |
| GEAR-COMP,BEVEL,8T (Ref # 13216) | 13216-0884 | 1 |
| PLATE (Ref # 13272) | 13272-0985 | 2 |
| PLATE (Ref # 13272A) | 13272-0986 | 1 |
| COVER-COMP,LH (Ref # 14041) | 14041-0575 | 1 |
| CASE-GEAR,CROSS SHAFT (Ref # 14055) | 14055-0602 | 1 |
| CASE-GEAR,RH (Ref # 14055A) | 14055-0626 | 1 |
| COVER,CROSS SHAFT CASE (Ref # 14092) | 14092-1042 | 1 |
| GEAR,65T (Ref # 16085) | 16085-0605 | 1 |
| GEAR,13T (Ref # 16085A) | 16085-0614 | 1 |
| COVER-ASSY,INPUT SHAFT (Ref # 16146) | 16146-0740 | 1 |
| ACTUATOR (Ref # 16172) | 16172-0038 | 1 |
| BOOT,INSIDE (Ref # 49006) | 49006-0578 | 2 |
| BOOT,OUTSIDE (Ref # 49006A) | 49006-0638 | 2 |
| GEAR-BEVEL,10T (Ref # 49022) | 49022-0579 | 2 |
| GEAR-BEVEL,16T (Ref # 49022A) | 49022-0580 | 2 |
| GEAR-BEVEL,35T (Ref # 49022B) | 49022-0607 | 1 |
| JOINT-BALL,LH (Ref # 59266) | 59266-0744 | 1 |

2024 Teryx4™ S LE PARTS LIST

Drive Shaft-Front

| ITEM NAME | PART NUMBER | QUANTITY |
|---------------------------------------|-------------|----------|
| JOINT-BALL,RH (Ref # 59266A) | 59266-0745 | 1 |
| FITTING (Ref # 92005) | 92005-1142 | 1 |
| WASHER,25.3X32X0.5 (Ref # 92022) | 92022-225 | 1 |
| RING-SNAP (Ref # 92033) | 92033-0837 | 4 |
| CLAMP,TUBE (Ref # 92037) | 92037-1461 | 1 |
| PIN,6.2X8X14 (Ref # 92043) | 92043-1263 | 2 |
| BEARING-BALL,60/28 (Ref # 92045) | 92045-1176 | 1 |
| BEARING-NEEDLE,AJ501907 (Ref # 92046) | 92046-0025 | 1 |
| BEARING-NEEDLE (Ref # 92046A) | 92046-0050 | 1 |
| BEARING-NEEDLE (Ref # 92046B) | 92046-1234 | 1 |
| SEAL-OIL,28X60X7 (Ref # 92049) | 92049-0089 | 2 |
| SEAL-OIL (Ref # 92049A) | 92049-0160 | 1 |
| RING-O,7.5X1.5 (Ref # 92055) | 92055-0756 | 1 |
| RING-O (Ref # 92055A) | 92055-081 | 1 |
| RING-O,35.8MM (Ref # 92055B) | 92055-1281 | 1 |
| GASKET,10.5X16X1 (Ref # 92065) | 92065-058 | 1 |
| PLUG,36X7.5 (Ref # 92066) | 92066-0744 | 1 |
| SPRING (Ref # 92145) | 92145-0975 | 1 |
| BOLT,SOCKET,6X10 (Ref # 92150) | 92150-1650 | 1 |
| BOLT,FLANGED-SMALL,6X8 (Ref # 92153) | 92153-0964 | 2 |
| BOLT,FLANGED,10X23 (Ref # 92154) | 92154-0550 | 8 |
| CLAMP (Ref # 92170) | 92170-1925 | 1 |
| SCREW,SET,85X11.5 (Ref # 92172) | 92172-1122 | 1 |
| SHIM,70X80X0.15 (Ref # 92180) | 92180-0972 | AR |
| SHIM,70X80X0.2 (Ref # 92180A) | 92180-0973 | AR |
| SHIM,70X80X0.5 (Ref # 92180B) | 92180-0974 | AR |
| SHIM,70X80X0.8 (Ref # 92180C) | 92180-0975 | AR |
| SHIM,70X80X1.0 (Ref # 92180D) | 92180-0976 | AR |
| SHIM,70X80X1.2 (Ref # 92180E) | 92180-0977 | AR |

2024 Teryx4™ S LE PARTS LIST

Drive Shaft-Front

| ITEM NAME | PART NUMBER | QUANTITY |
|--------------------------------------|-------------|----------|
| SHIM,80X90X0.15 (Ref # 92180F) | 92180-0978 | AR |
| SHIM,80X90X0.2 (Ref # 92180G) | 92180-0979 | AR |
| SHIM,80X90X0.5 (Ref # 92180H) | 92180-0980 | AR |
| SHIM,80X90X0.8 (Ref # 92180I) | 92180-0981 | AR |
| SHIM,80X90X1.0 (Ref # 92180J) | 92180-0982 | AR |
| SHIM,80X90X1.2 (Ref # 92180K) | 92180-0983 | AR |
| WASHER (Ref # 92200) | 92200-1077 | 1 |
| BOLT-FLANGED,10X14 (Ref # 130) | 130BA1014 | 1 |
| BOLT-FLANGED,8X25 (Ref # 130A) | 130CA0825 | 6 |
| BOLT-FLANGED,10X30 (Ref # 130B) | 130CA1030 | 2 |
| BOLT-FLANGED-SMALL,6X16 (Ref # 132) | 132BA0616 | 8 |
| BOLT-FLANGED-SMALL,6X25 (Ref # 132A) | 132BA0625 | 2 |
| BOLT-FLANGED-SMALL,6X45 (Ref # 132B) | 132BA0645 | 3 |
| CIRCLIP-TYPE-C,32MM (Ref # 481) | 481J3200 | 2 |
| CIRCLIP-TYPE-C,52MM (Ref # 481A) | 481J5200 | 1 |
| PIN-DOWEL,4X10 (Ref # 551) | 551A0410 | 2 |
| PIN-DOWEL,10X16 (Ref # 551A) | 551A1016 | 1 |
| BEARING-BALL (Ref # 601) | 601B6010 | 1 |
| BEARING-BALL (Ref # 601A) | 601B6011 | 1 |
| O RING (Ref # 670) | 670D3022 | 1 |
| TUBE-RUBBER,5X8X930 (Ref # 702) | 702A05930 | 1 |