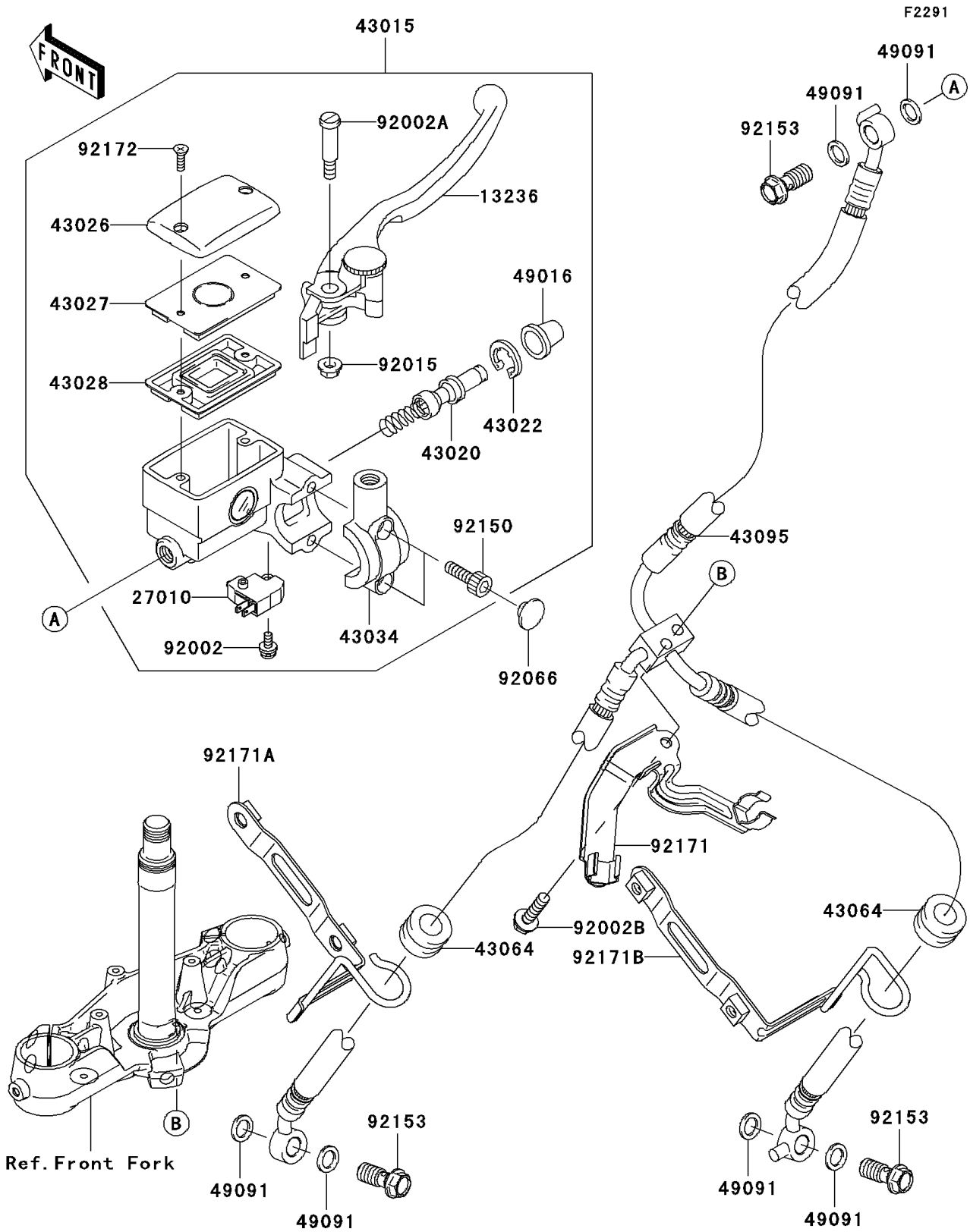


2007 Vulcan 2000 Classic LT PARTS DIAGRAM

Front Master Cylinder



2007 Vulcan 2000 Classic LT PARTS LIST

Front Master Cylinder

| ITEM NAME | PART NUMBER | QUANTITY |
|--|-------------|----------|
| LEVER-COMP,FRONT BRAKE (Ref # 13236) | 13236-1315 | 1 |
| SWITCH,BRAKE (Ref # 27010) | 27010-0025 | 1 |
| CYLINDER-ASSY-MASTER,FR (Ref # 43015) | 43015-0025 | 1 |
| PISTON-COMP-BRAKE,FR (Ref # 43020) | 43020-1054 | 1 |
| STOPPER-BRAKE,PISTON (Ref # 43022) | 43022-1010 | 1 |
| CAP-BRAKE (Ref # 43026) | 43026-0003 | 1 |
| PLATE-DIAPHRAGM (Ref # 43027) | 43027-1059 | 1 |
| DIAPHRAGM,MASTER CYLINDER (Ref # 43028) | 43028-1058 | 1 |
| HOLDER-BRAKE (Ref # 43034) | 43034-1172 | 1 |
| GROMMET,HOSE CLAMP (Ref # 43064) | 43064-006 | 2 |
| HOSE-BRAKE,FR (Ref # 43095) | 43095-0233 | 1 |
| COVER-SEAL,MASTER CYLINDER (Ref # 49016) | 49016-1044 | 1 |
| WASHER-SEAL,10.1X14.5X1.5 (Ref # 49091) | 49091-0001 | 6 |
| BOLT,SCREW,4X12 (Ref # 92002) | 92002-1323 | 1 |
| BOLT,LEVER SET (Ref # 92002A) | 92002-1561 | 1 |
| BOLT,6X26.6 (Ref # 92002B) | 92002-1912 | 1 |
| NUT,FLANGED,6MM (Ref # 92015) | 92015-1528 | 1 |
| PLUG (Ref # 92066) | 92066-1301 | 2 |
| BOLT,SOCKET,6MM (Ref # 92150) | 92150-1025 | 2 |
| BOLT,OIL,L=23 (Ref # 92153) | 92153-0627 | 3 |
| CLAMP,BRAKE HOSE (Ref # 92171) | 92171-0449 | 1 |
| CLAMP,BRAKE HOSE,LH (Ref # 92171A) | 92171-0530 | 1 |
| CLAMP,BRAKE HOSE,RH (Ref # 92171B) | 92171-0531 | 1 |
| SCREW (Ref # 92172) | 92172-0083 | 2 |