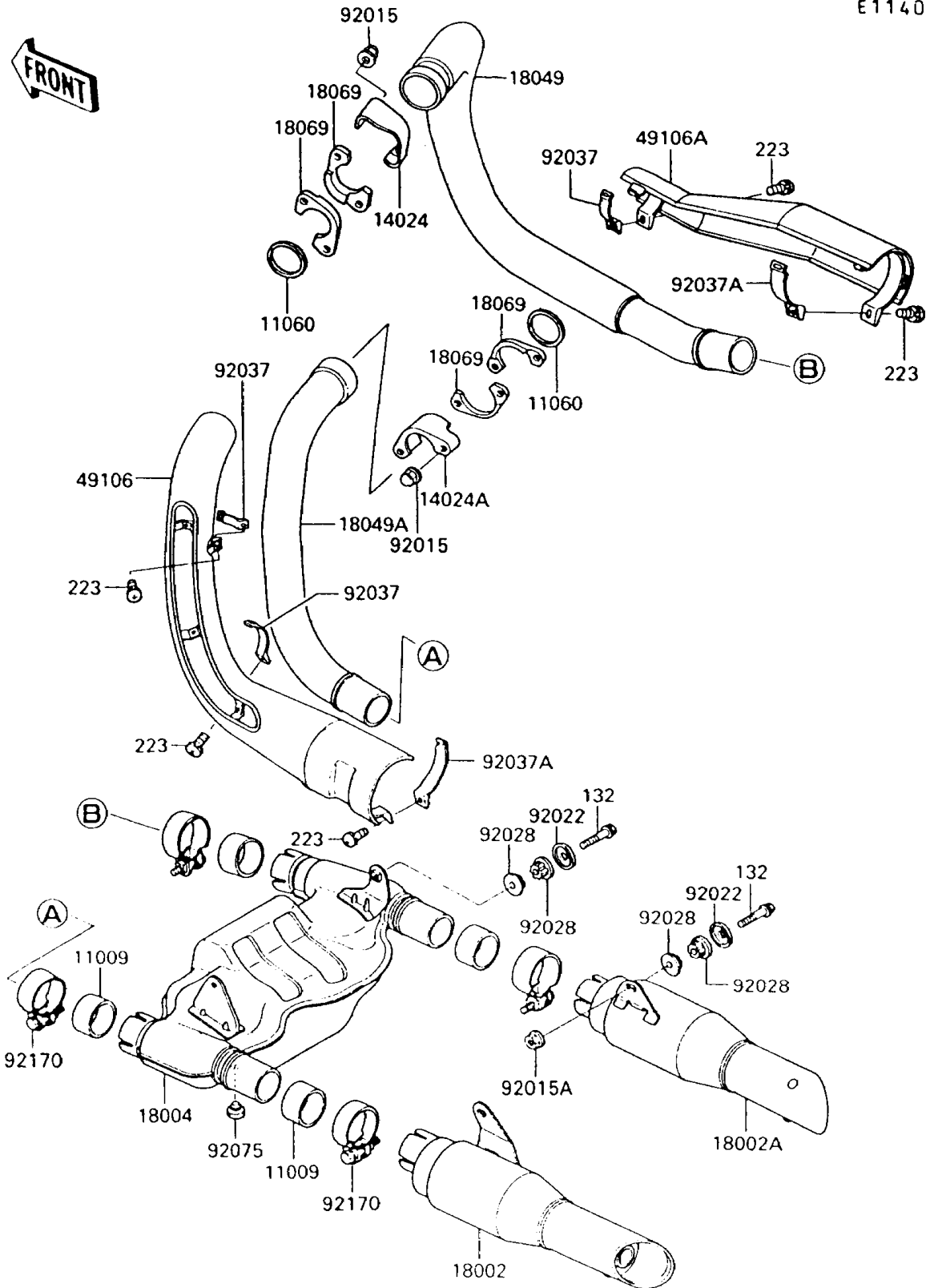


1996 Vulcan 750 PARTS DIAGRAM

Muffler(s)

E1140



1996 Vulcan 750 PARTS LIST

Muffler(s)

| ITEM NAME | PART NUMBER | QUANTITY |
|--|-------------|----------|
| BOLT-FLANGED-SMALL (Ref # 132) | 132E0840 | 4 |
| SCREW-PAN-WS-CROS (Ref # 223) | 223X0620 | 5 |
| GASKET,EXHAUST PIPE CONNECTING (Ref # 11009) | 11009-1666 | 4 |
| GASKET,EXHAUST PIPE (Ref # 11060) | 11060-1119 | 2 |
| COVER,FR (Ref # 14024) | 14024-1091 | 1 |
| COVER,RR (Ref # 14024A) | 14024-1092 | 1 |
| BODY-COMP-MUFFLER,LH (Ref # 18002) | 18002-1701 | 1 |
| BODY-COMP-MUFFLER,RH (Ref # 18002A) | 18002-1702 | 1 |
| CHAMBER-PREMUFFLER (Ref # 18004) | 18004-1055 | 1 |
| PIPE-EXHAUST,FR (Ref # 18049) | 18049-1373 | 1 |
| PIPE-EXHAUST,RR (Ref # 18049A) | 18049-1374 | 1 |
| HOLDER-EXHAUST PIPE (Ref # 18069) | 18069-1061 | 4 |
| COVER-MUFFLER,LH (Ref # 49106) | 49106-1053 | 1 |
| COVER-MUFFLER,RH (Ref # 49106A) | 49106-1054 | 1 |
| NUT,CAP,8MM (Ref # 92015) | 92015-1371 | 4 |
| NUT,FLANGED,8MM (Ref # 92015A) | 92015-1933 | 2 |
| WASHER,CAP TYPE (Ref # 92022) | 92022-1638 | 4 |
| BUSHING,MUFFLER (Ref # 92028) | 92028-1746 | 8 |
| CLAMP,EXHAUST PIPE COVER (Ref # 92037) | 92037-1613 | 3 |
| CLAMP,MUFFLER COVER (Ref # 92037A) | 92037-1615 | 2 |
| DAMPER (Ref # 92075) | 92075-005 | 1 |
| CLAMP,52MM (Ref # 92170) | 92170-1446 | 4 |