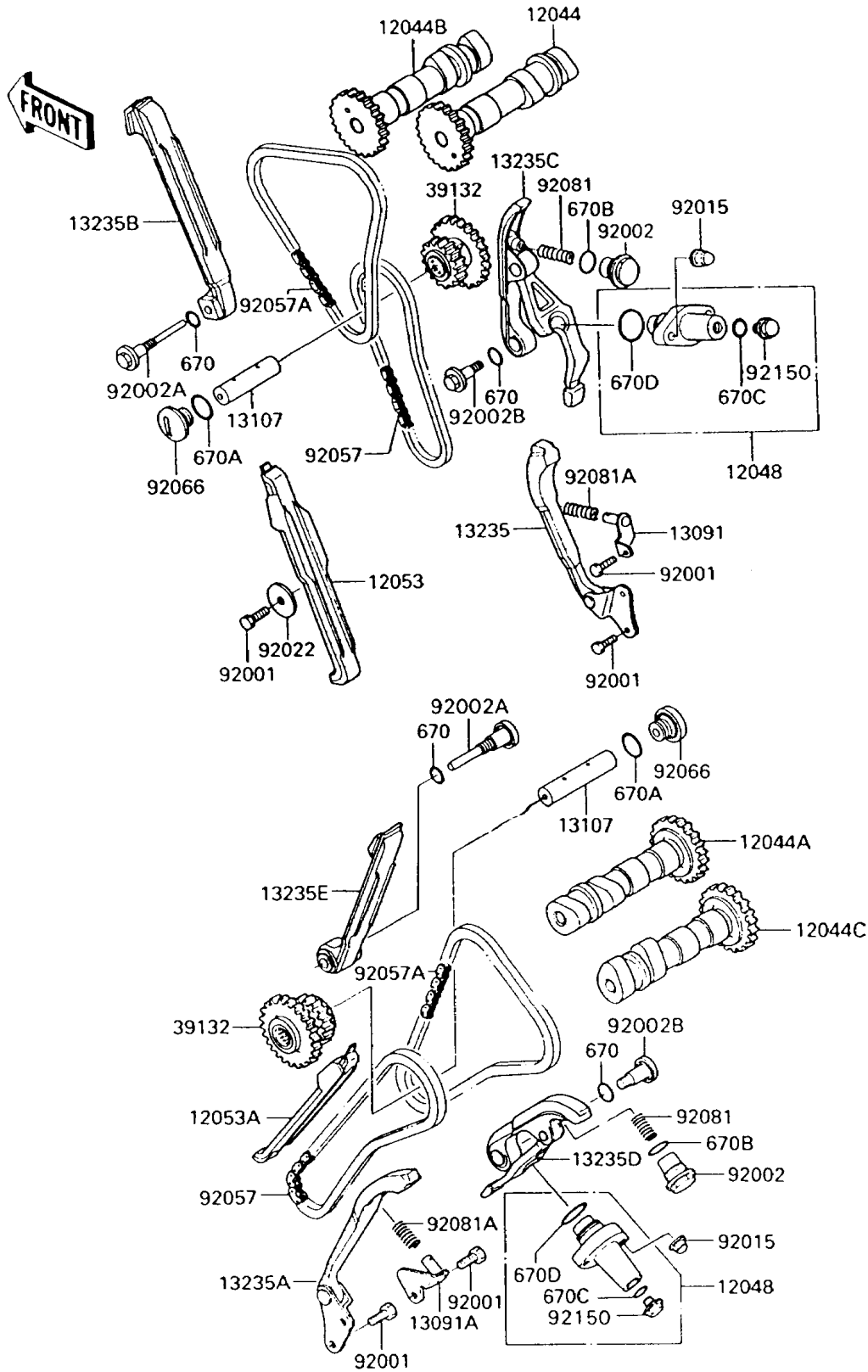


# 1997 Vulcan 750 PARTS DIAGRAM

Camshaft(s)/Tensioner

E1230



# 1997 Vulcan 750 PARTS LIST

## Camshaft(s)/Tensioner

ITEM NAME	PART NUMBER	QUANTITY
O RING,11MM (Ref # 670)	670B2011	4
O RING,16MM (Ref # 670A)	670B2016	2
O RING,18MM (Ref # 670B)	670B2018	2
O RING (Ref # 670C)	670D2010	2
O RING,21MM (Ref # 670D)	670D2021	2
CAMSHAFT-VALVE,INTAKE,FR (Ref # 12044)	12044-1341	1
CAMSHAFT-VALVE,INTAKE,RR (Ref # 12044A)	12044-1342	1
CAMSHAFT-VALVE,EXHAUST,FR (Ref # 12044B)	12044-1343	1
CAMSHAFT-VALVE,EXHAUST,RR (Ref # 12044C)	12044-1344	1
TENSIONER-ASSY (Ref # 12048)	12048-1072	2
GUIDE-CHAIN,FR,LWR (Ref # 12053)	12053-1161	1
GUIDE-CHAIN,RR,LWR (Ref # 12053A)	12053-1162	1
HOLDER,CHAIN GUIDE,FR (Ref # 13091)	13091-1367	1
HOLDER,CHAIN GUIDE,RR (Ref # 13091A)	13091-1368	1
SHAFT,IDLER (Ref # 13107)	13107-1145	2
GUIDE-COMP,FR,LWR (Ref # 13235)	13235-1051	1
GUIDE-COMP,RR,LWR (Ref # 13235A)	13235-1052	1
GUIDE-COMP,FR,UPP (Ref # 13235B)	13235-1053	1
GUIDE-COMP,FR,UPP (Ref # 13235C)	13235-1054	1
GUIDE-COMP,RR,UPP (Ref # 13235D)	13235-1055	1
GUIDE-COMP,RR,UPP (Ref # 13235E)	13235-1056	1
SPROCKET-ASSY-IDLER (Ref # 39132)	39132-1053	2
BOLT,6X16 (Ref # 92001)	92001-1457	7
BOLT,TENSIONER (Ref # 92002)	92002-1621	2
BOLT (Ref # 92002A)	92002-1731	2
BOLT (Ref # 92002B)	92002-1732	2
NUT,CAP,6MM (Ref # 92015)	92015-1385	4
WASHER,7X27X1.6 (Ref # 92022)	92022-227	1
CHAIN,LWR,75RH2015X82L (Ref # 92057)	92057-1192	2

# 1997 Vulcan 750 PARTS LIST

Camshaft(s)/Tensioner

ITEM NAME	PART NUMBER	QUANTITY
CHAIN,UPP,79RH2020X82L (Ref # 92057A)	92057-1193	2
PLUG,IDLER (Ref # 92066)	92066-1409	2
SPRING,TENSIONER (Ref # 92081)	92081-1380	2
SPRING (Ref # 92081A)	92081-1837	2
BOLT,TENSIONER (Ref # 92150)	92150-1381	2