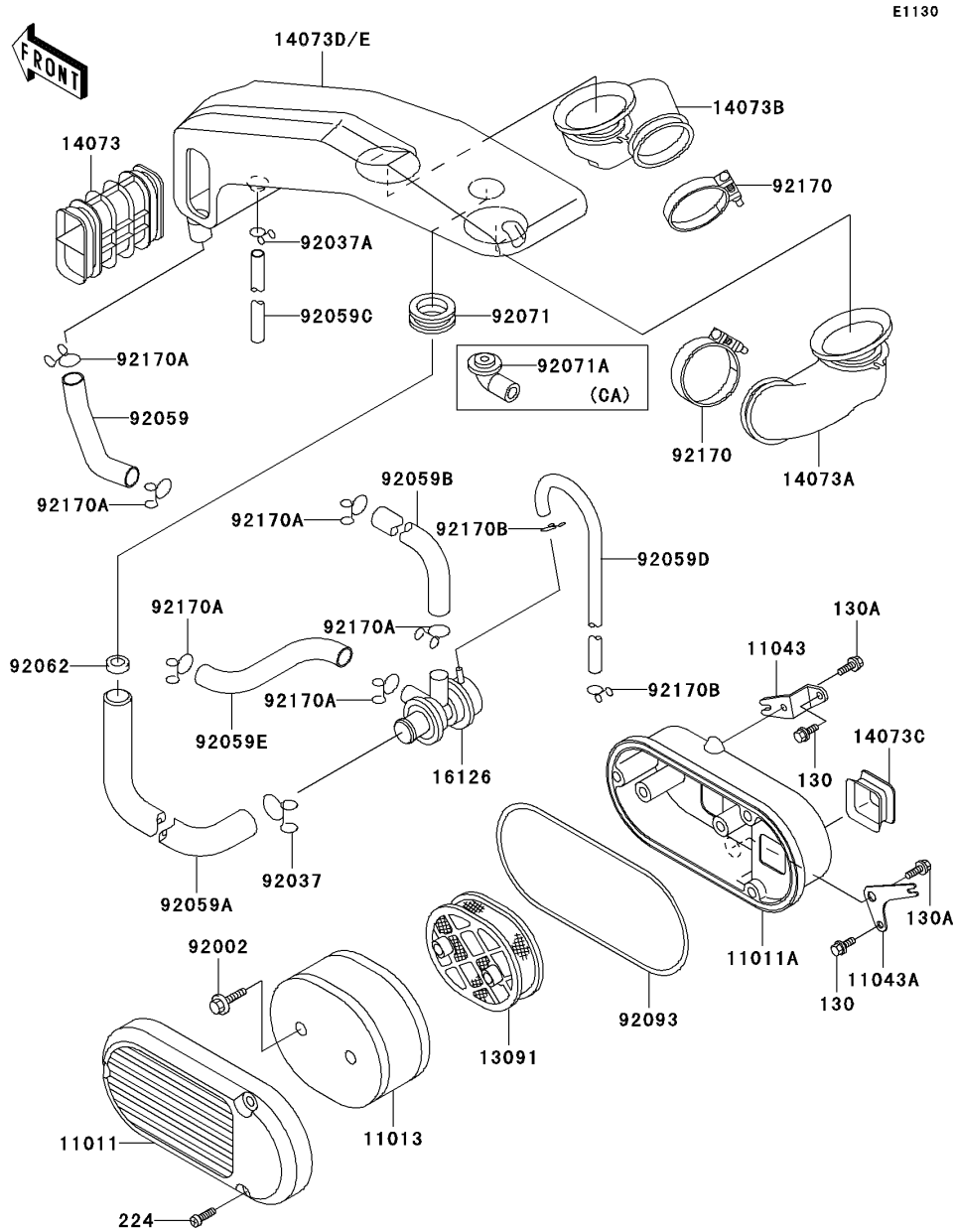


2003 Vulcan 750 PARTS DIAGRAM

Air Cleaner



E1130

2003 Vulcan 750 PARTS LIST

Air Cleaner

| ITEM NAME | PART NUMBER | QUANTITY |
|--|-------------|----------|
| BOLT-FLANGED,6X10,BLACK (Ref # 130) | 130C0610 | 4 |
| BOLT-FLANGED,6X12 (Ref # 130A) | 130C0612 | 4 |
| SCREW-PAN-WP-CROS (Ref # 224) | 224C0630 | 6 |
| CASE-AIR FILTER,OUTSIDE (Ref # 11011) | 11011-1181 | 2 |
| CASE-AIR FILTER,INSIDE (Ref # 11011A) | 11011-1225 | 2 |
| ELEMENT-AIR FILTER (Ref # 11013) | 11013-1122 | 2 |
| BRACKET,AIR FILTER CASE (Ref # 11043) | 11043-1181 | 2 |
| BRACKET,AIR FILTER CASE (Ref # 11043A) | 11043-1975 | 2 |
| HOLDER,ELEMENT (Ref # 13091) | 13091-1345 | 2 |
| DUCT,AIR FILTER (Ref # 14073) | 14073-1197 | 2 |
| DUCT,FR,CARBURATOR (Ref # 14073A) | 14073-1199 | 1 |
| DUCT,RR,CARBURATOR (Ref # 14073B) | 14073-1200 | 1 |
| DUCT,INLET (Ref # 14073C) | 14073-1209 | 2 |
| VALVE,AIR SWITCH (Ref # 16126) | 16126-1139 | 1 |
| BOLT,6X25 (Ref # 92002) | 92002-1137 | 4 |
| CLAMP,TUBE (Ref # 92037) | 92037-1076 | 1 |
| CLAMP,TUBE (Ref # 92037A) | 92037-147 | 1 |
| TUBE,15X20X116 (Ref # 92059) | 92059-1512 | 1 |
| TUBE,19X25X600 (Ref # 92059A) | 92059-1537 | 1 |
| TUBE (Ref # 92059B) | 92059-1587 | 1 |
| TUBE (Ref # 92059C) | 92059-1603 | 1 |
| TUBE,4X9X330 (Ref # 92059D) | 92059-1617 | 1 |
| TUBE (Ref # 92059E) | 92059-1618 | 1 |
| NOZZLE,7X20.3X10 (Ref # 92062) | 92062-1061 | 1 |
| GROMMET,AIR FILTER (Ref # 92071) | 92071-1013 | 1 |
| SEAL,AIR FILTER (Ref # 92093) | 92093-1177 | 2 |
| CLAMP (Ref # 92170) | 92170-1444 | 2 |
| CLAMP,TUBE (Ref # 92170A) | 92170-1445 | 6 |
| CLAMP (Ref # 92170B) | 92170-1450 | 2 |

2003 Vulcan 750 PARTS LIST

Air Cleaner

| ITEM NAME | PART NUMBER | QUANTITY |
|-----------------------------------|-------------|----------|
| DUCT,MAIN (Ref # 14073D) | 14073-1281 | 1 |
| DUCT,MAIN (Ref # 14073E) | 14073-1282 | 1 |
| GROMMET,AIR FILTER (Ref # 92071A) | 92071-1114 | 1 |