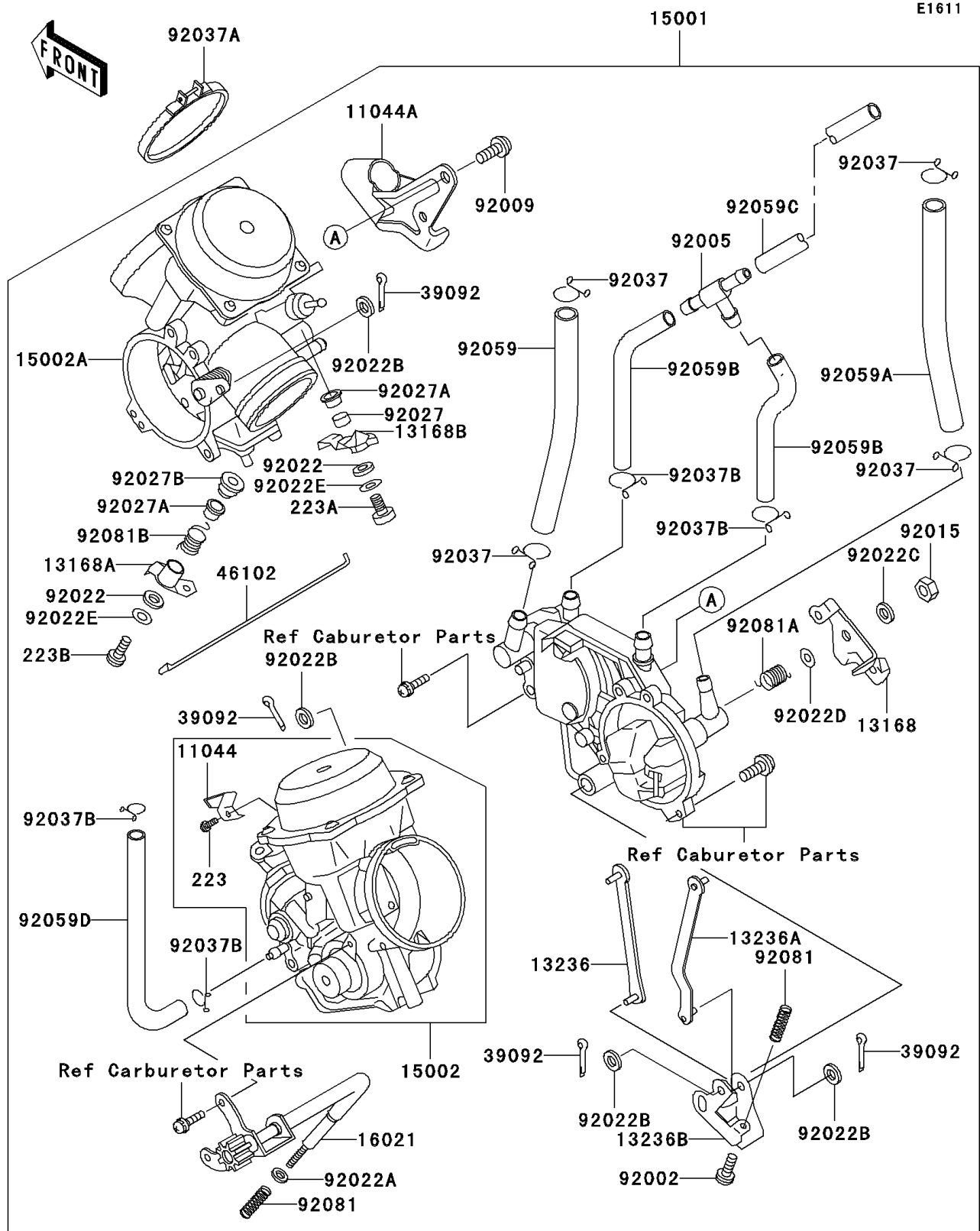


# 2000 Vulcan 750 PARTS DIAGRAM

Carburetor



## 2000 Vulcan 750 PARTS LIST

### Carburetor

| ITEM NAME                                  | PART NUMBER | QUANTITY |
|--|-------------|----------|
| SCREW-PAN-WS-CROS (Ref # 223)              | 223D0408    | 1        |
| SCREW-PAN-WS-CROS (Ref # 223A)             | 223D0414    | 1        |
| BRACKET (Ref # 11044)                      | 11044-1152  | 1        |
| BRACKET,THROTTLE CABLE (Ref # 11044A)      | 11044-1351  | 1        |
| LEVER,THROTTLE (Ref # 13168)               | 13168-1262  | 1        |
| LEVER,PLUNGER,FR (Ref # 13168A)            | 13168-1275  | 1        |
| LEVER,PLUNGER,RR (Ref # 13168B)            | 13168-1276  | 1        |
| LEVER-COMP,FR (Ref # 13236)                | 13236-1130  | 1        |
| LEVER-COMP,RR (Ref # 13236A)               | 13236-1131  | 1        |
| LEVER-COMP,THROTTLE (Ref # 13236B)         | 13236-1132  | 1        |
| CARBURETOR-ASSY (Ref # 15001)              | 15001-1306  | 1        |
| CARBURETOR,FR (Ref # 15002)                | 15002-1394  | 1        |
| CARBURETOR,RR (Ref # 15002A)               | 15002-1395  | 1        |
| SCREW-THROTTLE STOP (Ref # 16021)          | 16021-1112  | 1        |
| PIN-HAIR (Ref # 39092)                     | 39092-1051  | 4        |
| ROD,STARTER (Ref # 46102)                  | 46102-1141  | 1        |
| BOLT,THROTTLE ADJUST (Ref # 92002)         | 92002-1556  | 1        |
| FITTING,T-TYPE (Ref # 92005)               | 92005-1135  | 1        |
| SCREW,5X10 (Ref # 92009)                   | 92009-1365  | 1        |
| NUT,LOCK (Ref # 92015)                     | 92015-1526  | 1        |
| WASHER,6.1X11X0.8,POLYACETAL (Ref # 92022) | 92022-1199  | 2        |
| WASHER,PLAIN,STOP SPRING (Ref # 92022A)    | 92022-1480  | 1        |
| WASHER,3.1X8X0.5,POLYACETAL (Ref # 92022B) | 92022-1676  | 4        |
| WASHER,SPRING (Ref # 92022C)               | 92022-1708  | 1        |
| WASHER,8X16X1.1 (Ref # 92022D)             | 92022-1709  | 1        |
| WASHER,4X10X1.5 (Ref # 92022E)             | 92022-1721  | 2        |
| COLLAR (Ref # 92027)                       | 92027-1917  | 1        |
| COLLAR (Ref # 92027A)                      | 92027-1918  | 2        |
| COLLAR (Ref # 92027B)                      | 92027-1919  | 1        |

## 2000 Vulcan 750 PARTS LIST

### Carburetor

| ITEM NAME                                | PART NUMBER | QUANTITY |
|--|-------------|----------|
| CLAMP,FUEL HOSE (Ref # 92037)            | 92037-1158  | 4        |
| CLAMP (Ref # 92037A)                     | 92037-1637  | 2        |
| CLAMP,TUBE (Ref # 92037B)                | 92037-1682  | 4        |
| TUBE,FUEL,7.3X12.5X200 (Ref # 92059)     | 92059-1029  | 1        |
| TUBE,7.3X12.5X260 (Ref # 92059A)         | 92059-1492  | 1        |
| TUBE,7X11X55 (Ref # 92059B)              | 92059-1612  | 2        |
| TUBE,7X11X260 (Ref # 92059C)             | 92059-1613  | 1        |
| TUBE,5.3X10.5X100 (Ref # 92059D)         | 92059-1623  | 1        |
| SPRING,THROTTLE STOP SCREW (Ref # 92081) | 92081-1617  | 2        |
| SPRING,THROTTLE LEVER (Ref # 92081A)     | 92081-1841  | 1        |
| SPRING,PLUNGER LEVER (Ref # 92081B)      | 92081-1842  | 1        |
| SCREW-PAN-WS-CROS (Ref # 223B)           | 223D0420    | 1        |