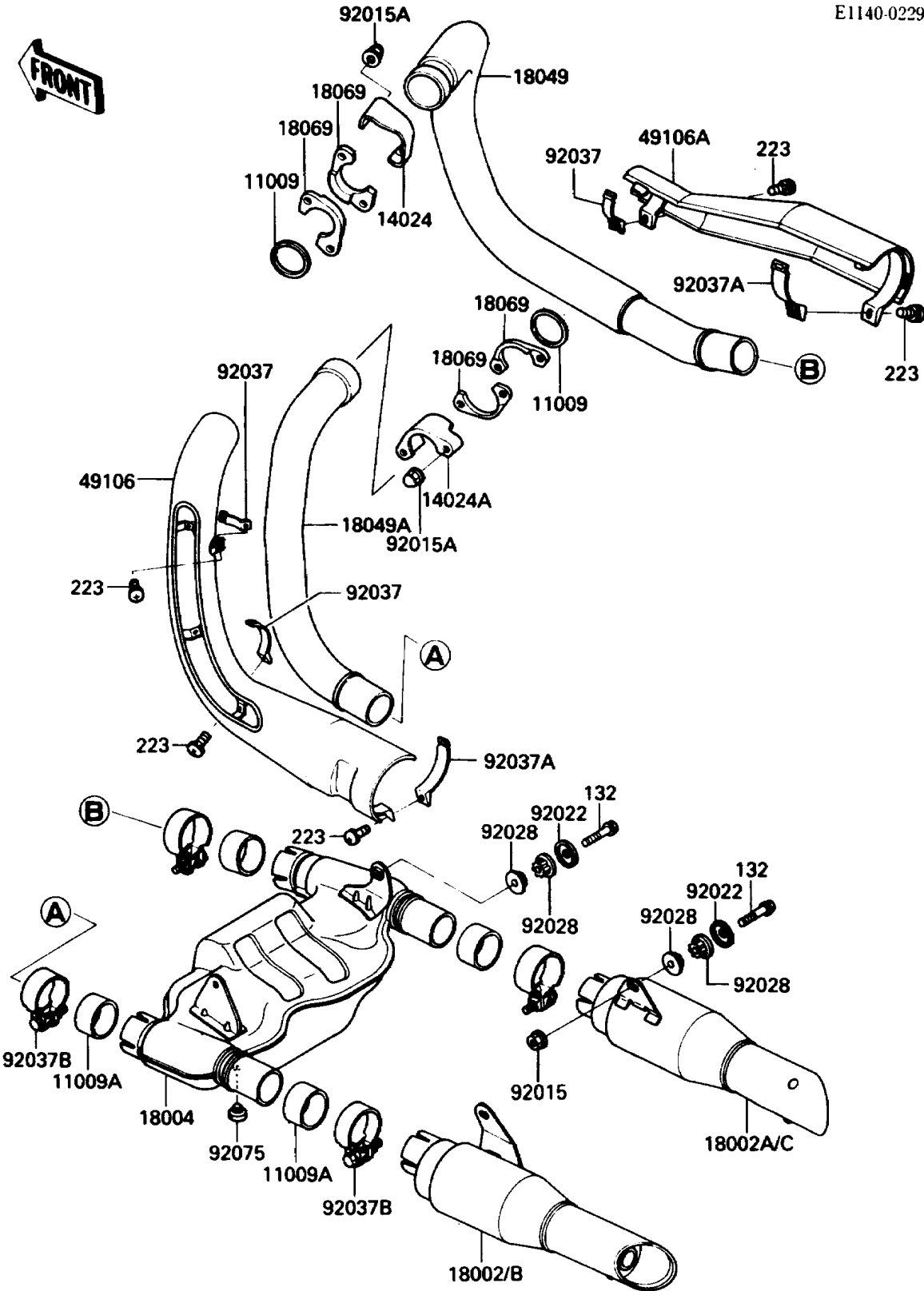


1988 Vulcan 750 PARTS DIAGRAM

Muffler(s)

E1140-0229



1988 Vulcan 750 PARTS LIST

Muffler(s)

ITEM NAME	PART NUMBER	QUANTITY
GASKET,EXHAUST PIPE (Ref # 11009)	11009-1476	2
GASKET,EXHAUST PIPE CONNECTING (Ref # 11009A)	11009-1480	4
COVER,FR (Ref # 14024)	14024-1091	1
COVER,RR (Ref # 14024A)	14024-1092	1
BODY-COMP-MUFFLER,LH (Ref # 18002B)	18002-1701	1
BODY-COMP-MUFFLER,RH (Ref # 18002C)	18002-1702	1
CHAMBER-PREMUFFLER (Ref # 18004)	18004-1055	1
PIPE-EXHAUST,FR (Ref # 18049)	18049-1373	1
PIPE-EXHAUST,RR (Ref # 18049A)	18049-1374	1
HOLDER-EXHAUST PIPE (Ref # 18069)	18069-1061	4
COVER-MUFFLER,LH (Ref # 49106)	49106-1053	1
COVER-MUFFLER,RH (Ref # 49106A)	49106-1054	1
NUT,FLANGED,8MM (Ref # 92015)	92015-1014	2
NUT,CAP,8MM (Ref # 92015A)	92015-1371	4
WASHER,CAP TYPE (Ref # 92022)	92022-1638	4
BUSHING-RUBBER,MUFFLER (Ref # 92028)	92028-1329	8
CLAMP,EXHAUST PIPE COVER (Ref # 92037)	92037-1613	3
CLAMP,MUFFLER COVER (Ref # 92037A)	92037-1615	2
CLAMP,52MM (Ref # 92037B)	92037-1633	4
DAMPER (Ref # 92075)	92075-005	1
BOLT-FLANGED-SMALL (Ref # 132)	132E0840	4
SCREW-PAN-WS-CROS (Ref # 223)	223X0620	5