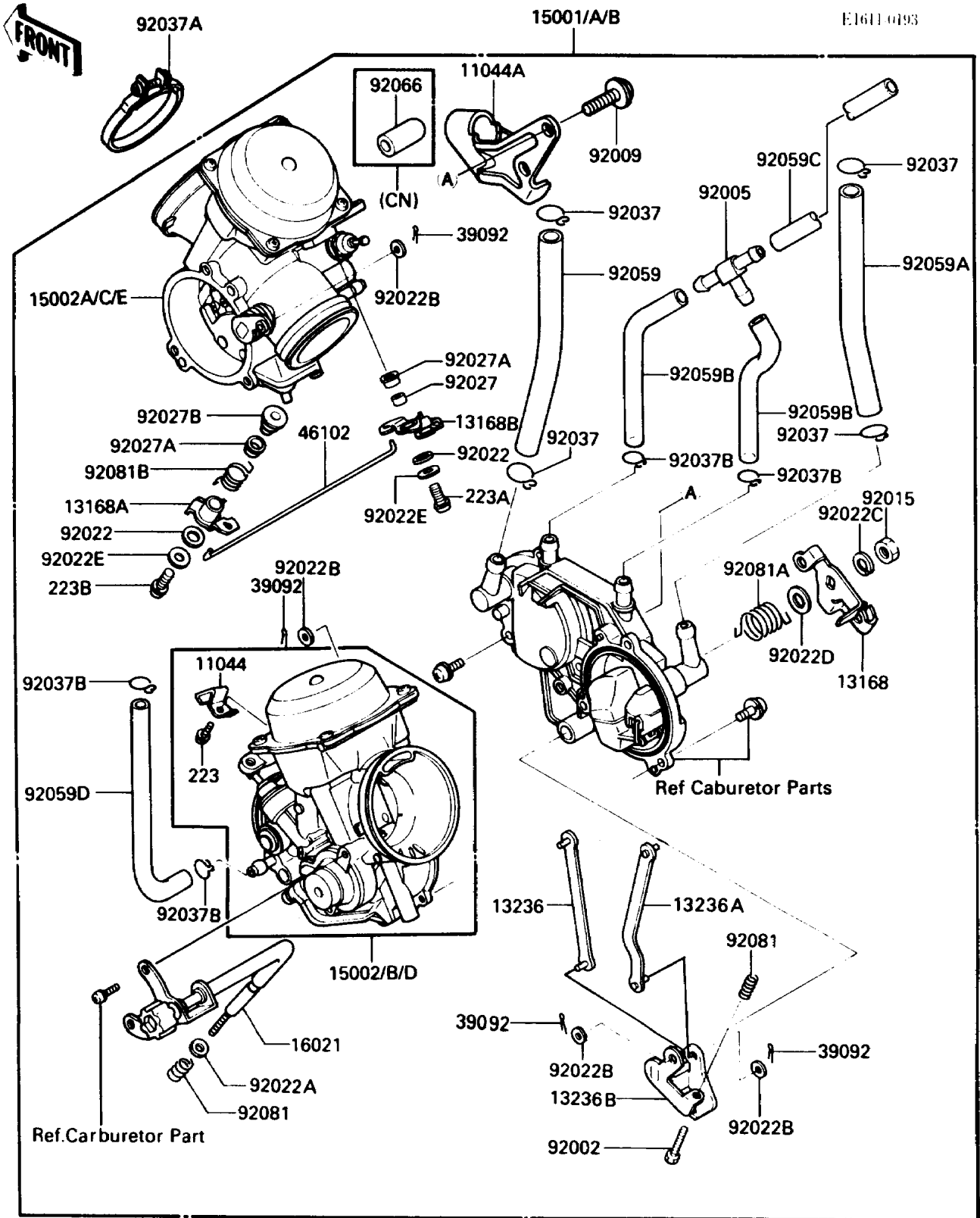


1986 Vulcan 750 PARTS DIAGRAM

Carburetor



1986 Vulcan 750 PARTS LIST

Carburetor

ITEM NAME	PART NUMBER	QUANTITY
BRACKET (Ref # 11044)	11044-1152	1
BRACKET,THROTTLE CABLE (Ref # 11044A)	11044-1351	1
LEVER,THROTTLE (Ref # 13168)	13168-1262	1
LEVER,PLUNGER,FR (Ref # 13168A)	13168-1275	1
LEVER,PLUNGER,RR (Ref # 13168B)	13168-1276	1
LEVER-COMP,FR (Ref # 13236)	13236-1130	1
LEVER-COMP,RR (Ref # 13236A)	13236-1131	1
LEVER-COMP,THROTTLE (Ref # 13236B)	13236-1132	1
CARBURETOR-ASSY (Ref # 15001)	15001-1149	1
CARBURETOR-ASSY (Ref # 15001A)	15001-1221	1
CARBURETOR,FR (Ref # 15002)	15002-1222	1
CARBURETOR,RR (Ref # 15002A)	15002-1224	1
CARBURETOR,FR (Ref # 15002B)	15002-1312	1
CARBURETOR,RR (Ref # 15002C)	15002-1313	1
SCREW-THROTTLE STOP (Ref # 16021)	16021-1112	1
PIN-HAIR (Ref # 39092)	39092-1051	4
ROD,STARTER (Ref # 46102)	46102-1141	1
BOLT,THROTTLE ADJUST (Ref # 92002)	92002-1556	1
FITTING,T-TYPE (Ref # 92005)	92005-1135	1
SCREW,5X10 (Ref # 92009)	92009-1365	1
NUT,LOCK (Ref # 92015)	92015-1526	1
WASHER,6.1X11X0.8,POLYACETAL (Ref # 92022)	92022-1199	2
WASHER,PLAIN,STOP SPRING (Ref # 92022A)	92022-1480	1
WASHER,3.1X8X0.5,POLYACETAL (Ref # 92022B)	92022-1676	4
WASHER,SPRING (Ref # 92022C)	92022-1708	1
WASHER,8X16X1.1 (Ref # 92022D)	92022-1709	1
WASHER,4X10X1.5 (Ref # 92022E)	92022-1721	2
COLLAR (Ref # 92027)	92027-1917	1
COLLAR (Ref # 92027A)	92027-1918	2

1986 Vulcan 750 PARTS LIST

Carburetor

ITEM NAME	PART NUMBER	QUANTITY
COLLAR (Ref # 92027B)	92027-1919	1
CLAMP,FUEL HOSE (Ref # 92037)	92037-1158	4
CLAMP (Ref # 92037A)	92037-1637	2
CLAMP,TUBE (Ref # 92037B)	92037-1682	4
TUBE,FUEL,7.3X12.5X200 (Ref # 92059)	92059-1029	1
TUBE,7.3X12.5X260 (Ref # 92059A)	92059-1492	1
TUBE,7X11X55 (Ref # 92059B)	92059-1612	2
TUBE,7X11X260 (Ref # 92059C)	92059-1613	1
TUBE,5.3X10.5X100 (Ref # 92059D)	92059-1623	1
PLUG,12X25 (Ref # 92066)	92068-006	1
SPRING,THROTTLE STOP SCREW (Ref # 92081)	92081-1617	2
SPRING,THROTTLE LEVER (Ref # 92081A)	92081-1841	1
SPRING,PLUNGER LEVER (Ref # 92081B)	92081-1842	1
SCREW-PAN-WS-CROS (Ref # 223)	223D0408	1
SCREW-PAN-WS-CROS (Ref # 223A)	223D0414	1
SCREW-PAN-WS-CROS (Ref # 223B)	223D0420	1