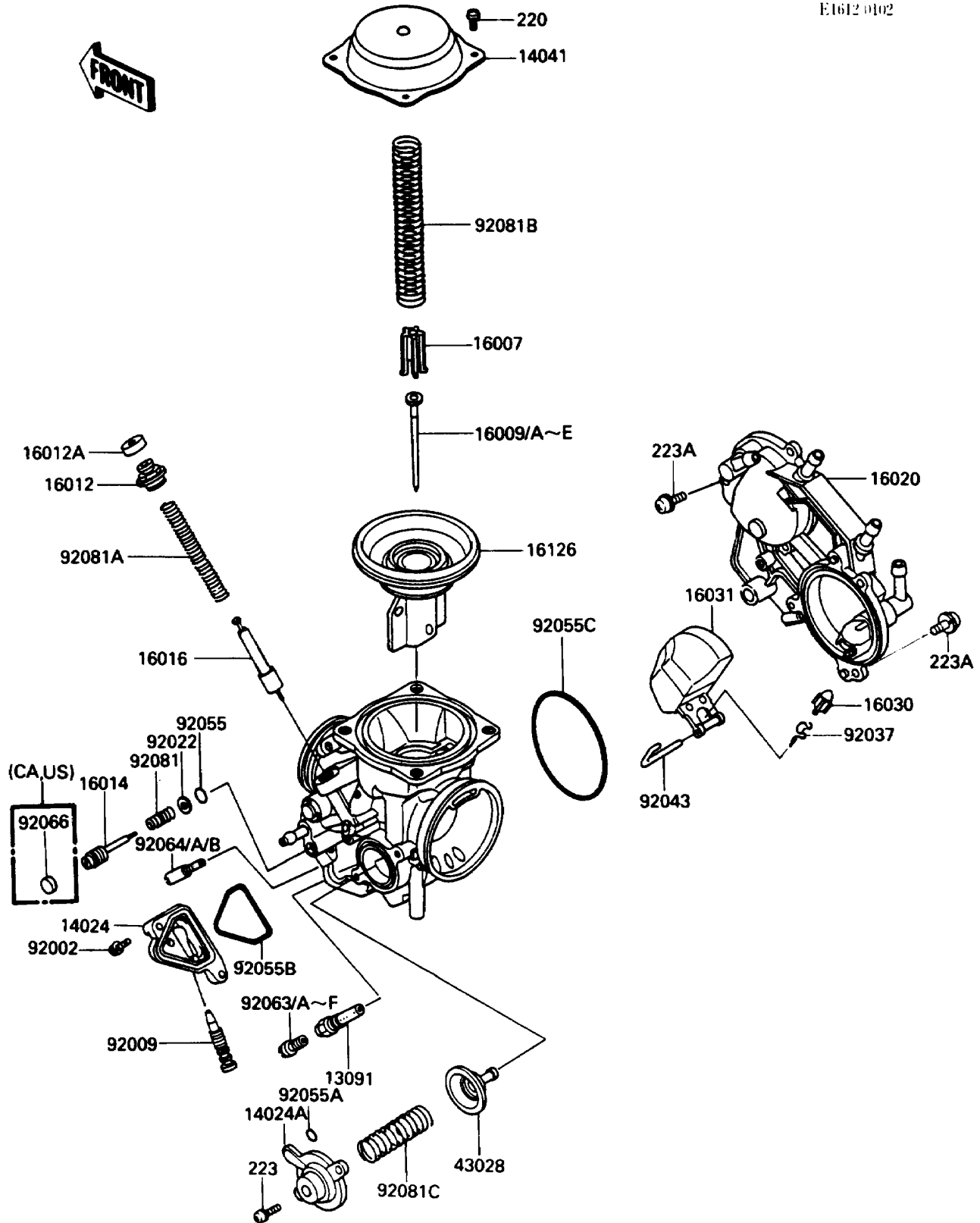


# 1988 Vulcan 750 PARTS DIAGRAM

## Carburetor Parts

E1612 0102



# 1988 Vulcan 750 PARTS LIST

## Carburetor Parts

| ITEM NAME                              | PART NUMBER | QUANTITY |
|--|-------------|----------|
| HOLDER,NEEDLE JET (Ref # 13091)        | 13091-1384  | 2        |
| COVER,DRAIN (Ref # 14024)              | 14024-1094  | 2        |
| COVER,AIR CUT VALVE (Ref # 14024A)     | 14025-1903  | 2        |
| COVER-COMP,MIXING,INSIDE (Ref # 14041) | 14041-1061  | 2        |
| SEAT-SPRING,VALVE (Ref # 16007)        | 16007-1117  | 2        |
| NEEDLE-JET,N53A,FR (Ref # 16009D)      | 16009-1327  | 1        |
| NEEDLE-JET,N53B,RR (Ref # 16009E)      | 16009-1328  | 1        |
| CAP-STARTER PLUNGER (Ref # 16012)      | 16012-1051  | 2        |
| CAP-STARTER PLUNGER (Ref # 16012A)     | 16012-1052  | 2        |
| SCREW-PILOT AIR (Ref # 16014)          | 16014-1054  | 2        |
| PLUNGER,STARTER (Ref # 16016)          | 16016-1066  | 2        |
| CHAMBER-FLOAT,COMP (Ref # 16020)       | 16020-1051  | 1        |
| VALVE-FLOAT (Ref # 16030)              | 16030-1057  | 2        |
| FLOAT (Ref # 16031)                    | 16031-1059  | 2        |
| VALVE,VACUUM,60PS (Ref # 16126)        | 16126-1173  | 2        |
| DIAPHRAGM,AIR CUT VALVE (Ref # 43028)  | 43028-1053  | 2        |
| BOLT,4X14 (Ref # 92002)                | 92002-1761  | 4        |
| SCREW,DRAIN,M6X1.0 (Ref # 92009)       | 92009-1434  | 2        |
| WASHER,PLAIN (Ref # 92022)             | 92022-1003  | 2        |
| CLAMP,FLOAT VALVE (Ref # 92037)        | 16044-007   | 2        |
| PIN,FLOAT (Ref # 92043)                | 92043-1285  | 2        |
| RING-O,PILOT ADJUST (Ref # 92055)      | 92055-1002  | 2        |
| RING-O (Ref # 92055A)                  | 92055-1245  | 2        |
| RING-O (Ref # 92055B)                  | 92055-1290  | 2        |
| RING-O (Ref # 92055C)                  | 92055-1291  | 2        |
| JET-MAIN,#135 (Ref # 92063)            | 92063-1014  | 2        |
| JET-MAIN,#138 (Ref # 92063A)           | 92063-1015  | 2        |
| JET-MAIN,2ND,#125 (Ref # 92063B)       | 92063-1069  | 2        |
| JET-MAIN,2ND,#122 (Ref # 92063C)       | 92063-1073  | 2        |

# 1988 Vulcan 750 PARTS LIST

## Carburetor Parts

| ITEM NAME                                | PART NUMBER | QUANTITY |
|--|-------------|----------|
| JET-MAIN,2ND,#128 (Ref # 92063D)         | 92063-1074  | 2        |
| JET-MAIN,#130 (Ref # 92063E)             | 92063-1075  | 2        |
| JET-MAIN,#132 (Ref # 92063F)             | 92063-1076  | 2        |
| JET-PILOT,#38 (Ref # 92064)              | 92064-1118  | 2        |
| JET-PILOT,#35 (Ref # 92064A)             | 92064-1123  | 2        |
| PLUG,PILOT AIR SCREW,6.9X2 (Ref # 92066) | 92066-1051  | 2        |
| SPRING,PILOT ADJUST SCREW (Ref # 92081)  | 92081-1002  | 2        |
| SPRING,STARTER PLUNGER (Ref # 92081A)    | 92081-1761  | 2        |
| SPRING,VACUUM VALVE (Ref # 92081B)       | 92081-1874  | 2        |
| SPRING,AIR CUT VALVE (Ref # 92081C)      | 92081-1891  | 2        |
| SCREW-PAN-CROS (Ref # 220)               | 220D0408    | 8        |
| SCREW-PAN-WS-CROS (Ref # 223)            | 223D0410    | 4        |
| SCREW-PAN-WS-CROS (Ref # 223A)           | 223D0512    | 6        |