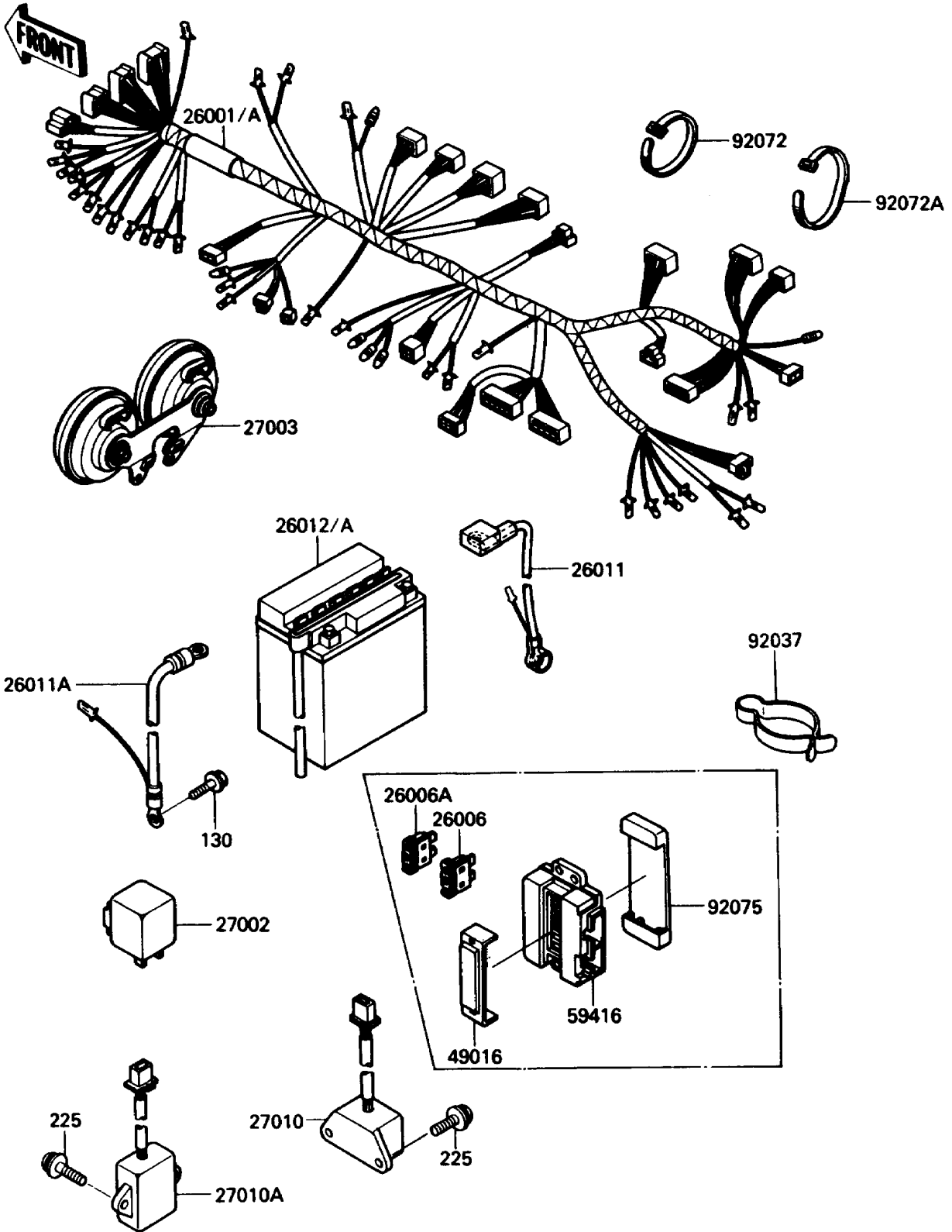


1988 Vulcan 750 PARTS DIAGRAM

Chassis Electrical Equipment

F2760-0341



1988 Vulcan 750 PARTS LIST

Chassis Electrical Equipment

ITEM NAME	PART NUMBER	QUANTITY
HARNESS,MAIN (Ref # 26001)	26001-1690	1
FUSE,30A-G (Ref # 26006)	26006-1006	2
FUSE,10A-R (Ref # 26006A)	26006-1007	4
WIRE-LEAD,BATTERY(+) (Ref # 26011)	26011-1310	1
WIRE-LEAD,BATTERY(-) (Ref # 26011A)	26011-1311	1
BATTERY,12V 14AH,YB14L-A2 (Ref # 26012)	26012-1179	1
RELAY-ASSY,TURN SIGNAL (Ref # 27002)	27002-1060	1
HORN,DOUBLE (Ref # 27003)	27003-1218	1
SWITCH,RESERVE LIGHTING (Ref # 27010)	27010-1069	1
SWITCH,TURN SIGNAL OPERATION (Ref # 27010A)	27010-1153	1
COVER-SEAL,FUSE (Ref # 49016)	49016-1106	1
CASE-ELECTRIC,FUSE & RELAY BOX (Ref # 59416)	59416-1052	1
CLAMP,CABLE (Ref # 92037)	92037-093	1
BAND,L=149 (Ref # 92072)	92072-031	4
BAND,L=186 (Ref # 92072A)	92072-056	7
DAMPER,JUNCTION BOX (Ref # 92075)	92075-1688	1
BOLT-FLANGED,6X10 (Ref # 130)	130B0610	1
SCREW-PAN-WSP-CROS (Ref # 225)	225B0620	4