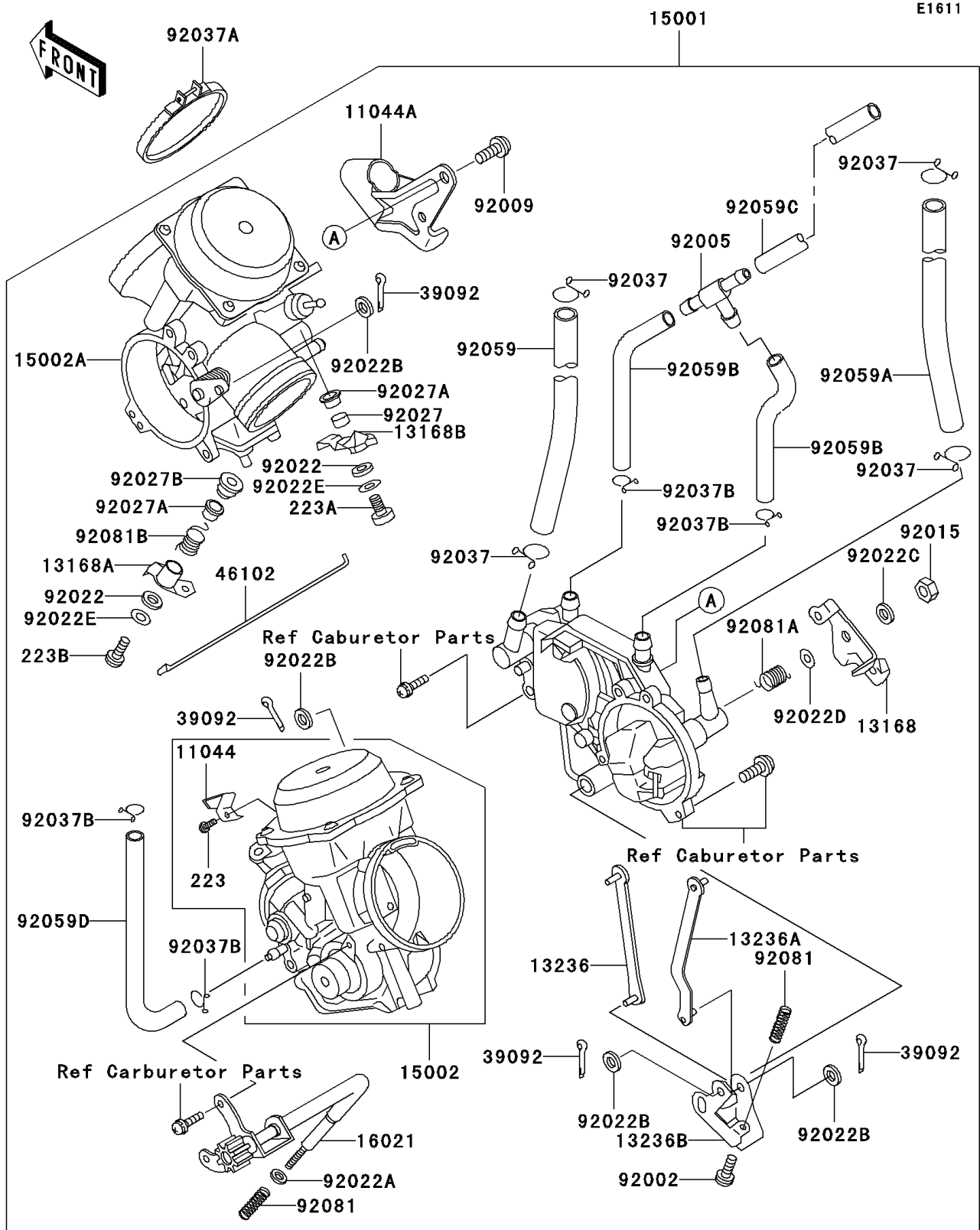


2005 Vulcan 750 PARTS DIAGRAM

Carburetor



2005 Vulcan 750 PARTS LIST

Carburetor

| ITEM NAME | PART NUMBER | QUANTITY |
|--|-------------|----------|
| BRACKET (Ref # 11044) | 11044-1152 | 1 |
| BRACKET,THROTTLE CABLE (Ref # 11044A) | 11044-1351 | 1 |
| LEVER,THROTTLE (Ref # 13168) | 13168-1262 | 1 |
| LEVER,PLUNGER,FR (Ref # 13168A) | 13168-1275 | 1 |
| LEVER,PLUNGER,RR (Ref # 13168B) | 13168-1276 | 1 |
| LEVER-COMP,FR (Ref # 13236) | 13236-1130 | 1 |
| LEVER-COMP,RR (Ref # 13236A) | 13236-1131 | 1 |
| LEVER-COMP,THROTTLE (Ref # 13236B) | 13236-1132 | 1 |
| CARBURETOR-ASSY (Ref # 15001) | 15001-1306 | 1 |
| CARBURETOR,FR (Ref # 15002) | 15002-1394 | 1 |
| CARBURETOR,RR (Ref # 15002A) | 15002-1395 | 1 |
| SCREW-THROTTLE STOP (Ref # 16021) | 16021-1112 | 1 |
| PIN-HAIR (Ref # 39092) | 39092-1051 | 4 |
| ROD,STARTER (Ref # 46102) | 46102-1141 | 1 |
| BOLT,THROTTLE ADJUST (Ref # 92002) | 92002-1556 | 1 |
| FITTING,T-TYPE (Ref # 92005) | 92005-1135 | 1 |
| SCREW,5X10 (Ref # 92009) | 92009-1365 | 1 |
| NUT,LOCK (Ref # 92015) | 92015-1526 | 1 |
| WASHER,6.1X11X0.8,POLYACETAL (Ref # 92022) | 92022-1199 | 2 |
| WASHER,PLAIN,STOP SPRING (Ref # 92022A) | 92022-1480 | 1 |
| WASHER,3.1X8X0.5,POLYACETAL (Ref # 92022B) | 92022-1676 | 4 |
| WASHER,SPRING (Ref # 92022C) | 92022-1708 | 1 |
| WASHER,8X16X1.1 (Ref # 92022D) | 92022-1709 | 1 |
| WASHER,4X10X1.5 (Ref # 92022E) | 92022-1721 | 2 |
| COLLAR (Ref # 92027) | 92027-1917 | 1 |
| COLLAR (Ref # 92027A) | 92027-1918 | 2 |
| COLLAR (Ref # 92027B) | 92027-1919 | 1 |
| CLAMP,FUEL HOSE (Ref # 92037) | 92037-1158 | 4 |
| CLAMP (Ref # 92037A) | 92037-1637 | 2 |

2005 Vulcan 750 PARTS LIST

Carburetor

| ITEM NAME | PART NUMBER | QUANTITY |
|--|-------------|----------|
| CLAMP,TUBE (Ref # 92037B) | 92037-1682 | 4 |
| TUBE,FUEL,7.3X12.5X200 (Ref # 92059) | 92059-1029 | 1 |
| TUBE,7.3X12.5X260 (Ref # 92059A) | 92059-1492 | 1 |
| TUBE,7X11X55 (Ref # 92059B) | 92059-1612 | 2 |
| TUBE,7X11X260 (Ref # 92059C) | 92059-1613 | 1 |
| TUBE,5.3X10.5X100 (Ref # 92059D) | 92059-1623 | 1 |
| SPRING,THROTTLE STOP SCREW (Ref # 92081) | 92081-1617 | 2 |
| SPRING,THROTTLE LEVER (Ref # 92081A) | 92081-1841 | 1 |
| SPRING,PLUNGER LEVER (Ref # 92081B) | 92081-1842 | 1 |
| SCREW-PAN-WS-CROS (Ref # 223) | 223D0408 | 1 |
| SCREW-PAN-WS-CROS (Ref # 223A) | 223D0414 | 1 |
| SCREW-PAN-WS-CROS (Ref # 223B) | 223D0420 | 1 |