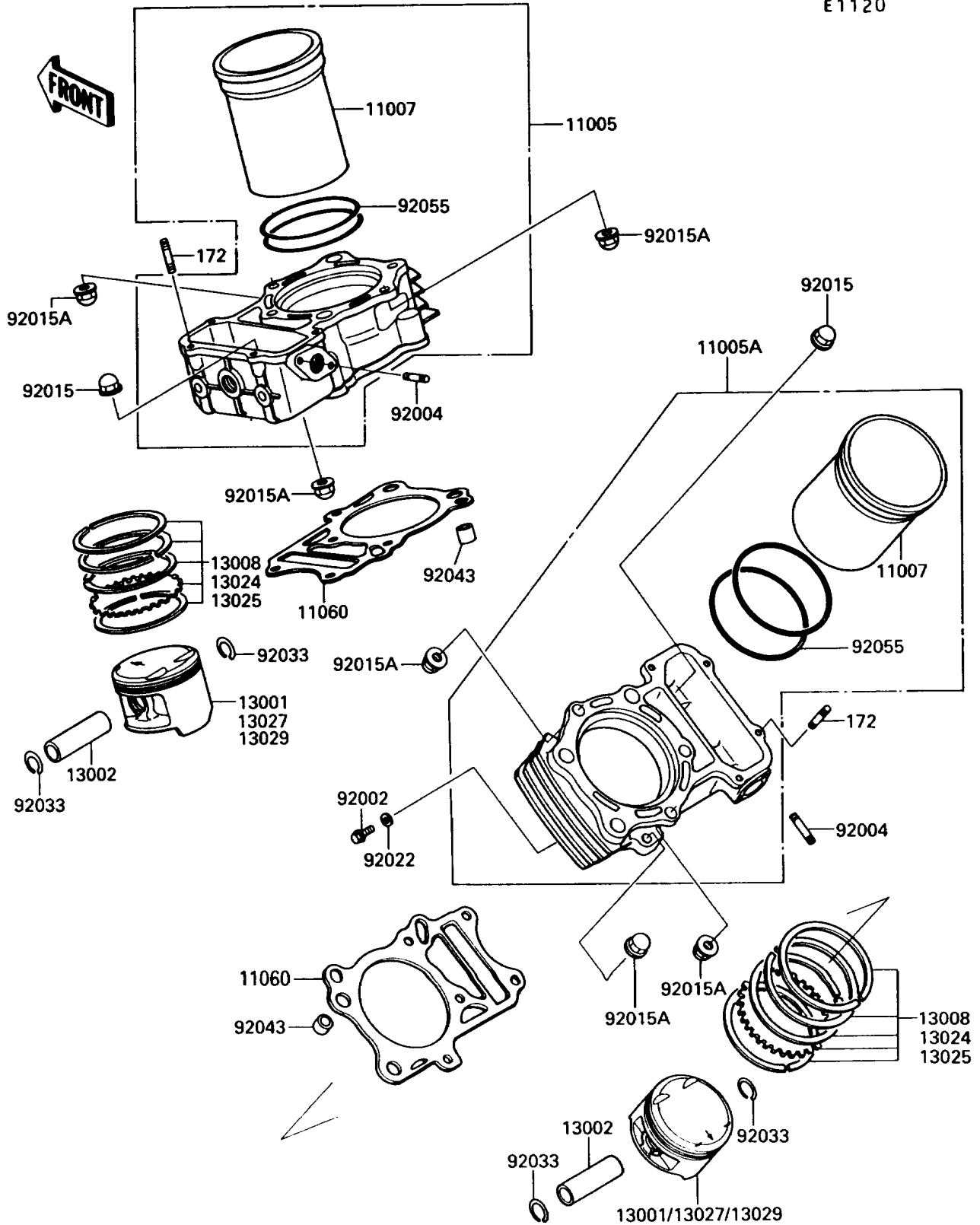


1990 Vulcan 750 PARTS DIAGRAM

Cylinder/Piston

E1120



1990 Vulcan 750 PARTS LIST

Cylinder/Piston

| ITEM NAME | PART NUMBER | QUANTITY |
|---|-------------|----------|
| BOLT-STUD,6X20 (Ref # 172) | 172G0620 | 4 |
| CYLINDER-ENGINE,FR (Ref # 11005) | 11005-1481 | 1 |
| CYLINDER-ENGINE,RR (Ref # 11005A) | 11005-1483 | 1 |
| LINER-CYLINDER (Ref # 11007) | 11007-1073 | 2 |
| GASKET,CYLINDER BASE (Ref # 11060) | 11060-1084 | 2 |
| PISTON-ENGINE,STD (Ref # 13001) | 13001-1215 | 2 |
| PIN-PISTON (Ref # 13002) | 13002-1056 | 2 |
| RING-SET-PISTON,STD (Ref # 13008) | 13008-1077 | 2 |
| RING-SET-PISTON LL,O/S 1.00 (Ref # 13024) | 13024-1069 | 2 |
| RING-SET-PISTON L,O/S 0.50 (Ref # 13025) | 13025-1076 | 2 |
| PISTON-ENGINE LL,O/S,1.00 (Ref # 13027) | 13027-1128 | 2 |
| PISTON-ENGINE L,O/S,0.50 (Ref # 13029) | 13029-1128 | 2 |
| BOLT,6X10 (Ref # 92002) | 92002-1628 | 2 |
| STUD,6X18 (Ref # 92004) | 92004-1154 | 4 |
| NUT,8MM (Ref # 92015) | 92015-1143 | 4 |
| NUT,CAP,8MM (Ref # 92015A) | 92015-1371 | 6 |
| WASHER,6.1X12X1 (Ref # 92022) | 92022-077 | 2 |
| RING-SNAP (Ref # 92033) | 92033-1188 | 4 |
| PIN,11X14X12.3 (Ref # 92043) | 92043-1266 | 4 |
| RING-O,92MM (Ref # 92055) | 92055-1274 | 4 |