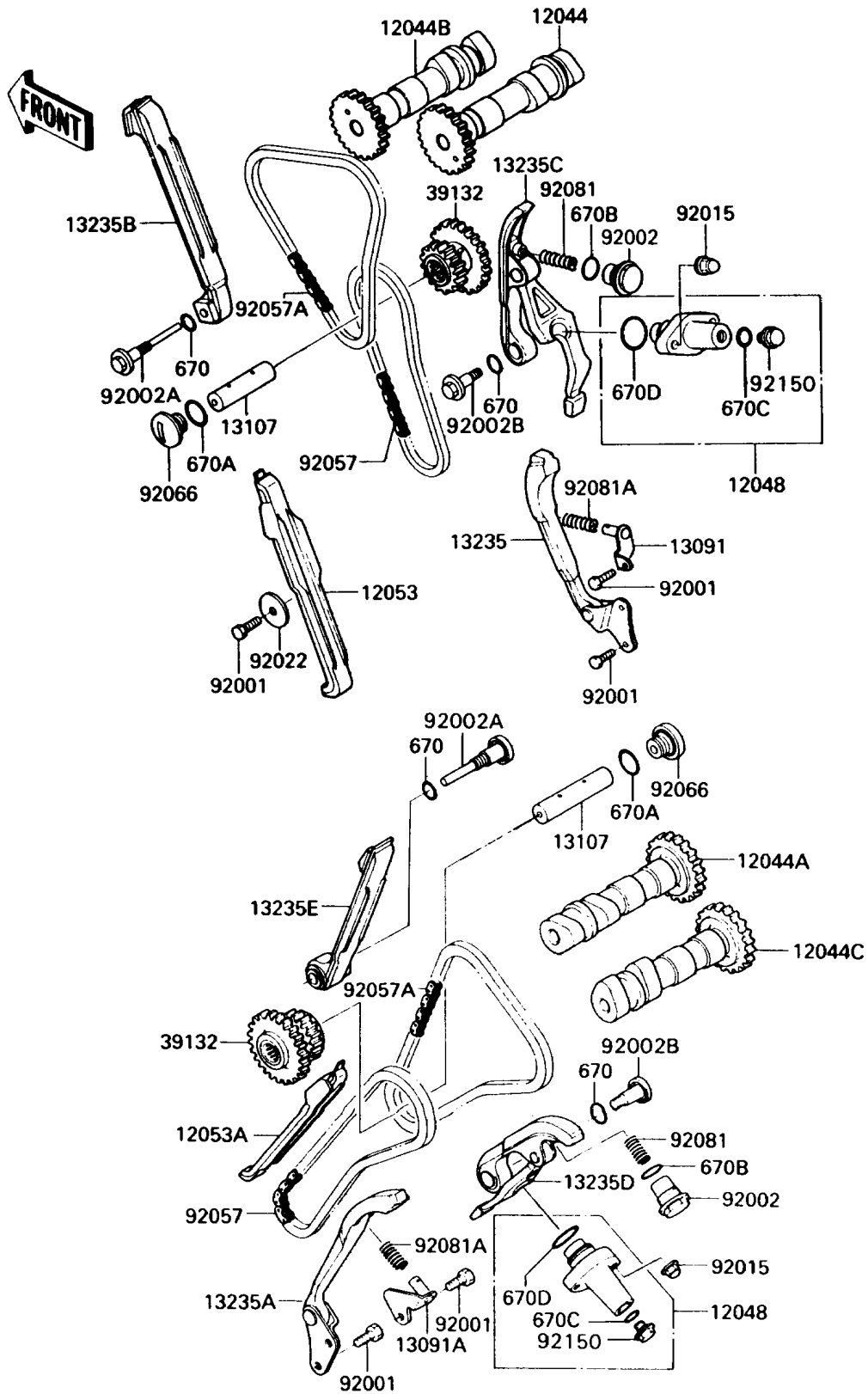


1992 Vulcan 750 PARTS DIAGRAM

Camshaft/Tensioner

E1230



1992 Vulcan 750 PARTS LIST

Camshaft/Tensioner

| ITEM NAME | PART NUMBER | QUANTITY |
|--|-------------|----------|
| O RING,11MM (Ref # 670) | 670B2011 | 4 |
| O RING,16MM (Ref # 670A) | 670B2016 | 2 |
| O RING,18MM (Ref # 670B) | 670B2018 | 2 |
| O RING (Ref # 670C) | 670D2010 | 2 |
| O RING,21MM (Ref # 670D) | 670D2021 | 2 |
| CAMSHAFT-VALVE,INTAKE,FR (Ref # 12044) | 12044-1144 | 1 |
| CAMSHAFT-VALVE,INTAKE,RR (Ref # 12044A) | 12044-1145 | 1 |
| CAMSHAFT-VALVE,EXHAUST,FR (Ref # 12044B) | 12044-1146 | 1 |
| CAMSHAFT-VALVE,EXHAUST,RR (Ref # 12044C) | 12044-1147 | 1 |
| TENSIONER-ASSY (Ref # 12048) | 12048-1072 | 2 |
| GUIDE-CHAIN,FR,LWR (Ref # 12053) | 12053-1161 | 1 |
| GUIDE-CHAIN,RR,LWR (Ref # 12053A) | 12053-1162 | 1 |
| HOLDER,CHAIN GUIDE,FR (Ref # 13091) | 13091-1367 | 1 |
| HOLDER,CHAIN GUIDE,RR (Ref # 13091A) | 13091-1368 | 1 |
| SHAFT,IDLER (Ref # 13107) | 13107-1145 | 2 |
| GUIDE-COMP,FR,LWR (Ref # 13235) | 13235-1051 | 1 |
| GUIDE-COMP,RR,LWR (Ref # 13235A) | 13235-1052 | 1 |
| GUIDE-COMP,FR,UPP (Ref # 13235B) | 13235-1053 | 1 |
| GUIDE-COMP,FR,UPP (Ref # 13235C) | 13235-1054 | 1 |
| GUIDE-COMP,RR,UPP (Ref # 13235D) | 13235-1055 | 1 |
| GUIDE-COMP,RR,UPP (Ref # 13235E) | 13235-1056 | 1 |
| SPROCKET-ASSY-IDLER (Ref # 39132) | 39132-1053 | 2 |
| BOLT,6X16 (Ref # 92001) | 92001-1457 | 7 |
| BOLT,TENSIONER (Ref # 92002) | 92002-1621 | 2 |
| BOLT (Ref # 92002A) | 92002-1731 | 2 |
| BOLT (Ref # 92002B) | 92002-1732 | 2 |
| NUT,CAP,6MM (Ref # 92015) | 92015-1385 | 4 |
| WASHER,7X27X1.6 (Ref # 92022) | 92022-227 | 1 |
| CHAIN,LWR,75RH2015X82L (Ref # 92057) | 92057-1192 | 2 |

1992 Vulcan 750 PARTS LIST

Camshaft/Tensioner

| ITEM NAME | PART NUMBER | QUANTITY |
|---------------------------------------|-------------|----------|
| CHAIN,UPP,79RH2020X82L (Ref # 92057A) | 92057-1193 | 2 |
| PLUG,IDLER (Ref # 92066) | 92066-1236 | 2 |
| SPRING,TENSIONER (Ref # 92081) | 92081-1380 | 2 |
| SPRING (Ref # 92081A) | 92081-1837 | 2 |
| BOLT,TENSIONER (Ref # 92150) | 92150-1381 | 2 |