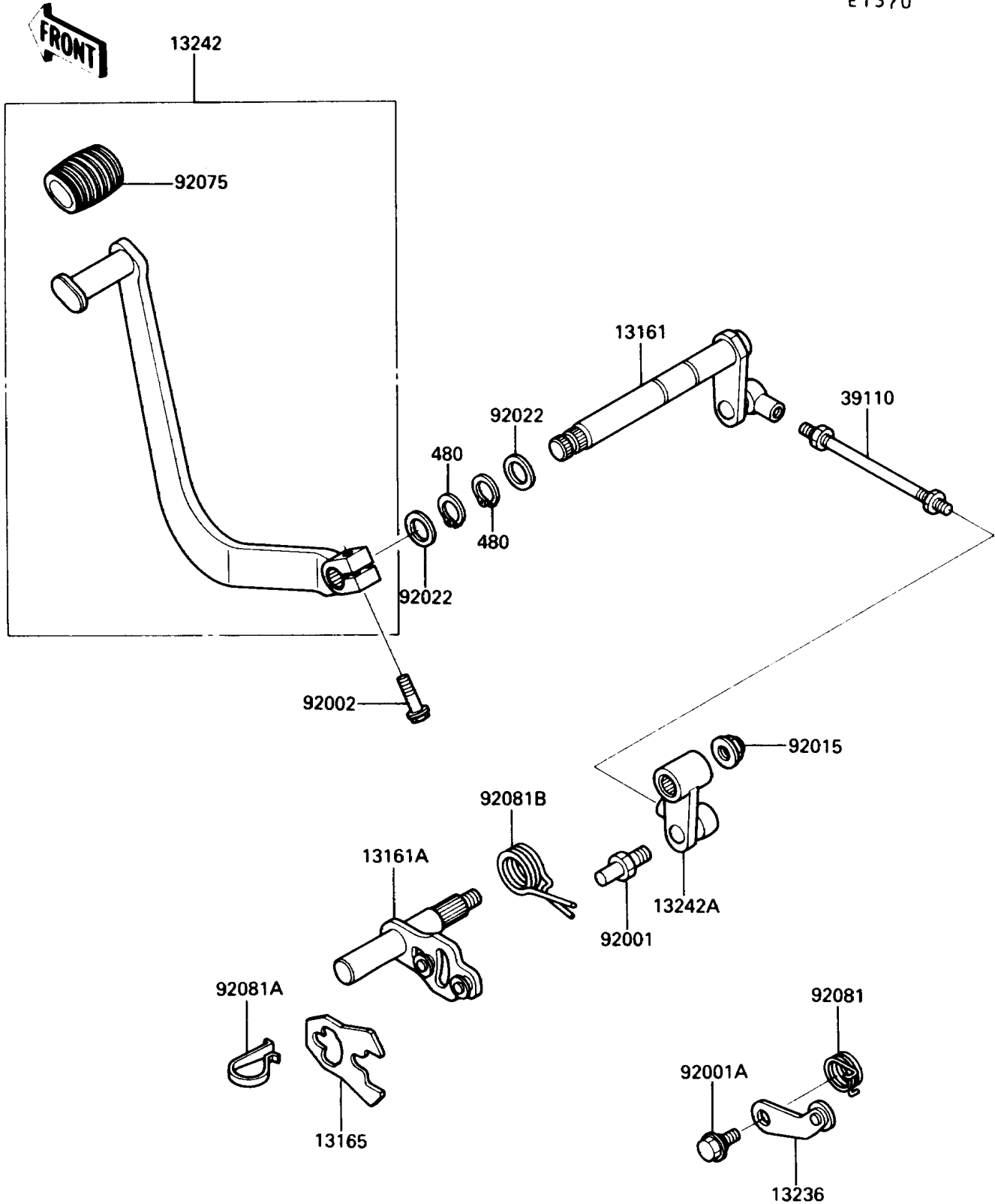


# 1993 Vulcan 750 PARTS DIAGRAM

Gear Change Mechanism

E1370



# 1993 Vulcan 750 PARTS LIST

## Gear Change Mechanism

ITEM NAME	PART NUMBER	QUANTITY
CIRCLIP-TYPE-C,13MM (Ref # 480)	480J1300	2
LEVER-COMP-CHANGE SHAFT (Ref # 13161)	13161-1119	1
LEVER-COMP-CHANGE SHAFT (Ref # 13161A)	13161-1120	1
PAWL (Ref # 13165)	13165-1120	1
LEVER-COMP,POSITION (Ref # 13236)	13236-1126	1
LEVER-ASSY-CHANGE,PEDAL (Ref # 13242)	13242-1185	1
LEVER-ASSY-CHANGE (Ref # 13242A)	13242-1188	1
ROD-ASSY-TIE (Ref # 39110)	39110-1073	1
BOLT,RETURN SPRING (Ref # 92001)	92001-1455	1
BOLT,GEAR CHANGE LEVER (Ref # 92001A)	92001-1715	1
BOLT,6X20 (Ref # 92002)	92002-1237	1
NUT,FLANGED,8MM (Ref # 92015)	92015-1397	1
WASHER,13.2X20X0.5 (Ref # 92022)	92022-1224	2
DAMPER,CHANGE PEDAL (Ref # 92075)	92075-1585	1
SPRING,RETURN (Ref # 92081)	92081-1777	1
SPRING,CHANGE LEVER (Ref # 92081A)	92081-1829	1
SPRING,CHANGE PEDAL RETURN (Ref # 92081B)	92081-1869	1