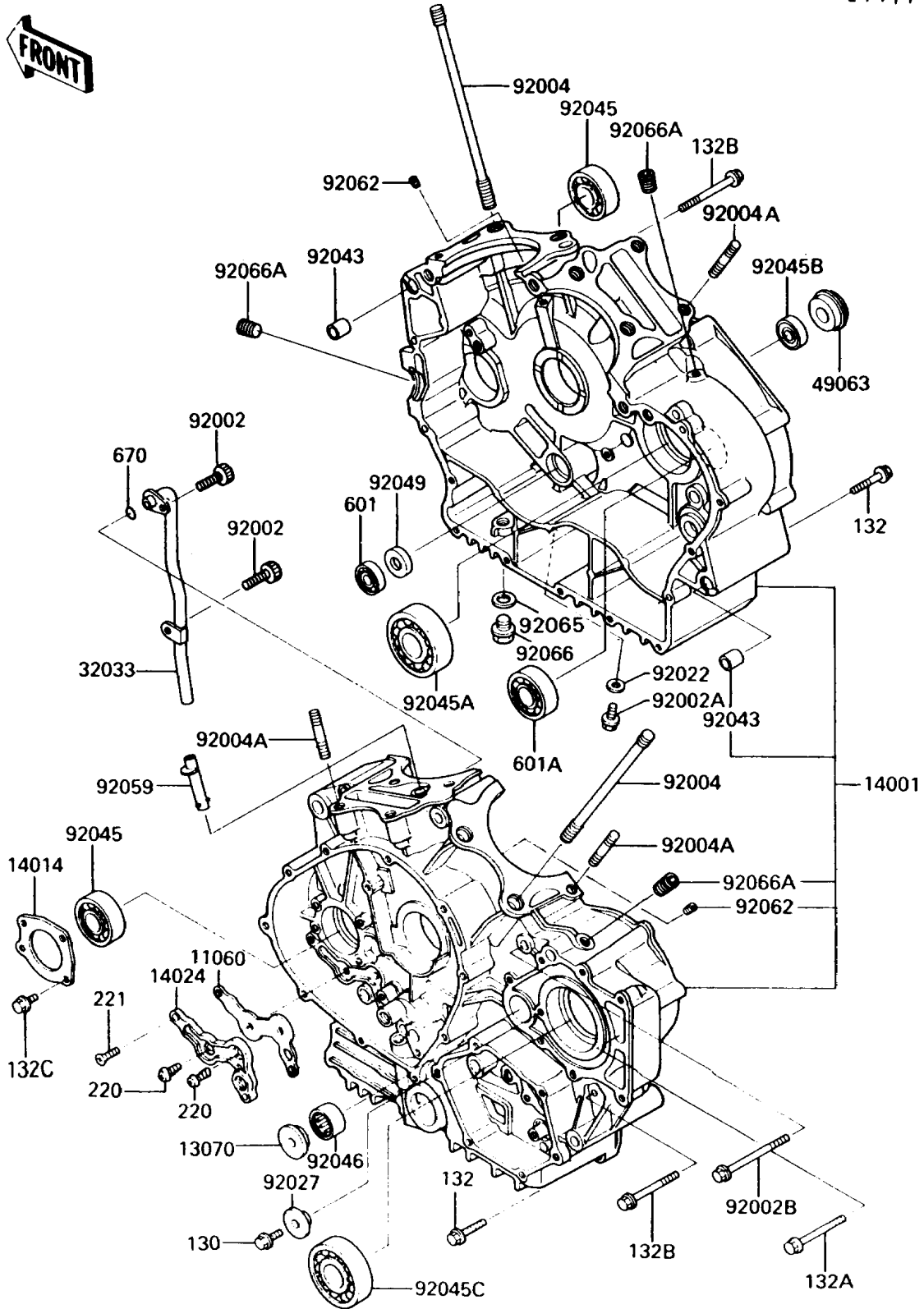


1991 Vulcan 750 PARTS DIAGRAM

Crankcase

E1411



1991 Vulcan 750 PARTS LIST

Crankcase

| ITEM NAME | PART NUMBER | QUANTITY |
|--------------------------------------|-------------|----------|
| BOLT-FLANGED (Ref # 130) | 130P0616 | 1 |
| BOLT-FLANGED-SMALL (Ref # 132) | 132E0630 | 8 |
| BOLT-FLANGED-SMALL (Ref # 132A) | 132E0640 | 1 |
| BOLT-FLANGED-SMALL (Ref # 132B) | 132E0660 | 3 |
| BOLT-FLANGED-SMALL (Ref # 132C) | 132G0616 | 4 |
| SCREW-PAN-CROS,6X16 (Ref # 220) | 220B0616 | 2 |
| SCREW-CSK-CROS,6X20 (Ref # 221) | 221B0620 | 1 |
| BEARING-BALL (Ref # 601) | 601A6001 | 1 |
| BEARING-BALL (Ref # 601A) | 601A6204Z | 1 |
| O RING,8MM (Ref # 670) | 670B1508 | 1 |
| GASKET,OIL LINE COVER (Ref # 11060) | 11060-1087 | 1 |
| GUIDE (Ref # 13070) | 13070-1127 | 1 |
| SET-CRANKCASE (Ref # 14001) | 14001-5205 | 1 |
| PLATE-POSITION (Ref # 14014) | 14014-1068 | 1 |
| COVER,OIL LINE (Ref # 14024) | 14024-1074 | 1 |
| PIPE,BREATHER (Ref # 32033) | 32033-1649 | 1 |
| SEAL-MECHANICAL (Ref # 49063) | 49063-1052 | 1 |
| BOLT,SOCKET,6X14 (Ref # 92002) | 92002-1592 | 2 |
| BOLT,6X10 (Ref # 92002A) | 92002-1628 | 1 |
| BOLT,10X80 (Ref # 92002B) | 92002-1629 | 3 |
| STUD,10X163 (Ref # 92004) | 92004-1140 | 8 |
| STUD,8X28.5 (Ref # 92004A) | 92004-1142 | 6 |
| WASHER,6.1X12X1 (Ref # 92022) | 92022-077 | 1 |
| COLLAR (Ref # 92027) | 92027-1844 | 1 |
| PIN,11X14X12.3 (Ref # 92043) | 92043-1266 | 2 |
| BEARING-BALL,TMB204 JR (Ref # 92045) | 92045-1041 | 2 |
| BEARING-BALL,TMB305 (Ref # 92045A) | 92045-1137 | 1 |
| BEARING-BALL,6001LLU (Ref # 92045B) | 92045-1151 | 1 |
| BEARING-BALL,TMB305X3 (Ref # 92045C) | 92045-1167 | 1 |

1991 Vulcan 750 PARTS LIST

Crankcase

| ITEM NAME | PART NUMBER | QUANTITY |
|---|-------------|----------|
| BEARING-NEEDLE, HK2016 (Ref # 92046) | 92046-1054 | 1 |
| SEAL-OIL, AC037AE0 (Ref # 92049) | 92049-1228 | 1 |
| TUBE (Ref # 92059) | 92059-1620 | 1 |
| NOZZLE, BLACK (Ref # 92062) | 92062-011 | 4 |
| GASKET, 12X22X2, DRAIN PLUG (Ref # 92065) | 92065-097 | 1 |
| PLUG, OIL DRAIN, 12X15 (Ref # 92066) | 92066-1174 | 1 |
| PLUG, OIL LINE, 1/8X7 (Ref # 92066A) | 92066-1227 | 4 |